



ISO 9001, 14001, 18001  
CERTIFIED

# VISHAL PIPES LTD.

## **FABRICATION**

HEAVY STEEL FABRICATION  
STEEL STRUCTURES  
STEEL POLES

## **MANUFACTURER**

POLYOLEFIN PIPES & FITTINGS  
PVC PIPES & FITTINGS  
STEEL TUBES & PIPES  
LED LIGHTS

# LOCATIONS



## VISION

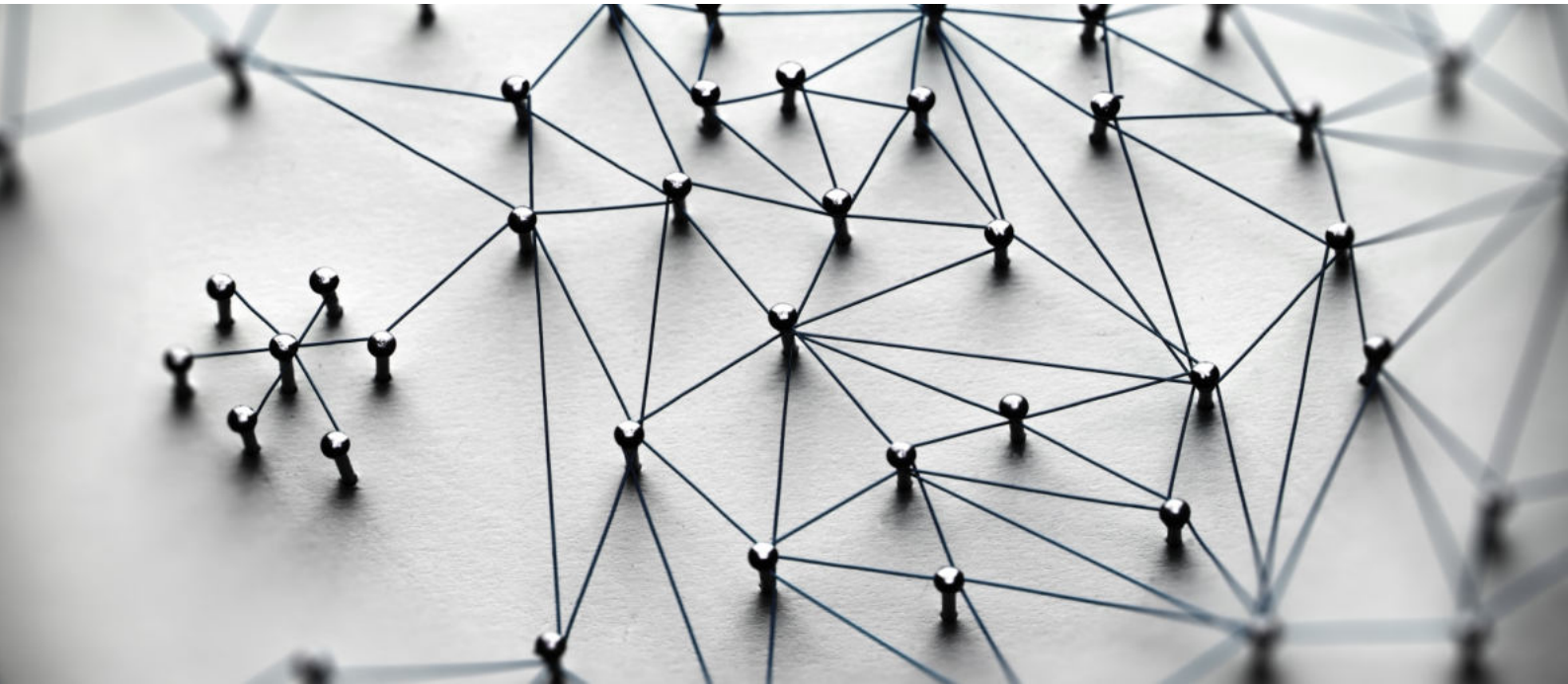
---

- To continuously improve quality of products.
- To keep on increasing the productivity and introducing new products.
- To utilize best practices in processes and technologies.

## MISSION

---

To accomplish our vision through decency, innovation, worldwide span, ethical values & business morals.



## QUALITY POLICY

---

We are committed to total customer satisfaction which shall be achieved by providing cost effective quality products with timely delivery.

## ENVIRONMENTAL POLICY

---

- Meet applicable requirements related to environmental aspects on an ongoing basis with an aim to improve environment.
- Strive for prevention of pollution through continual improvement of process, technology and equipment, wherever applicable.
- Set and review environmental objectives and targets.
- Promote conservation of resources.

## HEALTH & SAFETY POLICY

---

- Ensure healthy and safe working environment of employees through continuous monitoring and controlling workplace hazards by adopting appropriate technology and best management practices.
- Strive for continual improvement in Occupational Health & Safety (OH&S) performance by enhancing awareness, skill and competence of employees and contractors so as to enable them to demonstrate their involvement, responsibility and accountability towards the same.
- Comply with applicable OH&S and other requirements on an ongoing basis.
- Set and review OH&S objective and targets.
- The OH&S Policy will be reviewed for continuing suitability.

# CONTENT

**01** CHAIRMAN'S MESSAGE

**02** PRODUCT LIST

**05** CLIENTS

**06** CERTIFICATIONS

**10** APPROVALS

**15** HEAVY STEEL FABRICATION

**20** STEEL STRUCTURE

**34** STEEL POLES

**39** POLYOLEFIN PIPES & FITTINGS

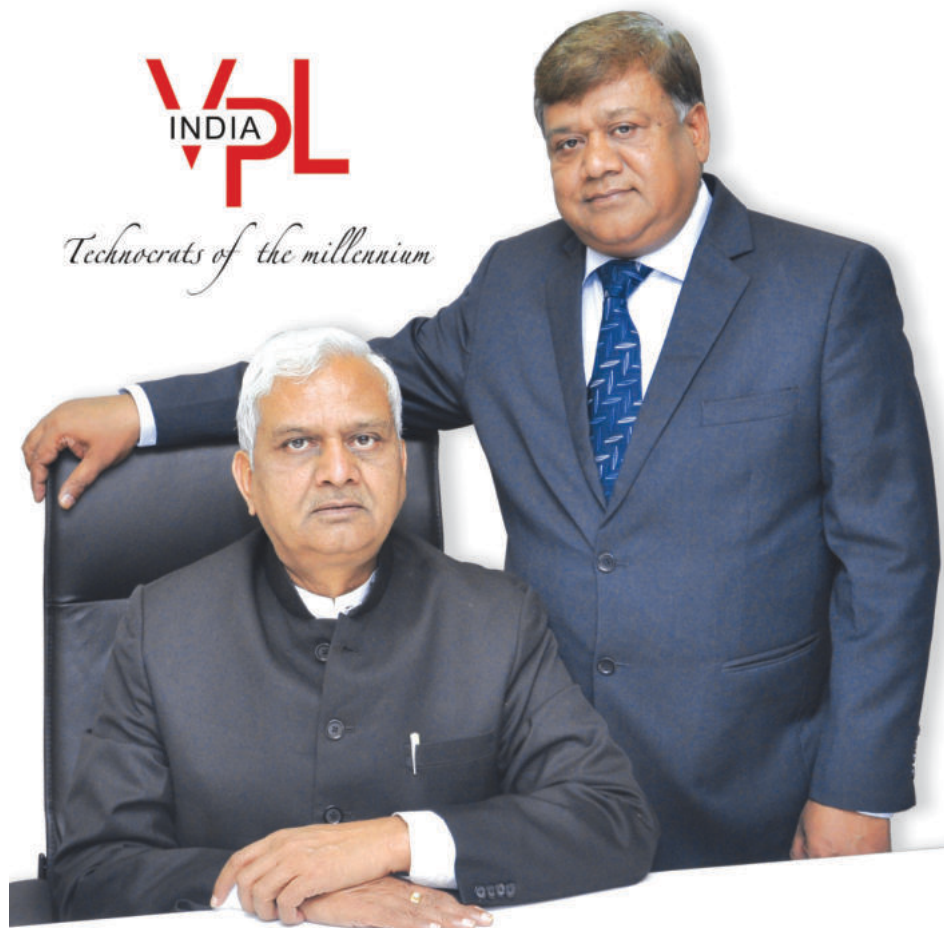
**51** PVC PIPES & FITTINGS

**69** STEEL TUBES & PIPES

**83** LED LIGHTS

**86** EXPORTS





**RADHEY SHYAM AGARWAL**  
**CHAIRMAN**

**NIRMAL AGARWAL**  
**DIRECTOR**

Incorporated in 1988, Vishal Pipes Ltd. is leading manufacturer of Steel Pipes & Tubes, Steel Poles, Steel Structure (medium to heavy fabrication) and Polymer pipes - UPVC, CPVC, HDPE & MDPE Pipes. Within India, we have a strong presence and have expanded globally too.

Headquartered in New Delhi, with an integrated manufacturing units spread over 2,20,000 square meters at Sikandrabad in Greater Noida (Part-II) in state of Uttar Pradesh. The units are certified for ISO 9001, ISO 14001, ISO 18001 & CE; equipped with state-of-art plant & machinery, quality control lab & equipment, PLC controlled CNC machines, galvanization baths, powder coating, surface preparation & painting facilities.

Behold the world around you. Except for Mother Nature, virtually all thing be it buildings, skyscrapers, automobiles, bridges, railways to metro, flyovers, energy, irrigation, gas distribution, pipeline infrastructure, power distribution, rural electrification and more, have use of pipes, tubes & steel sections in them. No wonder they are the soul of any constructions and industrial infrastructure! Think about aforesaid sectors; think of VISHAL PIPES LTD. where products (Brand `VPL India`) are epitomes of excellence in quality, corroborated by National & International Standards.

We believe in pioneering changes to cater to an ever-evolving economy by infusing superior cutting edge technology and innovation. The company has multiplied its growth by introducing new products, improving quality and increasing productivity bench marking the entire product line and eventually gaining the mind space of a large number of customers. Adherence to high quality and timely delivery are our USPs.

We give proper attention to ethical issues like promoting conduct based on integrity, accommodating diversity, empathetic decision-making, compliance and governance consistent with company's core values.

We, thank our valuable clients, vendors and other stake holders for their ardent support.

Assuring of our best services at all times.

Best Regards,  
Radhey Shyam Agarwal  
Chairman

## STEEL STRUCTURE & POLES

### HEAVY STEEL FABRICATION

SPECIFICATION	
RDSO	Composite Steel Plate Bridge
RDSO	Open Web Bridge
RDSO	Bow String Bridge
Railway	Steel Channel Sleepers

### STEEL STRUCTURE

SPECIFICATION	
RDSO Specn	Structure for Overhead Railway Electrification
Customised	Metal Beam Crash Barrier for Highways
Customised	Solar Module Mounting Structure
Customised	Pipe & Lattice Structure for Power Sub-stations
Customised	Telecom Towers (GBT, RTT, RTP)
Customised	Pre-engineered Buildings (PEBs)
Customised	Pre-fabricated Items for Rural Electrification
Customised	Support Structure for Power Plants
IS: 15500	Handpump for Water Wells

### STEEL POLES

SPECIFICATION	
IS: 2713	Swaged tubular pole for Overhead powerlines
Customised	Street Lighting
Customised	Pole for Aerial OFC.

#### NOTES :

We can also fabricate steel structure **AS PER CLIENTS DESIGN AND DRAWINGS.**

We can supply aforesaid structure in **BLACK, GALVANIZED, METALIZED & PAINTED FORM.**

We also undertake **ERECTION** of metal beam crash barrier, PEBs & bridges.

## POLYOLEFIN PIPES & FITTINGS

### HDPE PIPE & FITTINGS

SPECIFICATION	
IS : 4984	Potable Water Supply
IS : 14333	Sewerage
IS: 14151	Sprinkler Irrigation System
ISO 4427	Water supply, drainage and sewage
DoT/ RDSO Specn	PLB HDPE Duct for Optical Fibre Cable

### MDPE PIPE & FITTINGS

SPECIFICATION	
IS: 14885	Conveyance of gaseous fuels
ISO 4427	Water distribution in houses
ISO 4437	Conveyance of gaseous fuels

### PPR PIPES & FITTINGS

SPECIFICATION	
IS: 15801	Conveyance of hot and cold water supplies

## PVC PIPES & FITTINGS

### UPVC PIPE & FITTINGS

SPECIFICATION	
IS:4985	Potable Water Supply
IS:12818	Borewell / Tubewell (Casing)
ASTM D-1785	Plumbing
Customized	Column pipes for borewell application
IS:15328	Drainage & Sewerage
IS:13592	Soil, Waste & Rainwater
IS:9537 (Part-3)	Conduits for cable covering
BS 4514	Soil and ventilating pipes, fittings & accessories
DIN 4925 - 1	Well screens and casings for tubewells
DIN 8061	Cold and hot water supply

### CPVC PIPE & FITTINGS

SPECIFICATION	
IS: 15778	For potable hot and cold water distribution.
A 2846	For potable hot and cold water distribution.

## PRODUCTS - STEEL PIPE & TUBE

### STEEL TUBE, PIPE & FITTINGS

SPECIFICATION	
IS 1239	Water, Air & Non Hazardous Gas & Steam Lines
IS 3589	Water & Sewage transportation
IS 4270	Water wells (Casing pipes)
IS 9295	Idlers belt conveyors
IS 11722	Water Transportation, also suitable with Victaulic coupling
IS 1161	Structural purpose
IS 4923	Hollow Steel Sections for structural use - Rectangular (RHS) & Square (SHS)
IS 9537 (Part-2)	Conduits for cable covering
IS 1239 & IS 13871	Powder coated GI pipes for city gas distribution
RDSO / ETI / OHE / 11	To support catenary wires in overhead railway electrification
EN 10219	Cold formed welded structural hollow sections of non-alloy steels
EN 10255	Non-alloy steel tube suitable for welding and threading
A53 / A53 M	Pipe steel black& hot dipped, zinc coated, welded
A252	Welded steel pipe piles
A500 / A500M	Cold formed welded carbon steel structural tubing in rounds and shapes
A513 / A513M	ERW carbon and alloy steel mechanical tubing
A795 / A795M	Black & hot dipped zinc coated (galvanized) welded steel pipes for fire protection
AS / NZS 1163	Cold formed structural steel hollow sections
AS / NZS 61386	Conduit systems for cable management
AS 1074	Steel tubes and tubular for ordinary service
EN 10217	ERW non alloy steel tubes with specified room temperature properties

**Note :** We can supply above products in **BLACK, GALVANIZED, PAINTED & POWDER COATED FORM.**

## PRODUCTS - LED LIGHTS Mfd. by BR Green Industries Pvt. Ltd.

LED BULB	LED TUBELIGHT
LED CONCEAL DOWN LIGHT	LED FLOOD LIGHT
LED RECHARGEABLE BULB	LED STREET LIGHT
LED HIGH WATTAGE BULB	SOLAR LED STREET LIGHT

## OUR CLIENTS



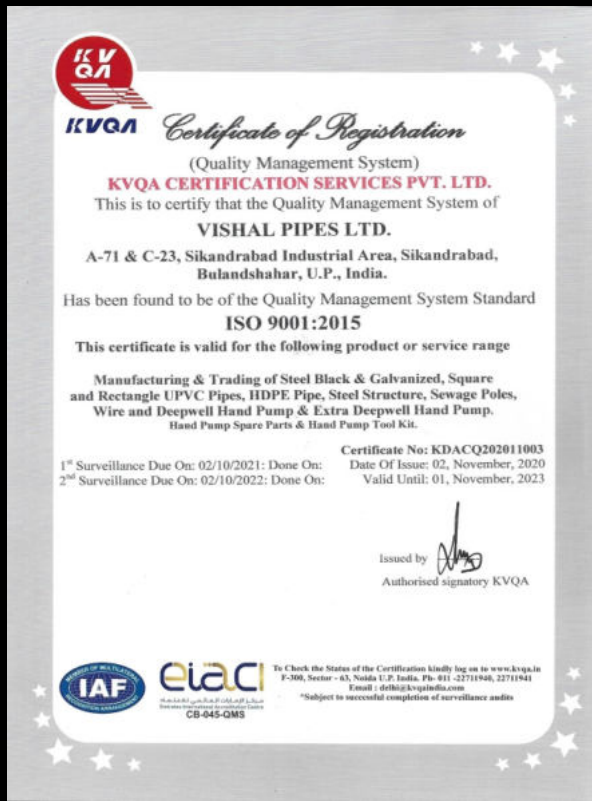
UTTAR PRADESH POWER CORPORATION LTD.



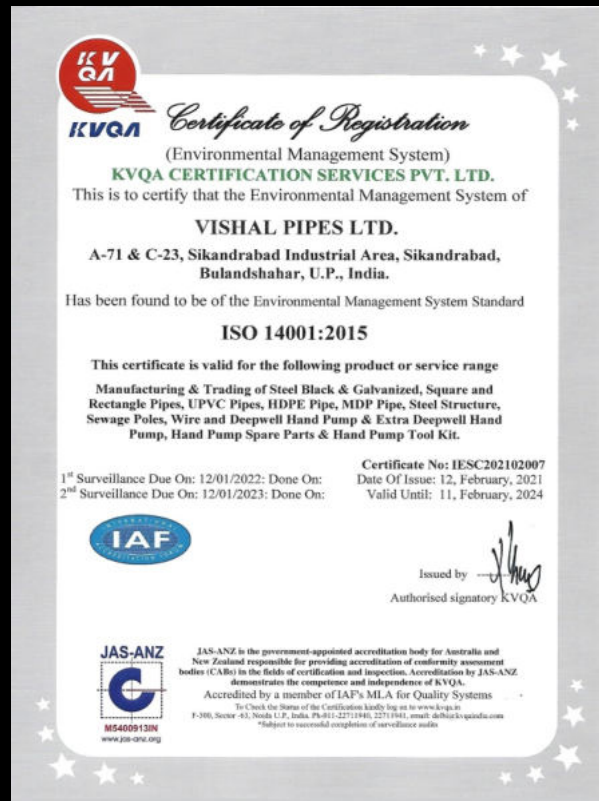


## CERTIFICATIONS

Our relentless pursuit and quest for success is unmatched. Many Such international accreditations and certifications have been awarded to Vishal Pipes Ltd. from governing bodies for meeting quality standards.



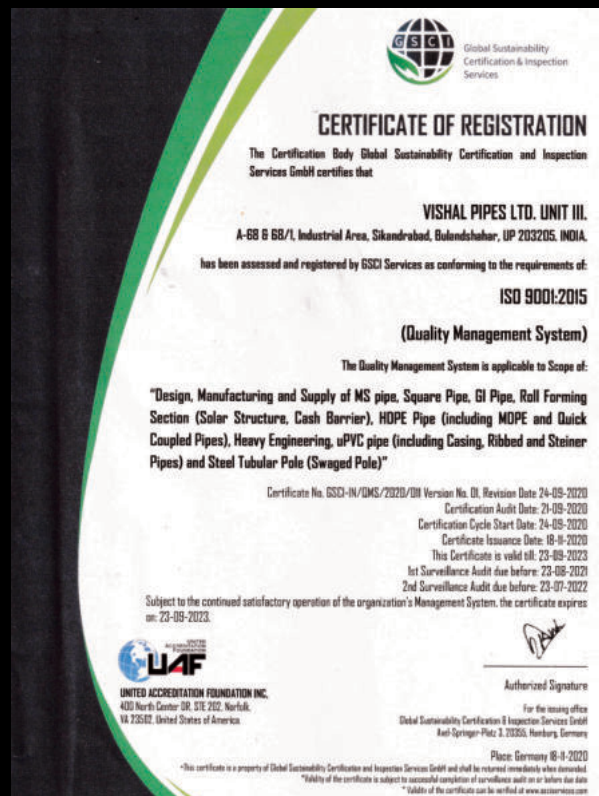
ISO 9001 Certificate



ISO 14001 Certificate



ISO 18001 Certificate



ISO 9001 Certificate

**DNV-GL**

## CERTIFICATE OF FACTORY PRODUCTION CONTROL

Certificate No.: 10000345005-PA-DNV-GL-IND Rev.0.0 Initial certification date: 2013-11-12 Valid: 2023-01-26

This certificate consists of 2 pages

This is to certify that

That the product(s)

**Non-alloy Steel Tubes suitable for Welding and Threading**

Manufactured by

**Vishal Pipes Limited**  
A-71 & C-23, Sikandrabad Industrial Area, Sikandrabad, Distt: Bulandshahr, U.P, India

has on a voluntary basis been assessed with respect to the conformity assessment procedure "Factory Production Control" as described in EN 10255:2004+A1:2007 annex ZA Clause 12.3 of the standard on structural steel, as amended and found to comply.

**Applications/Limitations**  
In compliance with the Construction Product Regulation 305/2011, CE marking and provide Declaration of Performance and Attestation procedure Aoc 3, which is described in the Standard EN 10255:2004 +A1:2007 according to the Annex ZA; Initial Type Testing (ITT) Clause 12.2 shall meet the requirements and compliance of the same rests under responsibility of the Manufacturer.

This certificate remains valid during a three year period as long as the conditions laid down in the harmonised technical specification in reference to the manufacturing conditions in the factory or the factory production control itself are not modified significantly. The product liability rests with the manufacturer or his representative

Place and date:  
Ahmedabad, 03 June 2020

For the issuing office:  
**DNV GL Business Assurance India Pvt. Ltd.**  
  
**Manoj Kumar Panchal**  
Head of Section, Project Manager  
Product Assurance

The Certificate is subject to terms and conditions overleaf. Any significant change in design or construction may render this Certificate invalid. Except for any liability caused by DNV GL's gross negligence or willful misconduct, DNV GL's maximum cumulative liability arising out of or related to the use of or reliance on this document shall be limited under no circumstances exceed the amount of the fee.

DNV GL BUSINESS ASSURANCE INDIA PVT LTD, ROOM: 10 00T Road, Chennai - 600 016, India, TEL:INT: +91 44 43980800

Page 1 of 2

## CE - Certificate EN 10255:2004 + A1:2007

**DNV-GL**

## CERTIFICATE OF CONFORMITY OF THE FACTORY PRODUCTION CONTROL

Certificate No.: 10000403053-PA-RUB-IND Rev. (0.0) Initial certification date: [Initial Issued Date (2014-07-21)] Validity end date: [Validity End Date (2023-07-21)]

In compliance with Regulation (EU) No 305/2011 of the European Parliament and of the Council of 9 March 2011, this certificate applies to the construction product(s)

**Cold formed welded structural hollow sections of non-alloy steels**

to be used in metal structures or in composite metal and concrete structures

placed on the market under the name or trademark of

**VISHAL PIPES LIMITED**  
A-71 & C23 SIKANDRABAD INDUSTRIAL AREA, DISTT. BULANDSHAHAR, U.P, INDIA

and produced in the manufacturing plant(s)

**VISHAL PIPES LIMITED**  
A-71 & C23 SIKANDRABAD INDUSTRIAL AREA, DISTT. BULANDSHAHAR, U.P, INDIA

This certificate attests that all provisions concerning the assessment and verification of constancy of performance described in Annex ZA of the standard(s)

**EN 10219-1:2006**  
under system 2+ are applied and that

**THE FACTORY PRODUCTION CONTROL IS ASSESSED TO BE IN CONFORMITY WITH THE APPLICABLE REQUIREMENTS.**

This certificate will remain valid until the validity end date as long as neither the harmonised standard, the construction product, the AVCP methods nor the manufacturing conditions in the plant are modified significantly, unless suspended or withdrawn by the notified factory production control certification body. For more details see Appendix accompanying this Certificate.

Place and date:  
Barendrecht, 2021-01-27

  
**PRODUCTS**  
**RVA C 312**

For the Notified Body 2388:  
**DNV GL Business Assurance B.V.**  
  
**Rijkman**  
Management Representative

Less of fulfillment of conditions as set out in the Certification Agreement may render this Certificate invalid.

1000000710-1007 200 GL Business Assurance B.V., Deventerweg 1, 3994 AB, Barendrecht (Barendrecht) Tel.: +31 (0) 14 2620000, www.dnv-gl.com/certification

Page 1 of 1

## CE - Certificate EN 10219-1:2006

**DNV-GL**

Certificate number :- 10000345005-PA-DNV-GL-IND Rev.0.0  
Project number :- PRC-473633-2013-PRC-IND

**Certificate history**

Revision	Description	Issue date
00	Original certificate	2013-11-12
01	Re-certification	2017-02-06
00	Re-certification - Certificate number changed in NGPS project migration	2020-04-30

**Products covered by this Certificate**

Product description	Product Type	Category	Applied standard
Non Alloy Steel Tubes for welding & Threading (Black & Galvanized) Type L1, L2, M & H; Material grade: Steel Name S195T and Steel Number 1.0035 Size: 21.3 MM OD to 165.1 mm OD ; for series M & H Size: 21.3 MM OD to 114.3 mm OD ; for series L1 & L2 Wall Thickness: Specified as per Type L1, L2, M & H in the standard	Non alloy steel tubes suitable for welding and threading	Voluntary Scheme	EN 10255:2004 + A1:2007

**Sites covered by this Certificate**

Manufacturer	
Vishal Pipes Limited	A-71 & C-23 Sikandrabad Industrial Area, Sikandrabad, Distt: Bulandshahr, U.P, India

**Terms and conditions**  
The certificate valid is subject to the following terms and conditions:  

- Any producer/Manufacturer (see 2001/95/EC for a precise definition) is liable for damage caused by a defect in his product(s), in accordance with directive 85/374/EEC, as amended, concerning liability of defective products.
- The certificate is only valid for the products and/or manufacturing premises listed above.
- The Manufacturer shall fulfil the obligations arising out of the quality system as approved and uphold it so that it remains adequate and efficient.
- The assessment scope of this certificate excludes Initial Type Testing and other condition as in the Application / Limitation. The Initial Type Testing (ITT) by Notified laboratory as described in the Standard shall be met which is under the responsibility of a manufacturer.
- The Manufacturer shall inform the local DNV GL Office of any intended updating of the quality system and DNVGL will assess the changes and decide if the certificate remains valid.
- Periodical audits will be held, in order to verify that the Manufacturer maintains and applies the quality system DNVGL reserves the right, on a spot basis or based on suspicion, to pay unannounced visits.

The following may render this Statement Invalid:  

- Changes in the quality system affecting production.
- Periodical audits not held within the allowed time window.

**END OF CERTIFICATE**  
This Certificate is subject to terms and conditions overleaf. Any significant change in design or construction may render this Certificate invalid. Except for any liability caused by DNV GL's gross negligence or willful misconduct, DNV GL's maximum cumulative liability arising out of or related to the use of or reliance on this document shall be limited under no circumstances exceed the amount of the fee. Lack of fulfillment of conditions as set out in the Certification Agreement may render this Certificate invalid.

DNV GL BUSINESS ASSURANCE INDIA PVT LTD, ROOM: 10 00T Road, Chennai - 600 016, India, TEL:INT: +91 44 43980800

Page 2 of 2

**DNV-GL**

Certificate No.: 10000403053-PA-RUB-IND Rev. (0.0)  
Place and date: Barendrecht, 2021-01-27

### Appendix to Certificate

**Certificate history**

Revision	Description	Issued date
0.0	Original Certificate	2014-07-21
1.0	Re-certification	2017-08-22
0.0	Re Certification and NOBO change to RvA 2388 This certificate supersedes the certificate 1162-CPR-0760 Rev 1.0	2021-01-27

**Additional information to the scope of certificate**

Harmonized Standard	Steel grade & quality	Shape	Tolerance, Dimensions and Sectional Properties	Thickness mm	Width mm	Ø mm	Black / Galvanized
EN10219-1:2006	S235MR, S275MR, S355MR	Cold formed circular hollow sections (CHS)	EN10219-1:2006	2-5 mm	-	21.30 to 219.1	Black and Galvanized
	S235MR, S275MR, S355MR	Cold formed rectangular hollow sections (RHS)		2-5 mm	25x40 to 200x100	-	Black and Galvanized
	S235MR, S275MR, S355MR	Cold formed square hollow sections (SHS)		2-5 mm	25x20 to 200x200	-	Black and Galvanized

**Declaration of performance and marking of product**  
When meeting with the terms and conditions, as required, the manufacture shall draw up an EC declaration of product performance and legally affix the CE mark followed by the notified factory production control certification body identification number of DNV GL (2388).

**END OF CERTIFICATE**

Less of fulfillment of conditions as set out in the Certification Agreement may render this Certificate invalid.

1000000710-1007 200 GL Business Assurance B.V., Deventerweg 1, 3994 AB, Barendrecht (Barendrecht) Tel.: +31 (0) 14 2620000, www.dnv-gl.com/certification

Page 1 of 1



## CERTIFICATIONS

**Federation of Indian Export Organisations**  
Northern Region  
Niyati Bhawan, Opp. Army Hospital Research & Referral, Rao Tula Ram Marg, New Delhi-110057  
Phone: +91-11-46042222, Fax: +91-11-26148194  
Email: feonr@feo.org, Website: http://www.feo.org

File No.: FIEONR/795/2015-2016/312

Dated: 17-04-2019  
By Rego/Courier

M/s. VISHAL PIPES LIMITED  
32 NISHANT KUNJ 1ST FLOOR KOHAT ENCLAVE PITAMPURA,  
NEW DELHI-110034  
Delhi  
Phone 91-11-46205620

Dear Sir,

Sub: Membership of FIEO and Registration under the Foreign Trade Policy  
RCMC No: NR/312/2015-2016 and valid upto 31/03/2020

We have pleasure in forwarding herewith your RCMC in original duly renewed/amended. Kindly acknowledge receipt. Please send us a request for endorsement of status as an One Star Export House/Two Star Export House/Three Star Export House/Four Star Export House/Five Star Export House as and when renewed/granted by office of DGFT along with copy of the certificate.

Please ensure to submit regularly your "Quarterly Export Return" even if it is 'Nil' within 15 days of the close of quarter and "Annual Export Return". You are also required to submit your annual detailed scheme and action plan for exports every year on our prescribed format in compliance of the conditions of Membership of FIEO and registration under the Foreign Trade Policy provisions.

Please note that renewal of your membership and the registration is subject to annual membership subscription before expiry of three months from the commencement of the year to which it relates, i.e. by 30th June as laid down at Rule No. 6(iii) of the Rules and Regulation of FIEO under the Memorandum and Articles of Association. Therefore, please ensure that you remit your Annual Membership Subscription every year by 30th June.

Thanking You,

Yours faithfully,  
Federation of Indian Export Organisations  
Assistant Director

Encl: as above

Note: As per Foreign Trade Policy Provisions in force, the registered exporter is under obligation to intimate the change in constitution, address, etc. to the registering authority (FIEO) within 30 days of such change. The registering authority may condone the delay on merit in case of genuine hardships. In view of the above, you are advised to intimate us immediately as and when any change such as Directors/Partners/Address, Telephone, Fax, Email id, etc. takes place to enable us to serve you better.

FIEO Membership

Application Status Page 1 of 3

भारत सरकार/Government of India  
वणिज्य एवं उद्योग मंत्रालय/Ministry of Commerce & Industry  
व्यापार विभाग/Department of Commerce  
OFFICE OF ZONAL DIRECTOR GENERAL OF FOREIGN TRADE  
मंडलीय संयुक्त मंडलीय विदेश व्यापार का कार्यालय  
CENTRAL LICENSING AREA, 'A' WING NEW DELHI-110002

सेवा में/To,

श्रीमती/M/s. VISHAL PIPES LTD.,  
32, NISHANT KUNJ, 1ST FLOOR,  
KOHAT ENCLAVE  
NEW DELHI  
NEW DELHI DELHI 110034

विषय- आयातक-निर्यातक कोड संख्या आवंटन (Allotment of Importer-Exporter Code Number).

प्रिय महोदय/Dear Gentleman,

आपके आवंटन पर के संदर्भ में आपको आयातक-निर्यातक कोड संख्या [0598017437] आवंटित किया जा रहा है। कृपया इसकी अपनी तरफ जाँच लें। अगर इसमें कोई त्रुटि पाई जाती है तो उसे तत्पश्चात इस कार्यालय के ध्यान में लाया जाए।

With reference to your application you have been allotted Importer-Exporter Code No [0598017437]. Please check it properly. If there is any discrepancy, it may be brought to the notice of this office immediately.

कृपया पकड़ें। (Please acknowledge receipt.)

आपकी/Your faithfully

संलग्न: बंधोपरी।  
Enclosure: As above

स्थान: New Delhi  
दिनांक: Date 25.11.2015

(B.P.Meena)  
विदेश व्यापार विकास अधिकारी/Foreign Trade Development Officer

http://164.100.78.104:9090/dftcc/ApplicationStatusDetails.jsp?docCode=HTM/PIECL/1.01 01-Dec-15

Importer Exporter Code No.

भारत सरकार  
GOVERNMENT OF INDIA  
वाणिज्य एवं उद्योग मंत्रालय  
MINISTRY OF COMMERCE & INDUSTRY  
विदेश व्यापार महानिदेशालय  
DIRECTORATE GENERAL OF FOREIGN TRADE  
मान्यता प्रमाण पत्र  
Certificate of Recognition  
एक सितारा निर्यात सदन  
ONE STAR EXPORT HOUSE

मैसर्स

(आई ई सी और आयकर पैन)

को विदेश व्यापार नीति, 2015-2020 के प्रावधानों के अनुसार एक सितारा निर्यात सदन का स्तर प्रदान किया जाता है। यह प्रमाण पत्र, प्रक्रिया पुस्तक (2015-2020) के पैरा 3.20 (बी) में दी गयी शर्तों के निहित वर्षों की अवधि के लिए दिनांक से तक वैध होगा।

M/s. VISHAL PIPES LTD., 32, NISHANT KUNJ, 1ST FLOOR  
KOHAT ENCLAVE NEW DELHI-110034

(IEC 0598017437 and Income Tax PAN AAAGY3101K)

are hereby accorded the status of One Star Export House in accordance with the provisions of the Foreign Trade Policy, 2015-2020. This Certificate is valid for a period of FIVE years effective from 30.01.2016 to 29.01.2021 subject to the conditions prescribed in Para 3.20(b) of the Handbook of Procedures (2015-2020).

सं./No. A/ 2009

तारीख/Date 04.02.2016

स्थान/Place: NEW DELHI

05/21/58/80054/AMT6/1WB

(फाइल सं./File No.) तारीख/Date 30.01.2016

अपर/संयुक्त/उप महानिदेशक  
विदेश व्यापार/विकास आयुक्त (एआईडीडी)  
Additional Joint/Deputy  
Director General of Foreign Trade/  
Development Commissioner (S&E)

Star Export House Certificate



## BIS CERTIFICATION MARK

Bureau of Indian standards has given us the BIS certification mark license to use the standard mark on steel pipes & tubes, steel poles, deep well hand pump & polymer pipes for the following specifications.

IS 1239	IS 4270	IS 4984
IS 3589	IS 15500	IS 14333
IS 1161	IS 4985	IS 14151
IS 4923	IS 15328	IS 14885
IS 9295	IS 13592	IS 15778
IS 9537	IS 12818	
IS 2713	IS 10124	



## CE CERTIFICATION MARK

CE marking used on cold formed welded structural hollow section & steel tube suitable for welding and threading of non alloy steel.

EN 10219 - 1 : 2006  
EN 10255 : 2004 + A1 : 2007



## INSPECTION OF MATERIAL

**Third party inspection (TPI) agencies who inspects our products are given below :**

- Certification Engineers International Limited (CEIL)
- Bureau Veritas Quality International (BVQI)
- SGS
- TÜV SÜD
- ABS Industrial Verification
- DNV GL
- Crown Agents India Pvt. Ltd.
- Central Institute of Plastics Engineering & Technology (CIPET)
- WAPCOS Ltd.
- RITES Ltd.
- Research Design & Standard Organisation (RDSO)
- MECON Ltd.
- Central Mine Planning & Design Institute (CMPDIL)
- Indian Register of Shipping
- Meenar Global Consultants LLP
- VCS Quality Services Pvt. Ltd.
- Quality Austria Central Asia.
- IRCLASS Systems and Solutions Pvt. Ltd.
- Elites India Pvt. Ltd.
- PDIL

## APPROVALS

Our relentless pursuit and quest for success is unmatched. Many Such international accreditations and certifications have been awarded to Vishal Pipes Ltd. from governing bodies for meeting quality standards.

**पावरग्रिड**  
POWER GRID CORPORATION OF INDIA LIMITED  
(A Government of India Enterprise)

Ref : CC/QA MI /AA/VA /VPL Date: 24.03.2020

To  
M/s Vishal Pipes Limited  
A - 68 and A - 68/1, INDUSTRIAL AREA,  
SIKANDRABAD, BULAND SHAHAR

**Kind Atten. Sh. Yyemendu Singh**

**SUB:** Vendor approval of M/s Vishal Pipes Limited, Sikandrabad for supplying "HDPE pipe" for POWERGRID projects, valid for a period of one year ie upto 23.03.2021 - regarding

Dear Sir,  
This has reference to your request regarding the above subject matter. Based on the documents submitted by you and subsequent audit of the above manufacturing works, we are agreeable to your request for supplying "HDPE pipe" for POWERGRID projects, from above manufacturing works. This approval shall be valid upto 23.03.2021 ie for a period of one year.

M/s Vishal Pipes Limited, Sikandrabad shall be fully responsible for satisfactory performance of their products. Please note that the items supplied shall meet the requirements of POWERGRID Specifications/ Approved Drawing/ Data Sheets and relevant IEC/IS standards/MQP and project specific type tests. If, at any point of time, any abnormality is noticed in this regard, we reserve the right to increase our involvement by way of additional inspection and/or additional customer inspection points (CIP) at any stage or withdraw this letter with immediate effect.

"The ministry of MSME has launched the "Financial Support to MSMEs in ZED certification scheme" for benefit of MSMEs. You are also requested to avail maximum benefits under the scheme. For more details on ZED, you may please visit this link: <https://zed.org.in/>."

Thanking You,

Yours faithfully,  
(अमरुज अरोड़ा) Amrur Arora  
उप महाप्रबंधक / Dy General Manager  
गुआ एवं पि.पु.इ.ए. / QA&I, Gurgaon

Note: - Letter regarding Non Indulgence in Fraudulent / Unethical Practices attached.

CC: GM IO-Gurgaon

### PGCIL Approval - HDPE Pipes

**पावरग्रिड**  
POWER GRID CORPORATION OF INDIA LIMITED  
(A Government of India Enterprise)

निर्माता अनुमोदन वैधता विस्तार/ MANUFACTURER APPROVAL VALIDITY EXTENSION  
संदर्भ : CQA&I/VA/VPL/EP/08 दिनांक: 01.10.2020

निर्माता का नाम Name of Manufacturer	Vishal Pipes Ltd.
निर्माता का पता Address of Manufacturer	Unit-A: A-71, Industrial Area, Sikandrabad, Bulandshahr, UP Unit-B: A-68, Industrial Area, Sikandrabad, Bulandshahr, UP
निर्माता कोड Manufacturer Code	3000000554
नाम और संपर्क विवरण Name & Contact details	Sh. Vyom, Mob No: 8285001908
वस्तु का नाम Item Name	Galvanized Steel Lighting Poles up to 8 Mts.
पिछले अनुमोदन का संदर्भ Previous approval letter ref. No. & date	CQA&I/VA/VPL dtd 24.07.2019
संचार संदर्भ विवरण Communication reference details	21.09.2020 (Email)
वैधता विस्तार अवधि Validity extended Period up to	30.09.2023

Please note that further approval shall be considered based upon performance, quality and supplies during this approval period. Manufacturer shall ensure that request for renewal of above approval should come at least one month before expiry of this approval letter.

Contractor and Manufacturer shall be fully responsible for satisfactory performance of approved products. Please note that the items supplied shall meet the requirements of POWERGRID Specifications/ Approved Drawing/ Data Sheets/ GTP/MQP, relevant IEC/IS standards and project specific type tests. Manufacturer shall ensure that the above documents are available at the works so that proper inspection is carried out without delay. If, at any point of time, any abnormality is noticed in this regard, we reserve the right to increase our involvement by way of additional inspection and/or additional customer inspection points (CIP) at any stage or withdraw this approval with immediate effect.

**Special Remarks:**  
1. In case, an order is executed for more than 2 years, further extension shall be accorded / considered only after process audit of your works.

Note 1: "The ministry of MSME has launched the "Financial Support to MSMEs in ZED certification scheme" for benefit of MSMEs. MSMEs are requested to avail maximum benefits under the scheme. For more details on ZED, you may please visit this link: <https://zed.org.in/>."

Note 2: Letter regarding Non Indulgence in Fraudulent / Unethical Practices attached.

(Rohitav Bakshi)  
Dy. Manager (QA & I)

प्रति: सम्बंधित निर्देशन कार्यालय  
Enclosure: As above

### PGCIL Approval - Street Lighting Poles

**केन्द्रीय रेल विद्युतीकरण संगठन**  
Central Organisation for Railway Electrification  
1-Nawab Yusuf Road, Civil Lines, Prayagraj (UP)-211001

By Speed Post  
No. ELCORE/ALD/FIT/400 (Vishal) Date : 29.07.2020

M/s Vishal Pipes Ltd  
A-71, Industrial Area Shikhanabad  
Distt-Bulandshahar-203205.

**Sub:** Extension for approval for manufacturing and supply of Galvanized ERW Steel tubes and counter weight guide tube (RI No-5063-1).

**Ref:** (i) This office letter of even no dtd 31.05.2018.  
(ii) Your letter No. VPL/Mktg/CORE/Regn/2020-21/010 dtd 15.06.2020.

1. Reference above, extension of approval of CORE as approved source to your works at **A-71, Industrial Area Shikhanabad, Distt-Bulandshahar-203205**, for manufacturing and supply of following items is hereby granted:

SN	Description	Size	RDSO specification No.
1	Small Tube	3.75 x 28.40	ET/0HE/11 (5/89) & ET/0HE/13 (4/84) with A&C slip no 1 to 4.
2	Standard Tube	38.00 x 25.90	A&C slip no 1 to 4.
3	Large Tube	49.00 x 40.90	A&C slip no 1 to 4.
4	Counter weight Guide tube RI no-5063-1.	25 mm (NB)	IS 1239 and Drawing No. ET/0HE/P/5060-2 (Mod-C) & ET/0HE/13 (4/84) with A&C slip no 1 to 4.

This approval shall be valid from **01.07.2020 to 31.12.2020**.

2. It is to be ensured that the Galvanized ERW Steel tubes and counter weight guide tube (RI No-5063-1) manufactured and tested fully as per Railways approved design/drawings, relevant RDSO Specifications & IS, exercising proper quality control. Also, the galvanization of ferrous part is to be carried out in accordance with RDSO Specification (i.e. ET/0HE/13 (4/84) with A&C Slip No. 1 to 4.

3. It must be ensured that Quarterly Performance Report (QPR) in the enclosed format is submitted to this office, duly countersigned by the inspecting official of M/s RITES/Consignee (in case of consignee inspection only), regularly without fail for the supplies made during the period of approval and a declaration that the supply position shown in the 'QPR' is exclusive list of supply of material duly inspected by RITES/Consignee and no other material got tested/inspected by RITES/Consignee & supplied to the Railways including OHE & TSS contractors and no failure reported from any Zonal Railway during the period of approval underneath the 'QPR' itself. In case of 'Nil' supply and non participation in any tender during the period of approval, this office should be apprised of the reasons thereof.

### Core Approval - GI Tubes for OHE

**केन्द्रीय रेल विद्युतीकरण संगठन**  
Central Organisation for Railway Electrification  
1-Nawab Yusuf Road, Civil Lines, Prayagraj (UP)-211001

By Speed Post  
No. ELCORE/MP/Steel/715 (Vishal Pipe) Date : 30.12.2020

M/s Vishal Pipes Ltd  
32, Nisat Kung, 1<sup>st</sup> Floor kohat Enclave  
Pitampura New Delhi-110034.

**Sub:** Extension of approval as CORE approved vendor for manufacture & supply of fabricated and galvanized steel Structures & SPS for OHE & TSS.

**Ref:** (i) Your letter No. VPL/Mktg/CORE/Regn/2020-21/021 dtd 04.12.2020.  
(ii) This office letter of even no dtd 07.02.2019.

1.0 Reference above, extension of approval of CORE to your works A-71, Industrial Area Sikanderabad Distt- Bulandshahar-203205 (UP) for manufacturing and supply of following items is hereby granted:-

SN	Item	Specification No.
1.	Approved vendor for fabricated & galvanized Steel Structures & small parts steel (SPS) for OHE & TSS.	IS: 2062:2011(Latest) Grade-E 250 (Fe 410 W) Quality 'A' (latest), IS: 808/1989 (latest) & ET/0HE/13 (4/84) with latest amendments & relevant RDSO drawings.

This approval shall be valid from **01.01.2021 to 31.12.2021**.

2. The terms and conditions are as per annexure-1 shall be binding on you. In case of any deviations found, the approval can be cancelled by CORE without assigning any further reason. It shall be necessary for you to remain in touch with CORE website for CORE policy of vendor approval for any new conditions or changes, which shall also be binding on you.

This has approval of competent authority.

Please acknowledge receipt of the letter.  
DA: Annexure-1, QPR format  
(Upendra Kumar)  
Dy Chief Electrical Engineer (MP)  
For CAO/ CORE/Prayagraj.

### Core Approval - OHE Steel Structures

## APPROVALS

**पावरग्रिड**  
POWER GRID CORPORATION OF INDIA LIMITED  
(A Government of India Enterprise)

Ref: C/QA&I/MQP/Estn/VPL Date: 12.05.2020

Vishal Pipes Ltd.,  
A-71, Industrial Area,  
Sikandrabad, Bulandshahr  
U.P.

Subject: Extension of Approval of M/s Vishal Pipes Ltd., Sikandrabad for supply of ERW Pipes and MQP for Pipe Type Sub-station structure for POWERGRID projects.  
Ref: Your email dated 03.05.2020

Dear Sir,

In reference to the aforementioned email, we hereby extend the validity of vendor approval of Vishal Pipes Ltd., Sikandrabad addressed as above for supply of ERW Pipes, as follows, up to 30.04.2023.

- 50 Nb to 200 Nb as per IS 1161 (Yst 210, 240)
- 15 Nb to 150 Nb as per IS 1239

The Manufacturing Quality Plan (MQP no. SPV 311, Rev 01), for Galvanized Pipe Type Sub-station structure for POWERGRID Projects is also hereby extended till 30.04.2023.

Please ensure that material shall meet the requirements of POWERGRID technical specifications, MQP, approved drawing/data sheet of the specific contract and raw material is procured from POWERGRID approved sources. If, at any point of time, any abnormality is noticed in this regard, we reserve the right to withdraw this approval with immediate effect.

Yours faithfully,  
(M. K. Gupta)  
Sr. GM (QA & I)

*"NOTE: The ministry of MSME has launched the 'Financial Support to MSMEs in ZED certification scheme' for benefit of MSMEs. You are also requested to avail maximum benefits under the scheme. For more details on ZED, you may please visit this link- <https://zed.org.in/>."*

पूरे माल को जमा करने के लिए, कृपया 30.04.2023 तक, निम्नलिखित सूचनाओं को ध्यान में रखते हुए, आपका कार्यालय, पावरग्रिड, नई दिल्ली, भारत में भेजें।  
Corporate Office: 'Saksham', Plot No. 2, Sector-28, Gurgaon-122001, Haryana, India. Tel: 0124-2577030-719  
Sikandrabad Office: 'Saksham', Plot No. 2, Sector-28, Gurgaon-122001, Haryana, India. Tel: 0124-2577030-719  
Regd. Office: 'Saksham', Plot No. 2, Sector-28, Gurgaon-122001, Haryana, India. Tel: 0124-2577030-719  
Regd. Office: 'Saksham', Plot No. 2, Sector-28, Gurgaon-122001, Haryana, India. Tel: 0124-2577030-719

### PGCIL Approval - ERW Pipes

**पावरग्रिड**  
POWER GRID CORPORATION OF INDIA LIMITED  
(A Government of India Enterprise)

निर्माता अनुमोदन वैधता विस्तार/ MANUFACTURER APPROVAL VALIDITY EXTENSION  
संदर्भ : C/QA&I/VA/VPL/SSS/06 दिनांक: 30.09.2020

निर्माता का नाम Name of Manufacturer	Vishal Pipes Ltd.
निर्माता का पता Address of Manufacturer	Unit-4, A-71, Industrial Area, Sikandrabad, Bulandshahr, UP
निर्माता कोड Manufacturer Code	3000000554
नाम और संपर्क विवरण Name & Contact details	Sh. Vyom, Mob No: 8285001908
मद का नाम Item Name	Galvanized Lattice & Pipe Type Sub-station Structure up to 765 kV
पिछले अनुमोदन का संदर्भ Previous approval letter ref. No. & date	C/QA&I/VA/VPL.dtd 27.09.2019
संसार संदर्भ विवरण Communication reference details	21.09.2020 (Email)
वैधता विस्तार अवधि Validity extended Period up to	30.09.2023

Please note that further approval shall be considered based upon performance, quality, and supplies during this approval period. Manufacturer shall ensure that request for renewal of above approval should come at least 1 month before expiry of this approval letter.

Contractor and Manufacturer shall be fully responsible for satisfactory performance of approved products. Please note that the items supplied shall meet the requirements of POWERGRID Specifications/ Approved Drawing/ Data Sheets/ GTP/MQP, relevant IEC/IS standards and project specific type tests. Manufacturer shall ensure that the above documents are available at the works so that proper inspection is carried out without delay. If, at any point of time, any abnormality is noticed in this regard, we reserve the right to increase our involvement by way of additional inspection and/or additional customer inspection points (CIP) at any stage or withdraw this approval with immediate effect.

Special Remarks:  
1. In case of no order is executed for more than 2 years, further extension shall be accorded / considered only after process audit of your works.

Note 1: "The ministry of MSME has launched the 'Financial Support to MSMEs in ZED certification scheme' for benefit of MSMEs. MSMEs are requested to avail maximum benefits under the scheme. For more details on ZED, you may please visit this link- <https://zed.org.in/>."

Note 2: Letter regarding Non-Indulgence in Fraudulent / Unethical Practices attached.

(M. K. Gupta)  
Sr. GM (QA & I)

प्रति: सम्बन्धित निरीक्षण कार्यालय  
Enclosure: As above

पूरे माल को जमा करने के लिए, कृपया 30.04.2023 तक, निम्नलिखित सूचनाओं को ध्यान में रखते हुए, आपका कार्यालय, पावरग्रिड, नई दिल्ली, भारत में भेजें।  
Corporate Office: 'Saksham', Plot No. 2, Sector-28, Gurgaon-122001, Haryana, India. Tel: 0124-2577030-719  
Sikandrabad Office: 'Saksham', Plot No. 2, Sector-28, Gurgaon-122001, Haryana, India. Tel: 0124-2577030-719  
Regd. Office: 'Saksham', Plot No. 2, Sector-28, Gurgaon-122001, Haryana, India. Tel: 0124-2577030-719  
Regd. Office: 'Saksham', Plot No. 2, Sector-28, Gurgaon-122001, Haryana, India. Tel: 0124-2577030-719

### PGCIL Approval - Sub Station Structure

**HIMACHAL PRADESH STATE ELECTRICITY BOARD LIMITED**  
"A State Government Undertaking"

NO: HPSEBL/CE (MM)/REGN-VPL/2016-17-6075-6195 Date: 31.7.16

To: M/s Vishal Pipes Ltd.,  
32, Nishant Kunj, 1<sup>st</sup> Floor,  
Kohat Enclave, Pitampura,  
New Delhi-110034

Subject: - REGISTRATION OF VENDORS.

Ref: - Your letter No. VPL/Mktg./HPSEBL/Regn./2016-17 dated 09.06.2016.

With reference to the above, it is to inform you that the HP State Electricity Board Limited has decided to enroll your firm/organization as "Approved" manufacturer of the following item /items under the following conditions for a period of five years w.e.f. 20.07.2016 to 19.07.2021.

(A) **ITEMS:-**

- Swaged Type Steel Tubular Poles.

(B) **CONDITIONS:-**

- The registration is subject to your having studied the general condition of HPSEBL Ltd. for enlistment, as amended from time to time, as supplied to you along with application for registration and you will abide by them in all respects.
- The registration is provisional until your firm executes satisfactorily at least one order of HPSEBL and also subject to the satisfactory report by the inspecting officer.
- The registration is subject to having valid licence or documents related to manufacture/supply of material. Please note that it should be renewed sufficiently in advance before its expiry and the revalidated licence will have to be submitted with the tender documents.
- The registration will not apply to any of your branches/offices.
- The registration on the approved list does not guarantee the award of contracts. However all enquiries/notice inviting tenders will be endorsed to your firm for quoting of rates for the items for which your firm is enlisted.
- If the performance of the equipment/material supplied is found unsatisfactory or if at any time you fail to fulfill the obligations incumbent upon you by contracts entered with the Board, the HPSEBL Ltd. reserves the right to delete your name even before the expiry of renewal period and take other consequential action.

### HPSEB Approval - Steel Poles

7. You should promptly write to this office about any change in your address of office, factory, partnership deed or any Article of Association of your concern and telephone number etc.

8. The registration is valid for a period of 5 years from the date of issue of this letter. From now onwards, you can participate in the tenders invited by any of the offices of HPSEBL under the category of item /items for which your firm /organization is registered. The registration should be got renewed well before the expiry of the validity period failing which your name shall automatically stand removed from the approval list of registered suppliers / manufacturers contractor as the case may be.

9. Enlistment fee for Rs. 50,000/- (Rupees Fifty thousand) only has been deposited by your firm with HPSEBL Ltd., vide DD No. 007741 dated 09.06.2016. The tenderers shall have to deposit earnest money. Out of the total amount payable as earnest money @ 1%, the amount upto 1,00,000/- (1lac) for the works/tendered amount more than Rs 3.00 crore and the amount Rs. 50,000/- (0.50lac) for works/tendered amount less than or equal to Rs 3.00 crore shall be deposited in the shape of demand draft at Shimla in the name of Sc. Accounts Officer (Banking). HPSEBL Ltd, Kumar House, Shimla-4 and the balance amount shall be deposited in the shape of bank Guarantee.

10. No earnest money is required to be paid/Submitted by the local firms which are declared by the Director of Industries, HP Govt. as Small scale Industrial Units and are registered with HPSEBL after depositing a permanent security of Rs. 50,000/- with the Himachal Pradesh State Electricity Board Ltd for the works with tendered amount upto Rs.3.00 Crs. for the tendered amount exceeding Rs.3.00 Crs. the earnest money shall be Rs. 50,000/- plus 1% of the amount in excess of Rs.3.00 Crs.

11. Registration No. CE(MM)-51/2016 allotted in your favour should be quoted in all future correspondence i.e. in quotations/tenders against advertised demand of HPSEBL.

Chief Engineer (MM),  
HPSEBL Ltd., Vidut Bhawan,  
Shimla-4.

Copy forwarded to:-

- All the Chief Engineers in HPSEBL.
- The Executive Director (Personal), HPSEBL, Vidut Bhawan, Shimla-4.
- The Chief Accounts Officers, HPSEBL, Shimla-4.
- The Managing Director, HPSEBL, Shimla-4.
- All Dy. Chief Engineers/ Superintending Engineers/ Addl. Superintending Engineers/ Sr. Executive Engineers in HPSEBL.
- All the Addl. Superintending Engineers/ Sr. Executive Engineers of this office.
- The H.A.-II of this office.

Chief Engineer (MM),  
HPSEBL Ltd., Vidut Bhawan,  
Shimla-4.



भारत सरकार  
Government of India  
संयुक्त प्रशासन (सिटीकरण-3)  
Office of the Chief Engineer (NDZ-III)  
संयुक्त प्रशासन, नया दिल्ली, भारत  
22202, New Delhi, India. E.P. Number: New Delhi-22202  
फोन नं. 011-23105071 Fax नं. 011-23105232  
ईमेल नं.-ndziii@nic.in टि.डी.एल-2873532  
ईमेल आईडी: ndziii@nic.in@nic.in

नया दिल्ली 22/08/2014/ सी.ए. / न.प्र.सं.-3/ 2015 दिनांक 16/04/2019

**ऑफिस MEMORANDUM**

Subject:- Approval of Various ISI Marked product manufactured by Vishal Pipes Ltd. (India) for incorporating in approved brand list of materials.

On the request made by Vishal Pipes Ltd., vide letter No. VPL/MKTG/REGN/2018-19 date: 03.03.2019, Chief Engineer, NDZ-III, CPWD New Delhi has approved following ISI products manufactured by vishal pipes ltd. for incorporating in approved brand list materials in NITS for upcoming works under the jurisdiction for NDZ-III:-

1. GI PIPES/ UPVC PIPE
2. PVC/HDPE PIPES FOR WATER SUPPLY
3. MS/PVC CONDUIT

1. The above approval is for a period of two years from the date of issue of this order. The approval will automatically lapse at the end of this period.
2. SEIs and EEs are required to incorporate the above brands along with the already approved other brands in the 'List of approved Material' in the NIT/IDEs approved by them, in respect of works executed under the jurisdiction of NDZ-III.
3. The approval does not absolve the Executive/Supervisory officers concerned of their responsibility of ensuring systematic checks like quality rates & Performance of the product while procuring/using the same. Shortcomings/Deficiencies of various nature, if observed while in use at site may be brought to the notice of this office.
4. The approval does not make the firm eligible for claiming the right to get the work alone or/also competing manufacturers/tenders/supplies as mentioned in NIT.
5. The performance of the firm/product shall be watched by field unit and report submitted to approving authority for periodical review.

This issue with the approval of CE, NDZ-III

प्रतिनिधि- (सी.ए.ए. ऑफिस)  
संयुक्त प्रशासन (सिटीकरण-3)

1. Vishal Pipes Ltd. (India), 32, Nishant Kunj, 1st Floor, Near Kohat Enclave, Pitampura, New Delhi-110034.

2. संयुक्त प्रशासन (सिटीकरण-3), नया दिल्ली, भारत। ई.ए. नं. 011-23105071, फोन नं. 011-23105232

3. संयुक्त प्रशासन (सिटीकरण-3), नया दिल्ली, भारत। ई.ए. नं. 011-23105071, फोन नं. 011-23105232

4. संयुक्त प्रशासन (सिटीकरण-3), नया दिल्ली, भारत। ई.ए. नं. 011-23105071, फोन नं. 011-23105232



5. संयुक्त प्रशासन (सिटीकरण-3), नया दिल्ली, भारत। ई.ए. नं. 011-23105071, फोन नं. 011-23105232

4/1

संयुक्त प्रशासन (सिटीकरण-3)

Scanned by CamScanner

## CPWD Approval - Steel & Polymer Pipes

	<b>HARYANA VIDYUT PRASARAN NIGAM LTD.</b> Regd. Office Shakti Bhawan, Sector-6, Panchkula Corporate Identity Number: U4010HR1997SGC03683 Website: <a href="http://www.hvpng.gov.in">www.hvpng.gov.in</a> E-mail: <a href="mailto:cemm@hvpng.gov.in">cemm@hvpng.gov.in</a> Tel No. 0172-2583724      Fax No. 0172-2583724							
	<hr/>							
	To M/s Vishal Pipes Ltd., C-101, RDC Rajnagar, Ghazabad, U.P. Pin-201002,							
	Ph.No.- 0120-4636100 Fax No. 0172-5052730 Email- <a href="mailto:vyom@vishalpipes.com">vyom@vishalpipes.com</a>							
Memo No Ch-56 /HVPNL/VR/Tower Material		Dated: 07.10.2019						
<b>Subject:- Registration of Vendor for Tower &amp; Substations Structures.</b>								
Please refer your request for registration of vendor for Tower & Substations Structures with HVPNL vide your Ref No Nil dated 07.08.2019. HVPNL has decided to enroll you as approved vendor for supply of items as mentioned below:-								
<table border="1"> <thead> <tr> <th>Sr. No.</th> <th>Name of Equipment</th> <th>Factory Address</th> </tr> </thead> <tbody> <tr> <td>1.</td> <td>Tower &amp; Substations Structures</td> <td>           M/s Vishal Pipes Ltd., A-71, Industrial Area Sikandrabad,            Dist. Bulandshahr, U.P. Pin No. 0120-4636100, E-mail            ID:- <a href="mailto:vyom@vishalpipes.com">vyom@vishalpipes.com</a> </td> </tr> </tbody> </table>	Sr. No.	Name of Equipment	Factory Address	1.	Tower & Substations Structures	M/s Vishal Pipes Ltd., A-71, Industrial Area Sikandrabad, Dist. Bulandshahr, U.P. Pin No. 0120-4636100, E-mail ID:- <a href="mailto:vyom@vishalpipes.com">vyom@vishalpipes.com</a>		
Sr. No.	Name of Equipment	Factory Address						
1.	Tower & Substations Structures	M/s Vishal Pipes Ltd., A-71, Industrial Area Sikandrabad, Dist. Bulandshahr, U.P. Pin No. 0120-4636100, E-mail ID:- <a href="mailto:vyom@vishalpipes.com">vyom@vishalpipes.com</a>						
<b>Terms &amp; Conditions:-</b>								
1) The material shall be supplied as per HVPNL technical specification. 2) The firm will follow the rules and regulation laid down by HVPNL. 3) It is noted that you are Manufacturer of the above materials. The registration is subject to having valid license for manufacturing & supply of material. Please ensure that the same is renewed well in advance. 4) The registration will not apply to any of your branches / offices. You should promptly intimate this office about any change in your address, telephone no, Factory Partnership deed, Article of Association, capital structure etc. 5) The approval shall be valid for loose material to be supplied directly to HVPNL, or through turnkey contractor. 6) The registration of vendor shall be applicable for 3 years from the date of issue of this letter or validity period of type test certificates, whichever is earlier 7) HVPNL reserves the rights to withdraw the vendor approval, in case of any default or poor performance against any order placed by turnkey contractor or any order placed by HVPNL directly. 8) This enlistment does not guarantee any award of contract / purchase or any priority thereof.								
<div style="text-align: right;">         Superintending Engineer/MM-II,        O/o CEMM, HVPNL, Panchkula     </div>								

## HVPNL Approval - Sub Station Structures

# APPROVALS

CIN : U74899DL1905GOI068150  
दूरभाष Tel : 23417910/12  
फैक्स Fax : 23417901

**दिल्ली मेट्रो रेल कॉर्पोरेशन लि०**  
**DELHI METRO RAIL CORPORATION LTD.**  
(संयुक्त राज्य सरकार के दिल्ली मेट्रो रेल कॉर्पोरेशन का संयुक्त उद्यम)  
(A JOINT VENTURE OF GOVERNMENT OF INDIA AND GOVT OF DELHI)

No. DMRC/Corp/20/Design/001/99/Vol. X April 17, 2015

Chief General Manager,  
Vishal Pipes Limited,  
32, Nishant Kunj,  
Kohat Enclave, Pitampura,  
New Delhi-110034

Kind Attn:- Mr. Sandeep Chavla

Sub:- Approval for enlistment in the vendor list for supply of various steel and polymer products

Ref:- Your letter no. VPL/MKTG/REGN/2015-16 dated 14.04.2015

Dear Sir,

With reference to above, we have gone through all the credentials submitted by you vide letter dt. 14.04.2015 and it is found that **M/s Vishal Pipes Limited**, an ISO 9001:2008 & ISO 14001:2004 certified company, is a leading manufacturer of "VPL INDIA" brand quality.

It is also observed that **M/s Vishal Pipes Limited** is having clientele all over the country including NSIC Ltd., UP Jal Nigam Lucknow, Rail Coach Factory, Mazagon Dock Ltd., Mumbai, NTPC, Maharashtra Natural Gas Ltd., Visakhapatnam Steel Plant etc.

In view of above, we would like to inform you that we have 'no objection' in case **M/s Vishal Pipes Limited** supply its products viz. G.I. Pipes, M.S. Black Pipes, Plumbing Pipes & Hose Pipes, HDPE Pipes, Galvanized Scaffolding Structures, M.S. Black Scaffolding Structures, Scaffolding & Formwork Systems, M.S. Black Conduit Pipes, G.I. Conduit Pipes, PVC Conduit Pipes, Hot Dip Galvanized Road Safety Guard (W-Section Guard), Galvanized Earthing Electrodes, M.S. Black Earthing Electrodes, Galvanized Swaged Type Tubular Poles and M.S. Black Swaged Type Tubular Poles for Delhi Metro Rail Phase-II projects/its upcoming Metro Rail Projects/Metro Rail Projects in various other cities provided the same meets the requirements/specifications of the tenders, if any.

You are further requested to approach to our various contractors at sites, depending upon the requirements, for supply of your above product since DMRC is not directly procuring the products from vendors.

The quality of the products should meet the required strength and other DMRC specifications. Please also note that this approval is subject to the suitability and fulfillment with the technical requirements.

(मेट्रो भवन, फायर ब्रिगेड लेन, बारकम्बा रोड, नई दिल्ली-110001)  
Metro Bhawan, Fire Brigade Lane, Barakhamba Road, New Delhi-110001


- 2 -

However, the Corporation wholly reserves the rights to revoke/suspend the enlistment on the basis of review any time during the enlistment period.

Please note that this approval has been accorded on the condition of maintaining of quality intact. In case of any negative feedback and deterioration in quality, this approval will stand cancelled automatically. Mandatory checks about the quality will also be carried out as and when required so as to satisfy the site about the quality and the performance.

The above authorization, however, does not bind the Corporation in anyway for use of your products/services in the works.

Yours sincerely,

  
(Rajan Kataria)  
Executive Director/Technical

## DMRC Approval - Pipes & Structures

Phone(Off) : 0135-2676260  
FAX : 0135-2676177  
E-mail: cgm-js-ua@njic.in

**Uttarakhand Jal Sansthan**  
Office of the Chief General Manager,  
Jal Bhawan, 'B' Block, Nehru Colony, Dehradun

Letter No. 5109/Registration (Vishal) G.I. Pipe-MSERW Pipe-UJS / 2019-20 Dated: 17/01/19

**CERTIFICATION OF REGISTRATION**

It is hereby certified that the manufacturer-supplier detailed below, has been registered with the office of Executive Engineer, Central Store, Uttarakhand Jal Sansthan, Dehradun for the supply of G.I. Pipe and M.S. ERW Casing Pipe in the department "Uttarakhand Jal Sansthan" subject to general terms and conditions noted below and as laid down in Uttarakhand Peyjal Nigam guidelines for Enlistment of Manufacturer.

Name of Manufacturer-Supplier with full address (office)	Location of Factory/works	Telephone/Fax No./Email Add
M/s Vishal Pipes Ltd., 32, Nishant Kunj, 1st Floor, Kohat Enclave, Pitampura, Delhi.	A-71 & C-33, Industrial Area, Distt. Bulandshahr, Uttar Pradesh.	011-46205620, govtsales@vplgroup.com

**Terms & Condition**

S.No.	Pipe	IS Code	Class	Size
01	G.I. Pipe	63	84	15 to 150 mm NB
1	G.I. Pipe	1239 (Part-1) 2004	Medium and Heavy	
2	MS ERW Casing Pipe	4270/2001	FE-410	100 to 250 mm NB

- Registration/Renewal No. : 02/Jal Sansthan/G.I.Pipe-MSERW Pipe/
- Expiry date of Registration : 30.06.2021
- Registration on approved list does not guarantee award of contract(s) also.
- Whenever submitting a tender/offer in Uttarakhand Jal Sansthan, Registration No. as stated above must be quoted.
- This registration does not entitle exemption from depositing Earnest/Security Money against any tender/contract that may be offered/agreed upon by/with the firm in Uttarakhand Jal Sansthan.
- It shall be the responsibility of the firm to communicate promptly about all subsequent changes in the constitution and working of the firm in this office.
- The firm has declared that it has read the Rules for Enlistment of Manufacturer-supplier and given an undertaking to abide by them.
- Validity of Registration/Renewal will be governed by the validity of B.I.S. License.

(S.K. Sharma)  
Chief General Manager

Letter No. /Registration (Vishal) G.I. Pipe-MSERW Pipe-UJS / 2019-20 Dated:

Copy to the following for information and necessary action:

- General Manager (TRM), Uttarakhand Jal Sansthan, Dehradun.
- Secretary (Appraisal), Uttarakhand Jal Sansthan, Dehradun.
- Executive Engineer, Central Store, Uttarakhand Jal Sansthan, Dehradun/Haldwani
- M/s Vishal Pipes Ltd., 32, Nishant Kunj, 1st Floor, Kohat Enclave, Pitampura, Delhi-110034.  
011-46205620

- If a request for renewal of this registration: beyond the expiry date is not received before 30.06.2021, this registration shall stand cancelled automatically.
- Request for renewal of registration beyond 30.06.2021 should be accompanied with following documents.
  - Income Tax clearance certificates.
  - Annual Reports and Balance sheets.
  - I.S.I. License (latest)
  - Renewal fees as prescribed at the time of renewal.

Chief General Manager

## UJS Approval - Steel Pipes



## APPROVALS

**संचालनालय उद्यानिकी एवं प्रक्षेत्र वाणिकी**  
६ बी बिल्डिंग, विद्यमाना नगर, भोपाल, मध्य प्रदेश  
सं.सं.सं. ३३३-३३३३३३  
e-mail: emshahar@mp.gov.in, website: www.mphhorticulture.gov.in

क्रमांक/उद्यान/PMKSY/2/पंजी/2019-20/737 भोपाल, दिनांक 06/02/2020  
प्रति,

1. कलेक्टर  
सह-उपक्षेत्र, जिला कियामन्यन समिति (डी.एल.आई.सी.)  
जिला -सोनभद्र।

2. उप/सहायक संचालक उद्यान,  
जिला -सोनभद्र।

**विषय:-**प्रधानमंत्री कृषि सिंचाई योजना (PMKSY) के घटक "पर ड्रॉप मोर कॉप" (गाईको इरीगेशन) योजना में ड्रिप/स्प्रिंकलर निर्माता कंपनियों का पंजीयन बाबत।

-00-

1 भारत सरकार कृषि मंत्रालय, कृषि एवं सहकारिता विभाग नई दिल्ली द्वारा PMKSY अंतर्गत पंजीयन हेतु सिस्टम निर्माता कंपनियों से प्रस्ताव प्राप्त किए गए।

2 दिनांक 20.05.2014 को तकनीकी समिति की बैठक में निर्णय लिया गया कि सिस्टम निर्माता कंपनी को नवीन पंजीयन हेतु प्राप्त प्रस्तावों के परीक्षण एवं निर्मित सामग्री की उत्पादन इकाई का राज्य स्तरीय तकनीकी समिति द्वारा भौतिक सत्यापन एवं गुणवत्ता परीक्षण उपरान्त निम्न कम्पनी को योजनाअंतर्गत पंजीयन हेतु उपयुक्त पाया है।

क्र.	निर्माता कंपनी का नाम	ब्रांड नाम	कंपनी के संबंधित विवरण/पता/ई-मेल	सिस्टम प्रकार/प्रकार	अवधि हेतु अंतिम	पंजीयन क्रमांक/दिनांक
1	मेसर्स विशाल पाईप लिमिटेड	VPL INDIA	ए-68, ए-68/1, इन्डस्ट्रियल एरिया, सिकंदराबाद, जिला बुलंदशहर (उ.प्र.) E-Mail: info@vishalpipes.com	स्प्रिंकलर / PVC	दिनांक 06/02/2020 से 05/08/2024 तक	MIS/MP/71/06/02/2020
2	मेसर्स एपीएम इन्फ्रास्ट्रक्चर्स	एपीएम	मादली, इन्डस्ट्रियल एरिया, कसारबाद रोड, खरगोन जिला-खरगोन (म.प्र.) E-Mail: apitemd@rediffmail.com	ड्रिप/स्प्रिंकलर	दिनांक 06/02/2020 से 05/08/2024 तक	MIS/MP/71/06/02/2020
3	मेसर्स श्री सातार इन्फ्रास्ट्रक्चर्स	श्री कृष्णा	ए-1, रिको, औद्योगिक क्षेत्र, सारन, बंगल, जयपुर (राज.) E-Mail: shreesatard@rediffmail.com	ड्रिप	दिनांक 06/02/2020 से 05/08/2024 तक	MIS/MP/71/06/02/2020

अतः उपरोक्त कम्पनी को प्रधानमंत्री कृषि सिंचाई योजना (PMKSY) के घटक "पर ड्रॉप मोर कॉप" (गाईको इरीगेशन) में भारत सरकार कृषि मंत्रालय, कृषि एवं सहकारिता विभाग, द्वारा जारी गाईडलाइन में उल्लेखित बिंदु क्रमांक-16 एवं पंजीयन की शर्तों को अधीन मध्यप्रदेश में कार्य करने हेतु अधिकृत किया जाता है।

संलग्न - पंजीयन शर्तें

अभिषेक  
उद्यानिकी एवं प्रक्षेत्र वाणिकी  
मध्यप्रदेश, भोपाल  
Page 38

### Horticulture Dept. MP - Sprinkler Irrigation System

**Madhya Pradesh Jal Nigam Maryadit**  
List of newly enlisted Vendors for different materials against EO1  
Notice No. 1921/03/Tech/MPJNM/2018 Dated 19.04.2018

S.No.	Name of Item	Name of Firm	Name & Address of Manufacturing Unit	CML No. of Manufacturing Unit	Remark
(1)	(2)	(3)	(4)	(5)	(6)
		M/s Polyul Irrigation Systems Pvt.Ltd., Mumbai	M/s Polyul Irrigation Systems Pvt.Ltd. 137/1, Madhuban Dam, Village Karad, Silvassa, (DNGH) - 360230	CML-7899924	
		M/s Apollo Pipes Ltd. Delhi	M/s Apollo Pipes Ltd. Plot (Khasra No. 2928 & 2938), Dheem Manikpur, Dabhi, District G.B. Nagar (U.P.)	CML-3161342	
		M/s Vishal pipes Ltd. Delhi	M/s Vishal pipes Ltd. (Unit-3) A-68 and A-68/1, Industrial Area Sikandrabad-203205 (U.P.)	CML-2597677	
		M/s Vectus Industries Ltd. Noida	M/s Vectus Industries Ltd. Plot No. 41.42 Industrial Area, Bannore, District-Morena-476444	CML-8200019204	Subjected to condition that the firm shall have to submit the reference from BIS as per IS 4984 :2016
		M/s Parvati Irrigation Ltd. Ahmedabad	M/s Parvati Irrigation Ltd. Survey No. 214/1, 214/2, Vapara Shup, P.O. Lyava, Taluka, Sarand, District Ahmedabad-382170, (Gujarat)	CML-7014147	
		M/s Sagar Polytechnic Ltd. Rajkot	M/s Sagar Polytechnic Ltd. Plot no. 109-111 Bananore, Chorli, District - Surendra nagar - (Rajkot)	CML-7474787	
		M/s Nimbha Pipes Ltd. Jaipur	M/s Nimbha Pipes Ltd. SP-2, 123 & 123A, RICO Industrial Area, Mandu, Via-Chenna, Jaipur (Rajasthan)	CML-8742084	
3	Power Transformers	M/S Shri Ram Switchgears Ltd., Ratam	M/S Shri Ram Switchgears Ltd. 14-15, Industrial Estate, Ratam (M.P.)	CML-820004898	Only for Oil immersed distribution BEE 3 star rated transformer

Bhopal  
Date : 18.07.2018

(N.P. Malvia)  
Project Director

### MP Jal Nigam - HDPE Pipes

**Madhya Pradesh Urban Development Company Limited**  
(Department of Urban Development and Housing, Government of Madhya Pradesh)  
Project Management Unit

No./PMU/ENG/2018/1204 Bhopal, Date 07/04/2018

To,  
M/s Multiurbaninfra Services Private Ltd  
Savodhay Cloth Market, Handloom Bazar,  
Gandhi Barh, Nagpur, 440002

**Subject:** Submission of Credentials for HDPE Pipes (M/s Vishal Pipes Ltd) for Improvement of Water supply scheme at Susner, Pankhedi & Makdane Nagar Parishads in Agar, Shajapur and Ujjain districts respectively in Madhya Pradesh- Package No -3B

**Ref:** Letter no: 1) MISPL/BMPUDC/2017-18/99, dated 28/02/2018

This has reference to Letter No MISPL/BMPUDC/2017-18/99, dated 28/02/2018 with QAP & credentials for M/s Vishal Pipes Ltd.  
The credentials and QAP was reviewed. The approval of QAP is as Tabulated below-

S. No	Material	Manufacturer/Vendor	Remarks
1	HDPE Pipes as per IS4984	Vishal Pipes Ltd	QAP Approved as Noted

(M.K. Srivastava)  
Dy. Project Director (T)  
MPUDC

Copy to:  
1. Engineer-in-Chief, MPUDC, Bhopal for information please.  
2. Project Manager, PIU, Indore.  
3. Team Leader, PMC, Bhopal.  
4. Assistant Contract Manager, PIU(PMC), Indore

### MP UDCL - HDPE Pipes

**NORTHERN RAILWAY**  
(Registration of vendor)  
(Office of the Controller of Stores, Headquarters' office, Baroda House, New Delhi)

No. 104-S/10464/PGR/D-1 Dated 18-02-2020

To,  
M/s Vishal Pipes Limited,  
32, Nishant Kunj, 1st Floor,  
Near Kohat Enclave,  
Pitampura, New Delhi-110034.

PAN No. AAACV3101G  
GSTNo. 09AAACV3101G1ZR  
TAN No. N/A  
Bank A/C type Current A/C  
Bank A/C No. 10771961847  
IFSC Code: SBIN0011547  
MICR Code: 110002488  
E-Mail: -vishalpipe22@gmail.com

Name of Directors: Sh. R. S. Agarwal, Sh. N. K. Agarwal, Smt. Madhu Agarwal,  
Smt. Meena Agarwal, Sh. Vishal Agarwal, Sh. Rohit Singhla.

Contact No. 9717179053

Sub: - Registration of firm as an approved supplier.  
Ref: - Your letter No. VPL/NRVENDOR/2018-19/28 dated 02-11-2019

1.0I am directed to inform you that your application for enlistment of your firm/unit in the approved list of supplier to this railway has been accepted and it has been decided to enlist your firm on the approved list of suppliers for the under mentioned trade group's and category PROVISIONALY for a period of two years.

Trade group & Description	Vendor Code/Regn.	Category	Validity upto	Monetary limit	Status
6128, Tubular structures Pre-fabricated Collapsible steel gates, grills rolling shutters and similars items. 6207, G.I. Pipes and fittings 6228, Pipes seamless and E.R.W. 6235, P.V.C. Pipes. Flexible and rigid and Teflon Pipes.	V-0060	Large Scale	28-02-2022	Above 40 Lacs	Large Scale With Inspection.

2.0 Registration No./Vendor Code No. V-0060 has been allotted to you, which must be quoted in all your correspondence.

### Northern Railway - Pipes & Structure

# HEAVY STEEL FABRICATION

---

The structures are fabricated by using superior quality material and latest techniques to ensure that fabrication done by us is as per customer requirement. Fabrication process is carried out in accordance with the prescribed quality guidelines and norms. Our experts maintain regular communication with the customers and ensure that their needs are comprehended in an efficient manner. Besides, we ensure completion of projects within the minimum possible time-period.

# HEAVY STEEL FABRICATION

## COMPOSITE STEEL PLATE GIRDERS

These girders are used in ROB's and railway bridges. After completion of fabrication process these girders are shot blasted, shear connector studs and metalized / painted are efficiently welded on the top of flange.

Sizes:

- Flange 140mm to 1200mm, thickness 6mm to 80mm
- Web 180mm to 3000mm, thickness 6mm to 60mm
- Length 20 mtrs. (Customised sizes are also fabricated as per client specification.)

### FEATURES

- Good capacity to carry load in shear, tension and compression
- Members are visible and thinner, factory made, which helps us to predict the girder's behavior in reasonable manner
- These girders can be replaced easily
- Conveniently amenable to repairs and splicing
- These girders can efficiently carry heavy loads over longer time span with the minimum possible dead weight, leading towards smaller foundation
- As far as urban environment is concerned the limited space of working and traffic congestion is common, steel bridges are the best option which is constructed easily with less disturbances to the people and community.





## HEAVY STEEL FABRICATION

---

### OPEN WEB GIRDERS

Open web girders are used for track bridges over large rivers and valleys. Standard length of open web girders in railways are 30.5, 45.7, 61.0 and 76.2 meters. Depending on width requirements single and multiple cell girders are selected.

#### FEATURES

- High torsional stiffness and strength this enables the use of box girders in horizontally curved bridges and interchanges.
- Greater aerodynamic stability.
- Reduced susceptibility to lateral buckling of flanges in lateral-torsional and distortional buckling modes.
- Support point required are less compared to conventional systems.
- Improved durability.
- Reduced maintenance of protective coatings since the exposed surface is less and fewer edges are there and avoidance of exposed horizontal surfaces, no exposed bracing and stiffeners.
- Clean lines of a closed box girder provide better appearance for footbridges where the visual impact counts.



### BOWSTRING GIRDER

Bowstring bridge is an arch bridge in which the outward-directed horizontal forces of the arch are borne as tension by a chord tying the arch ends, rather than by the ground or the bridge foundations. This strengthened chord may be the deck structure itself or consist of separate, deck-independent tie-rods.

- Much like a through-truss bridge, except that the truss can be a higher, deeper segmental curve.
- Suitable for 50m - 150m spans.
- Attractive.
- Can be constructed on less robust foundations e.g. atop elevated piers/areas of uneven soil.
- Can be pre-fabricated offsite and hauled or lifted into place.





## HEAVY STEEL FABRICATION

---

### STEEL CHANNEL SLEEPERS

We fabricate mild steel channel sleeper which are used on tracks which are passed through bridges over rivers. These are light in weight and more accurate in dimensions as compare to wooden or concrete sleepers.

Steel sleepers have enormous advantages including lower cost and durability and sustain ability compared to wooden sleepers make them an effective technical solution for modern rail network in their state of the art and most modern in house galvanizing facility of steel channel sleepers.



# **STEEL STRUCTURE**



## RAILWAY OHE STRUCTURES

---

We are CORE approved vendor to manufacture and supply following structure for railway overhead electrification.

- Rolled Mast
- B-series Mast
- Special Fabricated Masts
- Portals
- Two Track Cantilever (TTC)
- Traction Sub-station
- Small Part Steel (SPS)

These structures are manufactured and galvanised as per RDSO specifications.

### APPROVED BY

Central Organisation For Railway Electrification  
(CORE), Prayagraj,





## METAL BEAM CRASH BARRIER

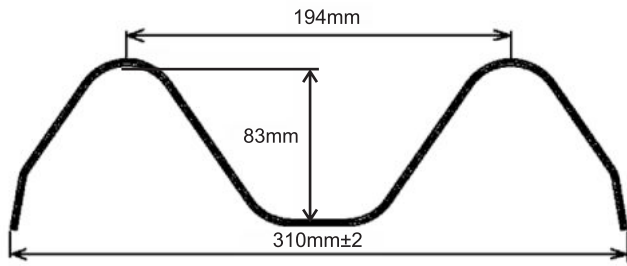
Vishal Pipes Ltd. is a leading manufacturer and supplier of metal beam crash barrier systems. Our range of road and highway safety barriers include the various types of W-Beam and Thrie-Beam systems.

These crash barriers are manufactured by using superior class raw materials and the latest technology in order to ensure the finest quality products. We continue to service our customers through our ongoing program of research and development.

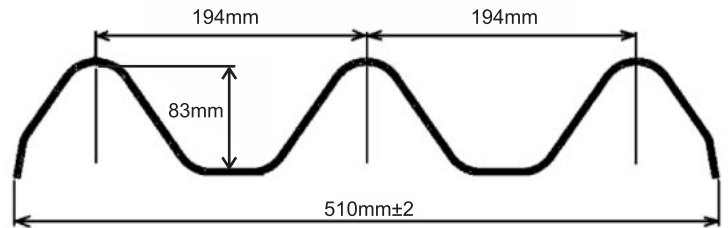
Guard rail or Metal Crash Barriers are very effective road safety systems which help in protecting vehicles and the passengers in case of an accident and also serve as a good visual guide for drivers, especially in the night. Vishal Pipes Limited supplies the best Guard rails which are strong, sturdy and aesthetic.

Our crash barrier systems are widely used for highways, flyovers, bridges and median barriers as road separators, hilly terrain, Ghats, curves, high embankments, airports and railway stations among others.

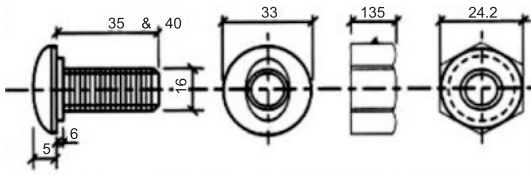




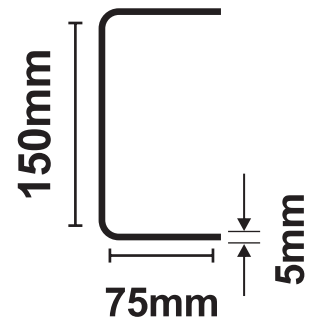
**W Beam**



**Thrie Beam**



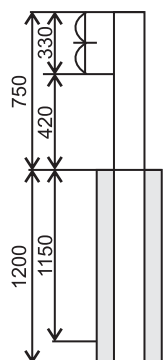
**Button Head Bolts**



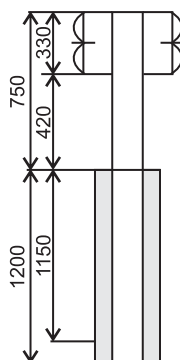
**Post & Spacer**

SECTION	LENGTH (MM)	SIZE (MM)	THICKNESS (MM)
W Beam	4318	310	2.67-3.5
Thrie Beam	4318	510	2.67-3.5
Post	1200-2000	150x75	5
Spacer	330-530	150x75	5

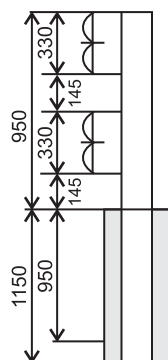
## CRASH BARRIERS GRAPH



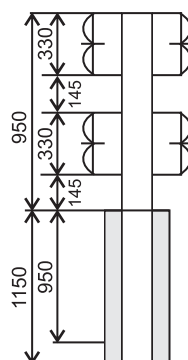
Single Side  
Single Guardrail



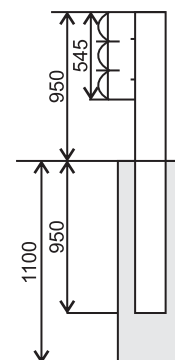
Double Side  
Single Guardrail



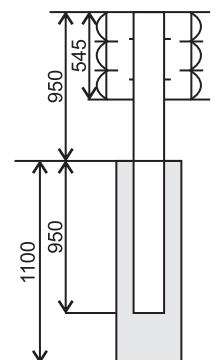
Single Side  
Double Guardrail



Double Side  
Double Guardrail



Single Side  
Thrie Beam Guardrail



Double Side  
Thrie Beam Guardrail



## SOLAR MODULE MOUNTING STRUCTURE

---

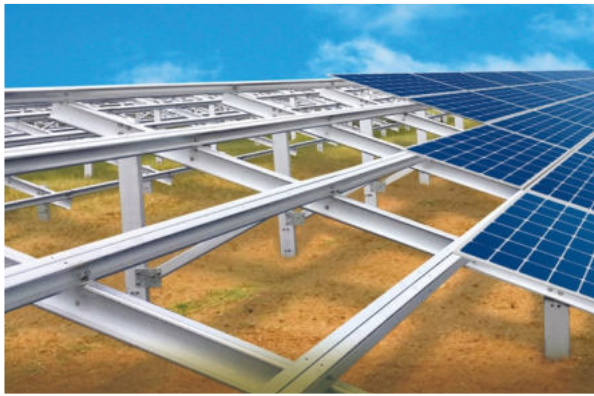
One of the prime drivers in the asset valuation of a solar power plant is the Module Mounting Structures (MMS) which is a key ingredient in the successful running of a solar power plant.

We manufacture solar PV module mounting structures (MMS) for land based solar power plants. The structure is manufactured using superior quality materials and parts. Our solar MMS combine optimum dimensioning, short mounting times, economic efficiency and maximum durability to ensure optimal returns on investments for all kinds of PV installations. Our Solar MMS design can be customized to fit all types of PV modules and can be optimized for varied soil types - from sandy deserts to hard rocky terrain.

MMS are supplied in vast spectrum of sectional dimensions and thickness (0.60 mm to 7.00 mm).

We manufacture and supply MMS in Hot Dip Galvanized (HDG), Pre-Galvanized and Galvalume.

We manufacture and supply Torque Tubes for smart solar trackers.





## POWER SUB STATION STRUCTURES

These structures includes Gantries and Equipment Support Structures. Gantry structures are mainly used for guiding the power conductor from last tower near substation to the electrical equipments in a substation. This structure consist of a number of columns and Girder beams, which depend on number of circuits of the line. Gantries are also used for line crossing.

Power conductors of one line can be underpassed with the help of required number of gantries. Equipment Support Structures are columns, supporting electric equipments in a substation.

We offer wide range Substation Structures for all types and varieties of Power Sub Station up to 765 KV.

We have full in-house Fabrication and Hot Dip Galvanizing Facilities that assist in the quality production of the Power Distribution Structures.

### APPROVED BY

- Power Grid Corporation of India
- Himachal Pradesh State Electricity Board
- Haryana Vidyut Prasaram Nigam Ltd.
- Bihar State power transmission company ltd.  
& various power distribution companies





### ROOF TOP TOWERS (RTT)

Roof Top Towers are installed on the roof of building in urban and semi-urban areas, where enough space is not available for GBT. These low height towers (12 to 24 meter) helps to cover the maximum network coverage in the nearby areas. RTTs are required for smooth data network for urban/semi-urban areas.

Features :

- These are installed on roof of building to get the maximum AGL with minimum space.
- Cost effective in comparsion to GBT

### ROOF TOP POLES (RTP)

Roof Top Poles are installed on high rise buildings to cover the Network Coverage in the highly populated areas. These are available from 6 to 12 meters height. RTPs are required for Speedy and Smooth Network Coverage in the Dense/High populated areas.

Features :

- Requires very less space (approx 200 sq.ft.)
- Light weight and easy to install
- Cost Effective



### GROUND BASED TOWER (GBT)

For covering long distance areas and providing services in Rural and semi-urban areas Ground Based Towers are the preferred telecom solution. There are three types of Ground Based Towers – Angular, Tubular and Hybrid Towers. We install the same for Telecom Network Providers according to the requirement.

Features:

- These are available from 30 to 60 meters height which helps to cover larger area from network perspective.
- These towers are built of heavy steel structure, hence there is no constrain for equipments loading.



## PRE - ENGINEERED BUILDING

---

We are manufacturer and supplier of Pre Engineered Buildings.

We design these as per the specification of the client.

These services provided by us are to be fabricated using best suited inventory of raw materials available from all sources and manufacturing methods that can efficiently satisfy a wide range of structural and aesthetic design requirements.

We offer turnkey solution for PEB under one structure, beginning with designing, fabrication, production and till installation. The offered structures are high in demand due to its energy efficiency and superior load bearing strength. We are developing these structures for creating factory sheds, warehouse, dairy farm sheds and low rise industrial buildings.

They are high in quality and meet the client's requirement in every term of quality. They are sturdy in construction, require less maintenance and give the constant performance to the user with any problem. Our offered product is well known for attributes like weather resistance and easy installation.



## RURAL ELECTRIFICATION STRUCTURE

---

One of the key challenges of the electricity sector is development of rural electrification. This has been a problem not only in India but also across the globe. Even today, a big chunk of population in rural areas of developing and under developed countries do not have access to commercial forms of energy like electricity and are still dependent on the use of traditional fuels for power.

Rural electrification is the process of bringing electrical power to rural and remote areas. Rural communities are suffering from colossal market failures as the national grids fall short of their demand for electricity.

The power generation sector has faced tremendous challenges till now especially with rural electrification. But with the governments increasing focus on rural electrification to establish the route of sustainable growth presents with a business opportunity in providing steel structures for Rural Electrification. We at Vishal Pipes Ltd. are leading manufacturer & supplier of pre-fabricated galvanized items required in rural electrification in India. Our quality has been appreciated through out the county and have received repeated orders too.

### APPROVED BY

Various Power Distribution company in India.





## STRUCTURE FOR POWER PLANTS

We offer support structures for power plants, like handrails, pipe bracing and other secondary structures.

### HAND RAILS

We offer customized, fabricated & cost effective handrails system that are widely used to guard platforms, stairways, towers, danger zones and other areas where safety is a prime concern. These handrails are heavy duty type with better load carrying capacity, and specially recommended for highly corrosive weather conditions.



### SECONDARY STRUCTURE

We offer customized secondary structure for power plant. These structures are made of steel tubes, angle, channel, beams & other steel components. These are supplied after proper surface preparation as per NACE guidelines and painted too.

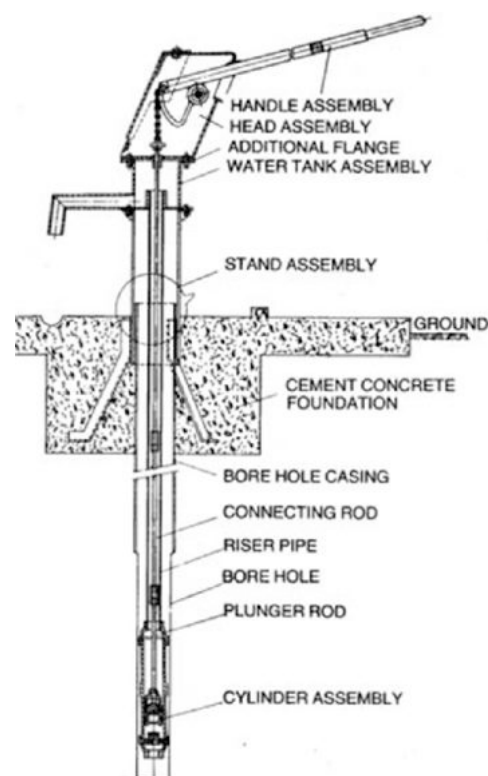


## DEEPWELL WATER HANDPUMPS

### INDIA MARK-II DEEP WELL HAND PUMP

#### FEATURES

- India Mark II Deep Well Hand pump / hand well pump as per Bureau of Indian Standard Specifications with 63.5mm dia cast iron brass sleeved cylinder assembly.
- The above-ground mechanism is fabricated from welded steel plates and sections for strength, and hot-dip galvanized for corrosion resistance.
- A chain and quadrant mechanism of the pump handle provides easy and accurate alignment of the connecting rod.
- The handle bar (32±1) mm has a high mechanical advantage and is designed to counter balance the weight of the connecting rods to reduce the pumping effort required by the user.
- Sealed ball bearings for the handle on a stainless steel axle adds to the ease of operation and lower maintenance needs.



#### STROKE LENGTH & DISCHARGE OF PUMPS

Hand Pump Type	Stroke Length	Discharge Minimum in liters (40 Strokes/Minute)
Standard	125±4	15

- The water tank assembly has an appropriate coupler to suit 32 mm NB medium class galvanized iron (GI) riser pipes or uPVC pipes.
- Riser pipes are comprised of locally available standard 32 mm NB GI pipes. Other options such as upvc, HDPE & FGP are also available.
- Connecting rods are of bright steel bar with threaded and couplers and are electro-galvanized against corrosion. Alternatively stainless steel rods are also available for better performance.
- The cylinder is made from a cast iron with brass liner and gun metal Plunger Valve and check valve components. All nitrile rubber parts like Pump Bucket, Sealing Ring, Upper Valve Seating & Lower Valve seating are made from high quality Nitrile Rubber.



#### SPECIFICATION :

Minimum Bore Size	100 mm.
Internal dia. of Cylinder	63.5 mm
Stroke length	125±4 mm
Operating depth (approx.)	up to 45 meters

## DEEPWELL WATER HANDPUMPS

### EXTRA DEEPWELL HAND PUMP

Extra Deep Well Hand Pumps discharges 12 litres (minimum) per minute per 40 strokes with an average installation range of the cylinders varying between 45 m to 90 m below ground level. These pumps are available with Normal Stand & telescopic stand.

Using finest quality steel and integrated with advanced working mechanism. These pumps offer optimum water discharge and are suitable for preventive maintenance with simple tools. These products are highly reliable and durable.

The Extra Deep Well Pumps set consists of the followings:

- Optional Telescopic Stand Assembly
- Pump Head
- Connecting Rod, Mild Steel Electro Galvanized (20 nos.)
- Option-Connecting Rod SS (20 Nos.)
- Cylinder assembly
- Riser Pipe 32 mm (1 1/4" NB with socket (20 Nos.)
- Set of Hex Bolts and Nuts
- Heavier sq. section (40mm) handle Assy. fixed with bearings (2 Nos.), T-Bar and (3 nos. of triangular counter weights if required)
- Chain with coupling
- Third plate (intermediate flange)
- Water Tank Assembly with 32mm (1-1/4") R.P. Holder
- Normal Stand Assembly

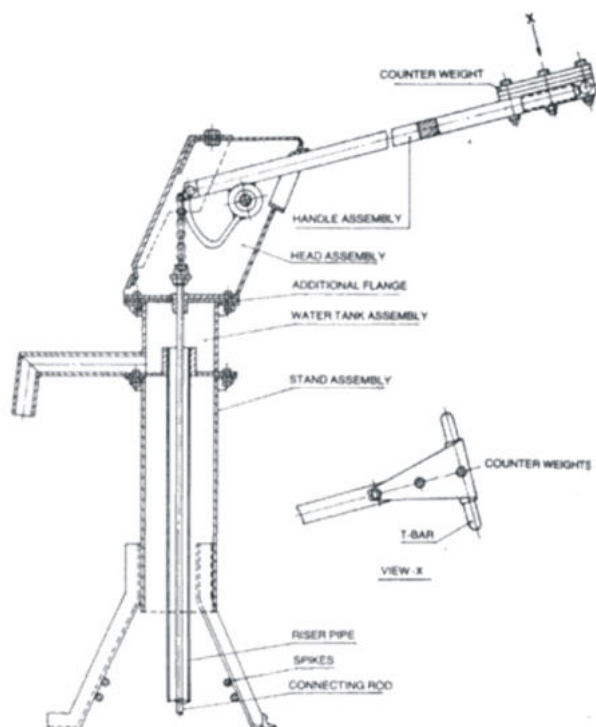


### STROKE LENGTH & DISCHARGE OF PUMPS

Hand Pump Type	Stroke Length	Discharge Minimum in liters (40 Strokes/Minute)
Extra Deep	100±4	12

#### SPECIFICATION :

Minimum Bore Size	100 mm.
Internal dia. of Cylinder	63.5 mm
Stroke length	100±4 mm
Up to 60 meter	up to 45 meters
61 meter to 70 meter	One Weight
71 meter to 80 meter	Two Weight
81 meter to 90 meter	Three Weight





## DEEPWELL WATER HANDPUMPS

### AFRIDEV HAND PUMP: DESIGNED FOR AFRICA

The Afridev Pump was designed on the basis of field trials in Africa.

The Afridev hand pump is a pump which can pump water from up to 45-60 meters below ground surface. This pump is designed with a cylinder which allows the piston to be extracted without removing the rising main.

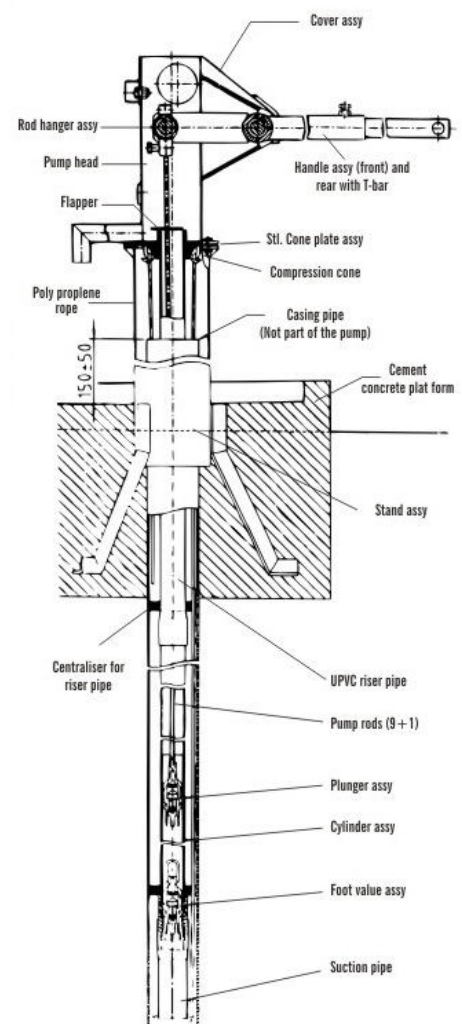
All the specifications of the Pump are controlled by SKAT and the specifications have undergone 5 Revisions.

It is widely used in almost all the regions of Africa and is one of the biggest success stories of the continent.



### THIS PUMP IS VERY POPULAR IN MOST PARTS OF AFRICA. THE SALIENT FEATURES OF THIS PUMP ARE :

- Static water level - 20 mtr to 450 mtr
- Cylinder Assembly - it is made of UPVC pipe with brass liner inside and plunger valve and foot valve either brass or nylon (Derlin)
- Riser pipe - UPVC (OD 63 mm x thickness 4.7 mm)
- Casing Pipe - 100 mm to 200 mm it can also be used in Dug Wells
- Pump Rod - it is either Threaded or Eye Hook type made of SS or MS
- Bearing bushes are made from especially high quality plastics
- Pump is hot dip galvanized, use high quality zinc.
- Variable handle settings are possible to meet changes in water levels at different times.
- Customization of spout length and Pedestal is possible.
- Choice of Eye & hook connecting rod or threaded connecting rod.
- Discharge - 16.5 ltr per minute in 40 stroke
- Stroke length -  $225 \pm 6$  mm with an installation depth range between 15 m to 45 m.
- Easy to install can be accomplished by village women mechanics.
- Alternative stainless steel lined cylinder available for aggressive water conditions.
- Quick release Eye & Hook tool-less ends on Connecting Rods with rubber Centralizers facilitate maintenance and protect the riser pipe against internal wear.
- Connecting rods are available in Mild Steel as well as Stainless Steel.
- Special tools for installation & maintenance of Afridev is available.
- Installation Manual is also provided with each pump.





## DEEPWELL WATER HANDPUMPS

### DEEP WELL HAND PUMP AS PER IS 15500

Borewell and Range of Static Water Level, Stroke Length & Discharge of Pumps.

S. No.	Hand Pump Type	Bore Well / Casing (N.B, Min) in (MM)	Static Water Level (Range in Meters)	Stroke Length	Discharge Minimum in (40 Strokes/Min.)
1	Standard	100	100	100	15
2	VLOM - 65	125	125	125	15
3	VLOM - 65	100	100	100	10
4	Extra Deep	100	100	100	12

#### FEATURES :

- Easy to Install
- Resistant to Corrosion
- Used High Quality Nitrile Rubber, Leaded Tin Bronze & Brass Liner
- Superior Water Discharging Capacity
- Longer Working Life
- Minimum Maintenance Costs



# **STEEL POLES**

## STEEL POLES

We manufacture entire range of swaged poles confirming to IS: 2713. We have all required testing facilities and machineries like hydraulic swaging machines, strengthening and welding machines and has facilities to produce poles upto 16 meter and thickness up to 12 mm. The swaged poles are manufactured completely in-house starting from manufacturing of steel pipes, swaging unit, painting & galvanizing.

### FEATURES

- Fireproof, immune to insect infestations and no pole rot
- Weighs 40 to 50 % less than comparable concrete structures
- Elongation upto 75 % with no shrinkage
- Free of copper wire grounding
- Capable of galvanizing all sizes of poles

### APPROVED BY

- Power Grid Corporation of India
- U.P. power corporation ltd.
- J & K power development DEPT
- Rural Electric Corporation Ltd.
- Uttrakhand Power Corporation Ltd.

& various other power distribution companies

## STREET LIGHT POLES

Street Light poles can be of multiple types such as octagonal, tubular, conical in shape. We can manufacture / customize street light poles as per as per the customers specifications and drawings.

### APPLICATIONS

- Street Lighting
- Traffic Signals support
- Overhead power line support
- Aerial OFC



## STEEL POLES

### STEEL TUBULAR POLES (SWAGED TYPE) CONFORMING TO IS 2713

Desig - nation	OVERALL LENGTH	PLANTING DEPTH	LENGTH OF SECTIONS			OUTSIDE DIAMETER AND THICKNESS OF SECTIONS			APPROX. WEIGHT OF POLE	BREAKING LOAD	LOAD FOR PERMANENT SET NOT EXCEEDING 13MM	LOAD FOR TEMPORARY DEFLECTION OF 157.5 MM
			Bottom	Middle	Top	Bottom	Middle	Top				
	L	L	h3	h2	h1							
1	2	3	4	5	6	7	8	9	10	11	12	13
(MM)	(M)	(M)	(M)	(M)	(M)	(MM)	(MM)	(MM)	(KG)	N (KGF)	N (KGF)	N (KGF)
410 SP - 1	7	1.25	4	1.5	1.5	114.3X3.65	88.9X3.25	76.1X3.25	62	2570 (262)	1245 (127)	785 (80)
410 SP - 2	7	1.25	4	1.5	1.5	114.5X4.50	88.9X4.05	76.1X3.25	73	3100 (316)	1510 (154)	941 (96)
410 SP - 3	7	1.25	4	1.5	1.5	114.5X5.40	88.9X4.85	76.1X3.25	85	3630 (370)	1760 (180)	1090 (111)
410 SP - 4	7.5	1.25	4.5	1.5	1.5	114.3X3.65	88.9X3.25	76.1X3.25	67	2350 (240)	1150 (117)	627 (64)
410 SP - 5	7.5	1.25	4.5	1.5	1.5	114.5X4.50	88.9X4.05	76.1X3.25	79	2760 (281)	1340 (137)	745 (76)
410 SP - 6	7.5	1.25	4.5	1.5	1.5	114.5X5.40	88.9X4.85	76.1X3.25	93	3320 (339)	1620 (165)	873 (89)
410 SP - 7	7.5	1.25	4.5	1.5	1.5	139.7X4.50	114.3X3.65	88.9X3.25	97	4330 (442)	2110 (215)	1400 (143)
410 SP - 8	7.5	1.25	4.5	1.5	1.5	139.7X4.85	114.3X3.65	88.9X3.25	103	4630 (472)	2250 (229)	1480 (151)
410 SP - 9	7.5	1.25	4.5	1.5	1.5	139.7X5.40	114.3X3.65	88.9X3.25	110	5100 (520)	2480 (253)	1600 (163)
410 SP - 10	8	1.5	4.5	1.75	1.75	114.3X3.65	88.9X3.25	76.1X3.25	70	2260 (230)	1100 (112)	520 (53)
410 SP - 11	8	1.5	4.5	1.75	1.75	114.5X4.50	88.9X4.05	76.1X3.25	83	2730 (278)	1320 (135)	618 (63)
410 SP - 12	8	1.5	4.5	1.75	1.75	114.5X5.40	88.9X4.85	76.1X3.25	97	3190 (325)	1550 (158)	725 (74)
410 SP - 13	8	1.5	4.5	1.75	1.75	139.7X4.50	114.3X3.65	88.9X3.25	101	4160 (424)	2020 (206)	1180 (120)
410 SP - 14	8	1.5	4.5	1.75	1.75	139.7X4.85	114.3X4.50	88.9X3.25	111	4440 (453)	2160 (220)	1280 (131)
410 SP - 15	8	1.5	4.5	1.75	1.75	139.7X5.40	114.3X4.50	88.9X3.25	119	4890 (499)	2380 (243)	1380 (140)
410 SP - 16	8.5	1.5	5	1.75	1.75	114.3X3.65	88.9X3.25	76.1X3.25	75	2090 (213)	1020 (104)	432 (44)
410 SP - 17	8.5	1.5	5	1.75	1.75	114.5X4.50	88.9X4.05	76.1X3.25	89	2520 (257)	1230 (125)	510 (52)
410 SP - 18	8.5	1.5	5	1.75	1.75	114.5X5.40	88.9X4.85	76.1X3.25	104	2950 (301)	1430 (146)	598 (61)
410 SP - 19	8.5	1.5	5	1.75	1.75	139.7X4.50	114.3X3.65	88.9X3.25	109	3844 (392)	1800 (191)	961 (98)
410 SP - 20	8.5	1.5	5	1.75	1.75	139.7X4.85	114.3X3.65	88.9X3.25	115	4110 (419)	2000 (204)	1010 (103)
410 SP - 21	8.5	1.5	5	1.75	1.75	139.7X5.40	114.3X4.50	88.9X3.25	129	4530 (462)	2210 (225)	1130 (115)
410 SP - 22	8.5	1.5	5	1.75	1.75	165.1X4.50	139.7X4.50	114.3X3.65	141	5450 (556)	2650 (270)	1730 (176)
410 SP - 23	8.5	1.5	5	1.75	1.75	165.1X4.85	139.7X4.50	114.3X3.65	148	5840 (596)	2840 (290)	1820 (186)
410 SP - 24	8.5	1.5	5	1.75	1.75	165.1X5.40	139.7X4.50	114.3X3.65	158	6450 (658)	3140 (320)	1970 (201)
410 SP - 25	9	1.5	5	2	2	114.3X3.65	88.9X3.25	76.1X3.25	78	1940 (198)	941 (96)	333 (34)
410 SP - 26	9	1.5	5	2	2	114.5X4.50	88.9X4.05	76.1X3.25	92	2340 (239)	1140 (116)	402 (41)
410 SP - 27	9	1.5	5	2	2	114.5X5.40	88.9X4.85	76.1X3.25	108	2750 (280)	1330 (136)	461 (47)
410 SP - 28	9	1.5	5	2	2	139.7X4.50	114.3X3.65	88.9X3.25	113	3580 (365)	1740 (177)	745 (76)
410 SP - 29	9	1.5	5	2	2	139.7X4.85	114.3X4.50	88.9X3.25	125	3820 (390)	1860 (190)	814 (83)
410 SP - 30	9	1.5	5	2	2	139.7X5.40	114.3X4.50	88.9X3.25	133	4220 (430)	2050 (209)	882 (90)
410 SP - 31	9	1.5	5	2	2	165.1X4.50	139.7X4.50	114.3X3.65	147	5070 (517)	2460 (251)	1360 (139)
410 SP - 32	9	1.5	5	2	2	165.1X4.85	139.7X4.50	114.3X3.65	154	5430 (554)	2640 (269)	1430 (146)
410 SP - 33	9	1.5	5	2	2	165.1X5.40	139.7X4.50	114.3X3.65	164	6000 (612)	2910 (297)	1540 (157)
410 SP - 34	9.5	1.8	5	2.25	2.25	139.7X4.50	114.3X4.50	88.9X3.25	122	3630 (370)	1760 (180)	745 (76)
410 SP - 35	9.5	1.8	5	2.25	2.25	139.7X4.85	114.3X4.50	88.9X3.25	129	3880 (396)	1880 (192)	784 (80)
410 SP - 36	9.5	1.8	5	2.25	2.25	139.7X5.40	114.3X4.50	88.9X3.25	137	4280 (436)	2080 (212)	833 (85)
410 SP - 37	9.5	1.8	5	2.25	2.25	165.1X4.50	139.7X4.50	114.3X3.65	153	5150 (525)	2500 (255)	1300 (133)
410 SP - 38	9.5	1.8	5	2.25	2.25	165.1X4.85	139.7X4.50	114.3X3.65	160	5510 (562)	2680 (273)	1370 (140)
410 SP - 39	9.5	1.8	5	2.25	2.25	165.1X5.40	139.7X4.50	114.3X3.65	170	6090 (621)	2960 (302)	1480 (151)
410 SP - 40	10	1.8	5.2	2.4	2.4	139.7X4.50	114.3X4.50	88.9X3.25	128	3390 (346)	1650 (168)	608 (62)



## STEEL POLES

### STEEL TUBULAR POLES (SWAGED TYPE) CONFORMING TO IS 2713

Design - nation	OVERALL LENGTH	OVERALL LENGTH	LENGTH OF SECTIONS			OUTSIDE DIAMETER AND THICKNESS OF SECTIONS			APPROX. WEIGHT OF POLE	BREAKING LOAD	LOAD FOR PERMANENT SET NOT EXCEEDING 13MM	LOAD FOR TEMPORARY DEFLECTION OF 157.5 MM
			Bottom	Middle	Top	Bottom	Middle	Top				
1	2	3	4	5	6	7	8	9	10	11	12	13
(MM)	(M)	(M)	(M)	(M)	(M)	(MM)	(MM)	(MM)	(KG)	N (KGF)	N (KGF)	N (KGF)
410 SP - 41	10	1.8	5.2	2.4	2.4	139.7x4.85	114.3x4.50	88.9x3.25	135	3630 (370)	1760 (180)	637 (65)
410 SP - 42	10	1.8	5.2	2.4	2.4	139.7x5.40	114.3x4.50	88.9x3.25	144	3990 (407)	1940 (198)	677 (69)
410 SP - 43	10	1.8	5.2	2.4	2.4	165.1x4.50	139.7x4.50	114.3x3.65	160	4810 (490)	2330 (238)	1060 (108)
410 SP - 44	10	1.8	5.2	2.4	2.4	165.1x4.85	139.7x4.50	114.3x3.65	168	5150 (525)	2500 (255)	1120 (114)
410 SP - 45	10	1.8	5.2	2.4	2.4	165.1x5.40	139.7x4.50	114.3x3.65	178	5690 (580)	2760 (282)	1200 (122)
410 SP - 46	10	1.8	5.2	2.4	2.4	193.7x4.85	165.1x4.50	139.7x4.50	208	7210 (735)	3500 (357)	1850 (189)
410 SP - 47	10	1.8	5.2	2.4	2.4	193.7x5.40	165.1x4.50	139.7x4.50	221	7910 (807)	3840 (392)	1990 (203)
410 SP - 48	10	1.8	5.2	2.4	2.4	193.7x5.90	165.1x4.50	139.7x4.50	233	8620 (879)	4190 (427)	2110 (215)
410 SP - 49	11	1.8	5.6	2.7	2.7	139.7x4.85	114.3x4.50	88.9x3.25	140	3000 (306)	1460 (149)	412 (42)
410 SP - 50	11	1.8	5.6	2.7	2.7	139.7x5.40	114.3x4.50	88.9x3.25	147	3210 (327)	1560 (159)	431 (44)
410 SP - 51	11	1.8	5.6	2.7	2.7	139.7x5.40	114.3x5.00	88.9x3.25	164	3530 (360)	1720 (175)	480 (49)
410 SP - 52	11	1.8	5.6	2.7	2.7	165.1x4.50	139.7x4.50	114.3x3.65	175	4250 (433)	2060 (210)	726 (74)
410 SP - 53	11	1.8	5.6	2.7	2.7	165.1x4.85	139.7x4.50	114.3x3.65	183	4550 (464)	2220 (226)	765 (78)
410 SP - 54	11	1.8	5.6	2.7	2.7	165.1x5.40	139.7x4.50	114.3x3.65	194	5030 (513)	2440 (249)	814 (83)
410 SP - 55	11	1.8	5.6	2.7	2.7	193.7x4.85	165.1x4.50	139.7x4.50	227	6370 (650)	3100 (316)	1270 (130)
410 SP - 56	11	1.8	5.6	2.7	2.7	193.7x5.40	165.1x4.50	139.7x4.50	241	6990 (713)	3400 (347)	1370 (140)
410 SP - 57	11	1.8	5.6	2.7	2.7	193.7x5.90	165.1x4.85	139.7x4.50	256	7620 (777)	3710 (378)	1470 (150)
410 SP - 58	12	2	5.8	3.1	3.1	165.1x4.50	139.7x4.50	114.3x3.65	186	3880 (396)	1880 (192)	539 (55)
410 SP - 59	12	2	5.8	3.1	3.1	165.1x4.85	139.7x4.50	114.3x3.65	197	4160 (424)	2020 (206)	569 (58)
410 SP - 60	12	2	5.8	3.1	3.1	165.1x5.40	139.7x4.50	114.3x3.65	208	4600 (469)	2240 (228)	598 (61)
410 SP - 61	12	2	5.8	3.1	3.1	193.7x4.85	165.1x4.50	139.7x4.50	245	5820 (594)	2830 (289)	951 (97)
410 SP - 62	12	2	5.8	3.1	3.1	193.7x5.40	165.1x4.50	139.7x4.50	259	6390 (652)	3110 (317)	1010 (103)
410 SP - 63	12	2	5.8	3.1	3.1	193.7x5.90	165.1x4.85	139.7x4.50	277	6960 (710)	3390 (345)	1090 (111)
410 SP - 64	12	2	5.8	3.1	3.1	219.1x4.85	193.7x4.85	165.1x4.50	292	7490 (764)	3640 (371)	1460 (149)
410 SP - 65	12	2	5.8	3.1	3.1	219.1x5.60	193.7x4.85	165.1x4.50	313	8530 (871)	4150 (423)	1610 (164)
410 SP - 66	12	2	5.8	3.1	3.1	219.1x5.90	193.7x4.85	165.1x4.50	322	8980 (916)	4360 (445)	1660 (169)
410 SP - 67	13	2	5.8	3.6	3.6	193.7x4.85	165.1x4.50	139.7x4.50	261	5270 (537)	2560 (261)	677 (69)
410 SP - 68	13	2	5.8	3.6	3.6	193.7x5.40	165.1x4.85	139.7x4.50	281	5790 (590)	2810 (287)	735 (75)
410 SP - 69	13	2	5.8	3.6	3.6	193.7x5.90	165.1x5.40	139.7x4.50	302	6300 (642)	3060 (312)	794 (81)
410 SP - 70	13	2	5.8	3.6	3.6	219.1x4.85	193.7x4.85	165.1x4.50	312	6780 (691)	3300 (336)	1060 (108)
410 SP - 71	13	2	5.8	3.6	3.6	219.1x5.60	193.7x4.85	165.1x4.50	333	7720 (787)	3750 (382)	1160 (118)
410 SP - 72	13	2	5.8	3.6	3.6	219.1x5.90	193.7x4.85	165.1x4.50	343	8120 (828)	3940 (402)	1190 (121)
410 SP - 73	14.5	2	6.5	4	4	193.7x5.40	165.1x5.40	139.7x4.50	312	5050 (515)	2450 (250)	500 (51)
410 SP - 74	14.5	2	6.5	4	4	193.7x5.90	193.7x4.85	139.7x4.50	336	5500 (561)	2680 (273)	539 (55)
410 SP - 75	14.5	2	6.5	4	4	219.1x5.60	193.7x4.85	165.1x4.50	370	6750 (688)	3780 (334)	775 (79)
410 SP - 76	14.5	2	6.5	4	4	219.1x5.90	193.7x4.85	165.1x4.50	380	7100 (724)	3450 (352)	794 (81)
410 SP - 77	16	2.3	7	4.5	4.5	193.7x5.40	165.1x5.40	139.7x4.50	341	4590 (468)	2230 (227)	363 (37)
410 SP - 78	16	2.3	7	4.5	4.5	193.7x5.90	193.7x4.85	139.7x4.50	367	5000 (510)	2430 (248)	392 (40)
410 SP - 79	16	2.3	7	4.5	4.5	219.1x5.60	193.7x4.85	165.1x4.50	405	6130 (625)	2980 (304)	569 (58)
410 SP - 80	16	2.3	7	4.5	4.5	219.1x5.90	193.7x4.85	165.1x4.50	416	6440 (657)	3130 (319)	588 (60)

## STEEL POLES

### POLE FOR AERIAL OFC

VPL India poles comes with strength and stability to withstand torsional stress offering minimum wind resistance and perfect elasticity to take all kinds of shocks, cyclones, thrust line breakages, etc. Aerial OFC steel poles are designed and customized to meet the versatile demands of architects, engineers, planners and more for power distribution, illumination, signage and other diverse needs.

The standard poles for aerial cable installations are galvanized steel poles of the sizes 7 & 8 meters. The Steel poles are tubular in design and shall be swaged.

#### FEATURES

- Wind load: Due to the curvature of the surface, the wind load is only about 60% of the total flat surface.
- Strength: The uniform distribution of metal in the cross section of the tubular poles provides the same strength in each direction.
- Corrosion resistance: Due to its smooth surface, the tubular poles have minimum risk of corrosion.
- Installation: The pipes are easy to install and easy to handle, thanks to their light weight.



# **POLYOLEFIN PIPES & FITTINGS**

---



## HDPE PIPES

### HDPE PIPES FOR POTABLE WATER SUPPLY CONFORMING TO **IS 4984**

These pipes are manufactured using superior quality raw material with the help of state-of-the-art manufacturing facilities. HDPE pipes are designed to cater application requirements of water supply, irrigation, bore-wells, drainage, infrastructure projects and industries. These pipes are equipped with many outstanding features that assures long term system performance at lower maintenance cost.

#### FEATURES

- High reliability and proven service performance
- Excellent chemical and corrosion resistance
- Excellent flow characteristics
- High impact strength
- Long service life
- It can be jointed by Butt / Electro / Socket Fusion Compression / Flanged / Coupling Joint

Sizes	Length
20 to 50 mm	In Coil of 100, 200, 500 & 1000 meter
63 to 75 mm	In Coil of 100, 200 & 300 meter
90 to 110 mm	In Coil of 50, 100 meter In Straight Length of 6 to 12 meter
125 to 630 mm	Straight Length 6 to 12 meter

Applications				
Water Supply	Industrial	Environmental Protection	Agriculture	Other
Transportation and Distribution system (Gravity & Pressure System)	Disposal of effluents, chemicals and treated / untreated water	Underground drainage and sewerage application / rehabilitation of existing sewers.	Column piping for submersible and jet pumps.	Transportation of chemicals, solids, gas and oils.
House service connection for municipal water bodies and SEZ layout's.	As hydro transport system for handling and conveyance of iron, coal and cement slurry in mines.	Effluent and waste treatment Plants.	Suction and Delivery Pipes.	Underwater pipelines / desalination plants.
	For conveyance of edible oil fruit pulps, juice, milks and other liquid food materials.	Dust suppression piping system in cement industry.	Sprinkler irrigation system	
	As a ventilation and air conditioning duct	Sand slurry disposal pipes in dredging.	Lift irrigation	
		De-gassing pipes in water effluent marine outfalls.	Insecticide spraying	

#### HDPE FITTINGS

We supply complete range of HDPE Fittings like Blind Flange, Slipon Flange, Flange with all Standards required by clients (i.e. D Table, F Table, E Table, ASA 150# etc), Stub End, Short Neck Pipe end, Long Neck Pipe End, Tail Piece, Equal Tee, Elbow / Bend.





**Standard dimension ratio (SDR) and corresponding wall thicknesses of pipes as per IS 4984:2016**

SDR	SDR 41	SDR 33	SDR 26	SDR 21	SDR 17	SDR 13.6	SDR 11	SDR 9	SDR 7.4	SDR 6												
Nominal Pressure (PN) Bar																						
	PN 2		PN 2.5		PN 3.2		PN 4		PN 5		PN 6		PN 8		PN 10		PN 12.5		PN 16		PN 20	
PE 63	PN 2.5	PN 3.2	PN 4	PN 5	PN 6	PN 8	PN 10	PN 12.5	PN 16	PN 20												
PE 80	PN 3	PN 4	PN 5	PN 6	PN 8	PN 10	PN 12.5	PN 16	PN 20													
PE 100	Min	Max	Min	Max	Min	Max	Min	Max	Min	Max	Min	Max	Min	Max	Min	Max	Min	Max	Min	Max	Min	Max
16	-	-	-	-	-	-	-	-	-	-	-	-	-	-	-	-	-	-	-	-	-	-
20	-	-	-	-	-	-	-	-	-	-	-	-	-	-	-	-	-	-	-	-	-	-
25	-	-	-	-	-	-	-	-	-	-	-	-	-	-	-	-	-	-	-	-	-	-
32	-	-	-	-	-	-	-	-	-	-	-	-	-	-	-	-	-	-	-	-	-	-
40	-	-	-	-	-	-	-	-	-	-	-	-	-	-	-	-	-	-	-	-	-	-
50	-	-	-	-	-	-	-	-	-	-	-	-	-	-	-	-	-	-	-	-	-	-
63	-	-	-	-	-	-	-	-	-	-	-	-	-	-	-	-	-	-	-	-	-	-
75	1.9	2.2	2.3	2.6	2.9	3.3	3.6	4.1	4.5	5.1	5.6	6.3	6.9	7.7	8.4	9.3	10.2	11.3	12.5	13.9	15.7	17.8
90	2.2	2.5	2.8	3.2	3.5	4.0	4.3	4.8	5.3	5.9	6.7	7.5	8.2	9.1	10.0	11.1	12.2	13.5	15.0	16.6	18.7	21.2
110	2.7	3.1	3.4	3.8	4.3	4.8	5.9	6.6	7.3	8.1	9.0	10.0	11.1	12.3	13.6	14.9	16.5	18.4	20.3	22.6	25.2	28.1
125	3.1	3.5	3.8	4.3	4.8	5.4	6.0	6.7	7.4	8.2	9.2	10.2	11.4	12.7	13.9	15.4	16.9	18.7	20.9	23.1	25.8	28.8
140	3.5	4.0	4.3	4.8	5.4	6.0	6.7	7.5	8.3	9.2	10.3	11.4	12.8	14.2	15.6	17.3	19.0	21.0	23.4	25.8	28.8	32.0
160	3.9	4.4	4.9	5.5	6.2	6.9	7.7	8.6	9.5	10.6	11.8	13.1	14.6	16.2	17.8	19.7	21.7	24.0	26.7	29.5	32.8	36.1
180	4.4	4.9	5.5	6.2	7.0	7.8	8.6	9.6	10.6	11.8	13.3	14.7	16.4	18.1	20.0	22.1	24.4	26.9	30.0	33.1	36.6	40.0
200	4.9	5.5	6.1	6.8	7.7	8.6	9.6	10.7	11.8	13.1	14.7	16.3	18.2	20.1	22.3	24.6	27.1	29.9	33.4	36.8	40.6	44.1
225	5.5	6.2	6.9	7.7	8.7	9.7	10.8	12.0	13.3	14.7	16.6	18.4	20.5	22.7	25.0	27.6	30.5	33.7	37.5	41.4	45.7	50.0
250	6.1	6.8	7.6	8.5	9.7	10.8	12.0	13.3	14.7	16.3	18.4	20.3	22.8	25.2	27.8	30.7	33.8	37.3	41.7	46.0	50.9	55.4
280	6.9	7.7	8.5	9.5	10.8	12.0	13.4	14.8	16.5	18.3	20.6	22.8	25.5	28.2	31.2	34.4	37.9	41.8	46.7	51.5	56.7	61.6
315	7.7	8.6	9.6	10.7	12.2	13.5	15.0	16.6	18.6	20.6	23.2	25.6	28.7	31.7	35.0	38.6	42.6	47.0	52.5	57.9	63.4	68.9
355	8.7	9.7	10.8	12.0	13.7	15.2	16.9	18.7	20.9	23.1	26.1	28.8	32.3	35.6	39.5	43.6	48.0	52.9	59.2	65.2	71.0	76.9
400	9.8	10.9	12.2	13.5	15.4	17.0	19.1	21.1	23.6	26.1	29.5	32.6	36.4	40.1	44.5	49.1	54.1	59.6	66.7	73.5	80.4	86.9
450	11.0	12.2	13.7	15.2	17.3	19.1	21.5	23.8	26.5	29.3	33.1	36.5	40.9	45.1	50.0	55.1	60.9	67.1	75.0	82.6	90.4	98.3
500	12.2	13.5	15.2	16.8	19.3	21.3	23.9	26.4	29.5	32.6	36.8	40.6	45.5	50.2	55.6	61.3	67.6	74.5	83.4	91.8	100.8	109.8
560	13.7	15.2	17.0	18.8	21.6	23.9	26.7	29.5	33.0	36.4	41.2	45.4	50.9	56.1	62.3	68.6	75.7	83.4	93.4	102.8	112.8	122.8
630	15.4	17.0	19.1	21.1	24.3	26.8	30.0	33.1	37.1	40.9	46.4	51.1	57.3	63.1	70.0	77.1	85.2	93.8	105.0	115.6	126.6	137.6



## HDPE PIPES

### HDPE PIPES FOR SEWERAGE CONFORMING TO IS 14333

To fulfill the various requirements of drainage, sewerage and industrial sector. These pipes are suitable for gravity and pressurized applications. PE pipes are considered to be the most useful for undulating terrains.

#### FEATURES

- High reliability and proven service performance
- High impact and abrasion resistance
- Superior hydrostatic strength and excellent flow characteristics
- Excellent chemical and corrosion resistance
- Easy, quick and economical installation
- Outstanding flexibility and crush resistance
- Excellent weld-ability - Butt welded joining provides leakfree monolithic pipe systems
- Does not support microbial growth
- Excellent water hammer resistance
- Deal in shifting soil condition and earthquake prone areas
- UV Stabilized - Provides protection from ultra violet Sunrays which makes it suitable for exposed application.

DIMENSIONS OF HDPE PIPE - PE 63 (IS 14333)														
Dia. DN.	PN 2.5		PN 4		PN 6		PN 8		PN 10		PN 12.5		PN 16	
	Min.	Max.	Min.	Max.	Min.	Max.	Min.	Max.	Min.	Max.	Min.	Max.	Min.	Max.
63	-	-	4.0	4.6	5.8	6.7	7.5	8.5	9.0	10.1	10.9	12.2	13.3	14.9
75	3.0	3.5	1.7	5.4	6.9	7.8	8.9	10.0	10.8	12.1	13.0	14.5	15.8	17.6
90	3.6	4.2	5.7	6.5	8.2	9.3	10.6	11.9	12.9	14.4	15.6	17.4	19.0	21.1
110	4.4	5.1	6.9	7.8	10.0	11.2	13.0	14.5	15.8	17.6	19.0	21.1	23.2	25.8
125	5.0	5.7	7.9	8.9	11.4	12.8	14.8	16.5	17.9	19.9	21.6	24.0	26.4	29.3
140	5.6	6.4	8.8	9.9	12.8	14.3	16.5	18.4	20.0	22.2	24.0	26.4	29.5	32.7
160	6.4	7.3	10.0	11.2	14.6	16.3	18.9	21.0	22.9	25.4	27.6	30.6	33.7	37.3
180	7.2	8.2	11.3	12.7	16.4	18.3	21.2	23.6	25.8	28.6	31.1	34.5	37.9	41.9
200	8.0	9.0	12.5	14.0	18.3	20.3	23.6	26.2	28.6	31.7	34.5	38.2	45.2	46.7
225	9.0	10.1	14.1	15.8	20.5	22.8	26.5	29.4	32.2	35.7	38.8	42.9	47.4	52.4
250	10.0	11.2	15.7	17.5	22.8	25.3	29.5	32.7	35.8	39.6	43.2	47.8	52.7	58.2
280	11.2	12.6	17.5	19.5	25.5	28.3	33.0	36.5	40.0	44.2	48.3	53.4	-	-
315	12.6	14.1	19.7	21.9	28.7	31.8	37.1	41.1	45.0	49.7	54.4	60.1	-	-
355	14.2	15.9	22.2	24.7	32.3	35.8	41.8	46.2	50.8	56.1	-	-	-	-
400	16.0	18.6	25.0	29.0	36.4	42.1	47.1	54.4	57.2	66.0	-	-	-	-
450	18.0	20.9	28.2	32.7	41.0	47.4	53.0	61.2	-	-	-	-	-	-
500	20.0	23.2	31.3	36.2	45.5	52.6	-	-	-	-	-	-	-	-
560	22.4	26.0	35.0	40.5	51.0	58.9	-	-	-	-	-	-	-	-
630	25.2	29.2	39.4	45.6	57.3	66.1	-	-	-	-	-	-	-	-

## HDPE PIPES

**DIMENSIONS OF HDPE PIPE - PE 80 (IS 14333)**

Dia. DN.	PN 2.5		PN 4		PN 6		PN 8		PN 10		PN 12.5		PN 16	
	Min.	Max.	Min.	Max.	Min.	Max.	Min.	Max.	Min.	Max.	Min.	Max.	Min.	Max.
63	-	-	3.0	3.5	4.4	5.1	5.8	6.6	7.0	7.9	8.6	9.7	10.5	11.8
75	2.3	2.8	3.6	4.2	5.3	6.1	6.9	7.8	8.4	9.5	10.2	11.5	12.5	14.0
90	2.8	3.3	4.3	5.0	6.3	7.8	8.2	9.3	10.0	11.2	12.2	13.7	15.0	16.7
110	3.4	1.0	5.3	6.1	7.7	8.7	10.0	11.2	12.3	13.8	14.9	16.6	18.4	20.5
125	3.8	1.4	6.0	6.8	8.8	9.9	11.4	12.8	13.9	15.5	16.9	18.8	20.9	23.2
140	4.3	5.0	6.7	7.6	9.8	11.0	12.8	14.3	15.6	17.4	19.0	21.1	23.4	26.0
160	4.9	5.6	7.7	8.7	11.2	12.6	14.6	16.3	17.8	19.8	21.7	24.1	26.7	29.6
180	5.5	6.3	8.6	9.7	12.6	14.1	16.4	18.3	20.0	22.2	24.1	27.1	30.1	33.2
200	6.1	7.0	9.6	10.8	14.0	15.6	18.2	20.3	22.3	24.8	27.1	30.1	33.4	37.0
225	6.9	7.8	10.8	12.1	15.7	17.5	20.5	22.8	25.0	27.7	30.5	33.8	37.8	41.5
250	7.6	8.6	12.0	13.4	17.5	19.5	22.8	25.3	28.7	30.8	33.8	37.4	41.7	46.1
280	8.5	9.6	13.4	15.0	19.6	21.8	25.5	28.3	31.2	34.6	37.9	41.9	46.7	51.6
315	9.6	10.8	15.0	16.7	22.7	24.4	28.7	31.8	35.0	38.7	42.6	47.1	52.5	58.0
355	10.8	12.1	17.0	18.9	24.8	27.5	32.3	35.8	39.5	43.7	48.0	53.0	59.2	65.4
400	12.2	14.3	19.1	22.2	28.0	32.4	36.4	42.1	44.5	51.4	54.1	62.5	-	-
450	13.7	16.0	21.5	25.0	31.4	36.4	41.0	47.4	50.0	57.7	-	-	-	-
500	15.2	17.7	23.9	27.7	34.9	40.4	45.5	52.6	55.6	64.2	-	-	-	-
560	17.0	19.8	26.7	31.0	39.1	45.2	51.0	58.9	-	-	-	-	-	-
630	19.1	22.2	30.0	34.7	44.0	50.8	57.3	66.1	-	-	-	-	-	-

**DIMENSIONS OF HDPE PIPE - PE 100 (IS 14333)**

Dia. DN.	PN 6		PN 8		PN 10		PN 12.5		PN 16	
	Min.	Max.	Min.	Max.	Min.	Max.	Min.	Max.	Min.	Max.
63	3.6	4.2	4.7	5.4	5.8	6.6	7.0	7.9	8.7	9.8
75	4.3	5.0	5.6	6.4	6.9	7.8	8.4	9.5	10.4	11.7
90	5.1	5.9	6.7	7.6	8.2	9.3	10.0	11.2	12.5	14.0
110	6.3	7.2	8.2	9.3	10.0	11.2	12.3	13.8	15.2	17.0
125	7.1	8.1	9.3	10.5	11.4	12.8	13.9	15.5	17.3	19.3
140	8.0	9.0	10.4	11.7	12.8	14.3	15.6	17.4	19.4	21.6
160	9.1	10.3	11.9	13.3	14.6	16.3	17.8	19.8	22.1	24.6
180	10.2	11.5	13.4	15.0	16.4	18.3	20.0	22.2	24.9	27.6
200	11.4	12.8	14.9	16.0	18.2	20.3	22.3	24.8	27.6	30.6
225	12.8	14.3	16.7	18.6	20.5	22.8	25.0	27.7	31.4	34.5
250	14.2	15.9	18.6	20.7	22.8	25.3	27.8	30.8	34.5	38.2
280	15.9	17.7	20.8	23.1	25.5	28.3	31.2	34.6	38.7	42.8
315	17.9	19.9	23.4	26.0	28.7	31.8	35.0	38.7	43.5	48.1
355	20.1	22.4	26.3	29.2	32.3	35.8	39.5	43.7	49.0	54.1
400	22.7	26.4	29.7	34.4	36.4	42.1	44.5	51.4	55.2	63.7
450	25.5	29.6	33.4	38.7	41.0	47.4	50.0	57.7	-	-
500	28.4	32.9	37.1	42.9	45.5	52.6	55.6	64.2	-	-
560	31.7	36.7	41.5	48.0	51.0	58.9	-	-	-	-
630	35.7	41.3	46.7	54.0	57.3	68.1	-	-	-	-

## HDPE PIPES

### HDPE SPRINKLER PIPES & FITTINGS FOR IRRIGATION CONFORMING TO **IS 14151 (PART-1) & 14151 (PART-2)**

With increasing demand of food grains and field crops and with lower availability of water, a sprinkler system is used now a days for a much efficient use of water for irrigation. This primarily is a system of spraying of water through nozzles (sprinklers). Keeping in step with technology and the market demand, we offer quality HDPE quick coupled pipes, fittings and accessories for sprinkler irrigation. This system can be used in even in undulating fields with excellent results and is useful for almost all types of soils and crops. The system, while helping in reducing the requirement of water for irrigation, effectively prevents soil erosion.

#### FEATURES

- More than 40% water saving in comparison to flood irrigation.
- Well suited for irrigation of undulating fields-levelling of land is not required.
- Portable, light weight and easy to handle.
- Extensive saving in transportation and labor cost.
- Easy and quick installation by using coupler type joint provided with pipes and fittings.
- Excellent corrosion resistant properties.
- UV Stabilized - Provides protection from ultra violet sun rays which makes it suitable for exposed application.
- Highly flexible, crack and impact proof - sustains high pressures and high temperatures.
- Chemically inert - Makes it suitable for liquid fertilizers and pesticides.
- Strong, durable and long lasting.
- Cost effective.

#### APPLICATIONS

Suitable for almost all crops like wheat, gram, pulses, vegetables, cotton, tea, coffee and field crops like hay, corn and soybean. It is also suitable for gardens maintained in residences, industries, hotels, resorts, public and government premises as also large green patches like the golf and race courses.





# HDPE PIPES

## HDPE SPRINKLER PIPES & FITTINGS FOR IRRIGATION CONFORMING TO IS 14151 (PART-1) & 14151 (PART-2)

Nominal Size (MM)	OUTER DIAMETER (MM)		DIMENSIONS							
			CLASS 1		CLASS 2		CLASS 3		CLASS 4	
			MIN.	MAX.	MIN.	MAX.	MIN.	MAX.	MIN.	MAX.
50	50.0	50.5	-	-	-	-	2.00	2.40	2.9	3.8
63	63.0	63.6	-	-	2.00	2.40	2.50	2.90	3.8	4.4
75	75.0	75.7	2.00	2.40	2.50	2.90	3.00	3.40	4.5	5.2
90	90.0	90.8	2.20	2.60	2.90	3.40	3.50	4.10	5.3	6.1
110	110.0	111.0	2.70	3.20	3.40	3.90	4.20	4.80	6.5	7.4



## HDPE PIPES

### PERMANENTLY LUBRICATED (PLB) HDPE DUCT FOR USE AS UNDER GROUND OPTICAL FIBRE CABLE CONDUIT

#### AS PER TEC & RDSO SPECIFICATION

The Permanently-Lubricated HDPE Telecom Duct consists of two concentric layers, the outer layer being HDPE; co-extruded with an inner layer of solid permanently lubricant which is distributed uniformly along the entire inner surface of the duct to drastically reduce the Internal Co-efficient of Friction (ICF). These Telecom Ducts with smooth inner surface facilitate easy insertion of Cable manually or by blowing technique and provide total protection to optical fiber cable, co-axial cables and electric power cable during and after installation. The Optical Fibre Cables used for Telecommunications being very delicate and sensitive, it became necessary to modify the HDPE Pipes to be used as conduits for optical fibre cables. This led to the development of Permanently Lubricated (PLB) HDPE Telecom Ducts.

The ducts are made in 8 colors such as Green, Orange, Blue, Yellow, Brown, Violet, Grey and Red.

	32 (MM) /26 (MM)	40 (MM) / 33 (MM)	50 (MM) /42 (MM)	63 (MM) / 50 (MM)	110 (MM) /80 (MM)
Outside diameter	32 mm +0.3 mm -0.0 mm	40 mm + 0.4 mm - 0.0 mm	50 mm + 0.5 mm - 0.0 mm	63 mm + 0.6 mm - 0.0 mm	110 mm + 1.0 mm +0.0 mm
Wall thickness	3.0 mm ± 0.2 mm	3.5 mm ± 0.2 mm	4 mm ± 0.3 mm	6.5 mm ± 0.40 mm	15.0 mm ± 0.60 mm
Thickness of the Inner Layer	Minimum 0.24 mm Maximum 0.36mm	Minimum 0.28 mm Maximum 0.42 mm	Minimum 0.32 mm Maximum 0.48 mm	Minimum 0.36 mm Maximum 0.54 mm	Minimum 0.56 mm Maximum 0.84 mm
Standard length	1000 ± 100 meters	1000 ± 100 meters	1000 ± 100 meters	500 meters ± 50 meters	100 meters ± 10 meters
Maximum outer dia-meter of cable that can be installed by blowing technique.	12 mm	16 mm	21 mm	25 mm (144 fibres)	40 mm (576 Fibres)

#### FEATURES

- Ducts being very light in weight hence offer low transportation costs and easy handling.
- Longer and easier cable installation reducing the cost of attachments.
- Saving of manpower.
- Reduced co- efficient of friction.
- Overcoming difficult field and extreme environmental conditions.
- it can be delivered in continuous length.
- Cost effective repairs and upgrading.



## POLYETHYLENE PIPES FOR THE SUPPLY OF GASEOUS FUELS CONFORMING TO IS 14885

MDPE pipe is an excellent choice due its proven track record of providing longevity and reliability in gas piping systems.

Traditionally these pipes are identified by its color for different uses like blue for water, orange for petrol, and yellow for gas lines. Due to inherent characteristics of MDPE (GAS PIPE) such as corrosion, resistance, flexibility, crack resistance and toughness, MDPE (GAS PIPE) pipes are used widely in the gas distribution system.

### FEATURES

- Specification conforming to IS-14885 & ISO 4437 - SDR17.6, 13.6, 11 & 9.
- Manufactured from virgin high performing special grade raw material PE-80 & PE-100.
- Minimum required strength (MRS) of 8 MPa & 10 MPa.
- Suitable for working pressure up to 7.0 bar.
- 50, 100 and 150m coils up to size 110mm.
- 6m length on all sizes above 110mm.
- High resistance to chemical reaction.
- Easy handling and jointing leading to reduced cost.
- Outstanding ability to withstand Rapid Crack propagation (RCP).
- High resistance to Crack Growth.
- Very high abrasion resistances.

DIMENSIONS OF MDPE PIPE AS PER IS 14885										
SDR			SDR 17.6		SDR 13.6		SDR 11		SDR 9	
NOMINAL OD		QUALITY	WALL THICKNESS		WALL THICKNESS		WALL THICKNESS		WALL THICKNESS	
MIN. OD	MAX. OD	MAX.	MIN.	MAX.	MIN.	MAX.	MIN.	MAX.	MIN.	MAX.
16	17.1	1.1	2.3	2.7	2.3	2.7	3.0	3.4	3.0	3.4
20	21.2	1.2	2.3	2.7	2.3	2.7	3.0	3.4	3.0	3.4
25	26.2	1.2	2.3	2.7	2.3	2.7	3.0	3.4	3.0	3.4
32	33.3	1.3	2.3	2.7	2.3	2.7	3.0	3.4	3.6	4.1
40	41.3	1.3	2.3	2.7	3.0	3.4	3.7	4.2	4.5	5.1
50	51.4	1.4	2.9	3.3	3.7	4.2	4.6	5.2	5.6	6.3
63	64.5	1.5	3.6	4.1	4.7	5.3	5.8	6.5	7.1	8.0
75	76.6	1.6	4.3	4.9	5.5	6.2	6.8	7.6	8.4	9.4
90	91.8	1.8	5.2	5.9	6.6	7.4	8.2	9.2	10.1	11.3
110	112.2	2.2	6.3	7.1	8.1	9.1	10.0	11.1	12.3	13.7
125	127.5	2.5	7.1	8.0	9.2	10.3	11.4	12.7	14.0	15.5
140	142.8	2.8	8.0	9.0	10.3	11.5	12.7	14.1	15.7	17.4
160	163.2	3.2	9.1	10.2	11.8	13.1	14.6	16.2	17.9	19.8
180	183.6	3.6	10.3	11.5	13.3	14.8	16.4	18.2	20.1	22.3
200	204.0	4	11.4	12.7	14.7	16.3	18.2	20.2	22.4	24.8
225	229.5	4.5	12.8	14.2	16.6	18.4	20.5	22.7	25.1	27.8
250	255.0	5	14.2	16.4	18.4	20.4	22.7	25.1	27.9	30.8
280	285.6	5.6	16.0	17.7	20.6	22.8	25.4	28.1	31.3	34.6
315	321.3	6.3	17.9	19.8	23.2	25.7	28.6	31.6	35.2	38.9





### POLYPROPYLENE (PPR) PIPES FOR THE SUPPLY OF HOT AND COLD WATER CONFORMING TO **IS 15801**

PPR pipes and fittings are manufactured using Polypropylene Random Copolymer (PP-RC), which is the most reliable polymer in the piping system industry. The superior physical characteristics of PPR Pipes such as having a working temperature from -20° C to 95°C, along with excellent chemical resistance, providing a definite solution to oxidation and calcification, make PPR Piping Systems ideal primarily for chemical transportation, in pharmaceutical companies and for other industrial use, as well as, hot & cold water plumbing systems in buildings and industrial piping.

#### FEATURES

- UV-stabilized outer layer, PP-RC middle layer, Anti-microbial inner layer.
- PPR Pipes and fittings are non-corrosive, leakproof and frost proof.
- PPR Piping Systems can endure high impact and pressure, which minimizes structural damages like a diametric contraction.
- PPR Piping System can easily last up to 50 years without any servicing requirements.
- PPR Pipes have a smooth inner surface, thus, reducing the operational pressure required by the motor pump.
- PPR is resistant to high temperatures; up to 95°C.
- PPR piping systems are heat preserving and energy saving.
- PPR and Fittings have a smooth inner surface and are scale-free, hence, odor-free.
- PP-RC material can work in both acidic and basic solutions; hence shows no reaction with salts and acids.
- Its UV stabilized, which prevents the sun rays to degrade or destruct the material resulting in long operational life.

#### APPLICATION

- Piping system for the transportation of aggressive fluids in industries
- Pharmaceuticals
- The compressed air supply system
- Transportation of drinking water and liquid food
- Indoor as well as outdoor hot & cold water piping system
- Solar water heating systems
- The heating system inside buildings including floor, wall, and radiator heating

**Pipe Size :** 20mm to 160 mm

**Pressure Ratings :** PN 10 kg/cm<sup>2</sup>, PN 12.5 kg/cm<sup>2</sup>, PN 16 kg/cm<sup>2</sup>, PN 20 kg/cm<sup>2</sup>.

**Range of PPR Fittings :** Flange (Step Flange , Long Neck Flange), Long Neck Collar, Elbow 90°, Elbow 45°, Male Threaded Elbow, Female Threaded Elbow, Tee, Reducing Tee, Male Threaded Tee, Female Threaded Tee, Coupler, Male Threaded Adaptor, Female Threaded Adaptor, Reducer, End Cap, Union, Four Way Tee etc.



# **PVC PIPES & FITTINGS**

---



### uPVC PIPE FOR POTABLE WATER SUPPLY CONFORMING TO **IS 4985**

VPL offers an exhaustive range of uPVC pressure pipes and fittings. Pressure pipes are manufactured as per IS:4985-2000 standards and are available in 20 to 400mm sizes in different pressure classes. Pipes with both types of joints, i.e. Solvent cement type and rubber seal type are available. Moulded fittings are manufactured as per IS:7834 and fabricated fittings are manufactured as per IS:10124 and company standards.

These pipes and fittings are used for a variety of applications like, irrigation, water supply, industrial process lines, swimming pools, firefighting mains, etc. These pipes are superior to CI, DI or RCC pipes in terms of being light in weight, easier and quicker installation, excellent corrosion and chemical resistance properties, high flow rates, long life and economy.

#### FEATURES

- Odorless and hygienic - These pipes are an excellent choice for carrying potable water as they do not allow contamination.
- High corrosion resistance - Being immune to chemical, electrolytic and galvanic action, these pipes are free from corrosion which ensures a much longer and useful life.
- High chemical resistance - Pipes offer excellent resistance to acids, oxidizing agents, alkalis, oils and domestic effluents.
- Smooth bore - Pipes have a mirror smooth inside surface offering much better flow characteristics in comparison to AC, CI and GI pipes.
- Self extinguishing quality - This feature eliminates the need for fire resistant coatings.
- Maintenance free - Corrosion resistant property of the PVC pipes eliminates the need for repeated painting or coating like in the case of GI pipes.
- Long lasting - As these pipes are free from weaknesses caused by scale formation, rusting, weathering and chemical action, they have a much longer effective life.
- Economical - Despite being superior to conventional pipes, PVC pipes are very light in weight and last much longer than older piping systems offering a great economy in handling, transportation, installation and replacement.





DIMENSION OF UPVC PIPES CONFIRMING TO IS 4985

Nominal Outside Diameter (Nominal Size)	Means Outside Diameter		Outside Diameter at Any Point		Class 1 0.25			Class 2 0.40			Class 3 0.60			Class 4 0.80			Class 5 1.00			Class 6 1.25		
	Min	Max	Min	Max	Avg.	Min	Max	Avg.	Min	Max	Avg.	Min	Max	Avg.	Min	Max	Avg.	Min	Max	Avg.	Min	Max
(1)	(2)	(3)	(4)	(5)	(6)	(7)	(8)	(9)	(10)	(11)	(12)	(13)	(14)	(15)	(16)	(17)	(18)	(19)	(20)	(21)	(22)	(23)
20	20.0	20.3	19.5	20.5	-	-	-	-	-	-	-	-	-	-	-	-	1.5	1.1	1.5	1.8	1.4	1.8
25	25.0	25.0	24.5	25.8	-	-	-	-	-	-	-	-	-	1.6	1.2	1.6	1.8	1.4	1.8	2.1	1.7	2.1
32	32.0	32.3	31.5	32.5	-	-	-	-	-	-	-	-	-	1.9	1.5	1.9	2.2	1.8	2.2	2.7	2.2	2.7
40	40.0	40.3	39.5	40.5	-	-	-	-	-	-	1.8	1.4	1.8	2.2	1.8	2.2	2.7	2.2	2.7	3.3	2.8	3.3
50	50.0	50.3	49.4	50.6	-	-	-	-	-	-	2.1	1.7	2.1	2.8	2.3	2.8	3.3	2.8	3.3	4.0	3.4	4.0
63	63.0	63.3	62.2	63.8	-	-	-	1.9	1.5	1.9	3.7	2.2	2.7	3.3	2.8	3.3	4.1	3.5	4.1	5.0	4.3	5.0
75	75.0	75.3	74.1	75.9	-	-	-	2.2	1.8	2.2	3.1	2.6	3.1	4.0	3.4	4.0	4.9	4.2	4.9	5.9	5.1	5.9
90	90.0	90.3	88.9	91.1	1.7	1.3	1.7	2.6	2.1	2.6	3.7	3.1	3.7	4.6	4.0	4.6	5.7	5.0	5.7	7.0	6.1	7.1
110	110.0	110.4	108.6	111.4	2.0	1.6	2.0	3.0	2.5	3.0	4.3	3.7	4.3	5.6	4.9	5.6	7.0	6.1	7.1	8.5	7.5	8.7
125	125.0	125.4	123.5	126.5	2.2	1.8	2.2	3.4	2.9	3.4	5.0	4.3	5.0	6.4	5.6	6.4	7.8	6.9	8.0	9.6	8.5	9.8
140	140.0	140.5	138.3	141.7	2.4	2.0	2.4	3.8	3.2	3.8	5.5	4.8	5.5	7.2	6.3	7.3	8.7	7.7	8.9	10.7	9.5	11.0
160	160.0	160.5	158.0	162.0	2.8	2.3	2.8	4.3	3.7	4.3	6.3	5.4	6.2	8.2	7.2	8.3	9.9	8.8	10.2	12.2	10.9	12.6
180	180.0	180.6	177.8	182.2	3.1	2.6	3.1	4.9	4.2	4.9	7.0	6.1	7.1	9.0	8.0	9.2	11.1	9.9	11.4	13.7	12.2	14.1
200	200.0	200.6	197.6	202.4	3.4	2.9	3.4	5.3	4.6	5.3	7.7	6.8	7.9	10.0	8.9	10.3	12.3	11.0	12.7	15.2	13.6	15.7
225	225.0	225.7	222.3	227.7	3.9	3.3	3.9	6.0	5.2	6.0	8.6	7.6	8.8	11.2	10.0	11.5	13.9	12.4	14.3	17.1	15.3	17.6
250	250.0	250.8	247.0	253.0	4.2	3.6	4.2	6.5	5.7	6.5	9.6	8.5	9.8	12.4	11.2	12.9	15.4	13.8	15.9	18.9	17.0	19.6
280	280.0	280.9	276.6	283.4	4.8	4.1	4.8	7.3	6.4	7.4	10.7	9.5	11.0	14.0	12.5	14.9	17.2	15.4	17.8	21.1	19.0	21.9
315	315.0	316.0	311.2	318.8	5.3	4.6	5.3	8.2	7.2	8.3	12.0	10.7	12.4	15.6	14.0	16.1	19.3	17.3	19.9	23.8	21.4	24.7
355	355.0	356.1	350.7	359.3	5.9	5.1	5.9	9.2	8.1	9.4	13.4	12.0	13.8	17.6	15.8	18.2	21.8	19.6	22.6	26.8	24.1	27.8
400	400.0	401.2	395.2	404.8	6.6	5.8	6.7	10.3	9.1	10.5	15.1	13.5	15.6	19.8	17.8	20.5	24.4	22.0	25.3	30.2	27.2	31.3
450	450.0	451.4	444.6	455.4	7.4	6.5	7.5	11.6	10.3	11.9	17.0	15.2	17.5	22.2	20.0	23.0	27.5	24.8	28.6	33.8	30.5	35.1
500	500.0	501.5	494.0	506.0	8.2	7.2	8.3	12.8	11.4	13.2	18.8	16.9	19.5	24.8	22.3	25.7	30.5	27.5	31.7	37.5	33.9	39.0
560	560.0	561.7	553.2	566.8	9.2	8.1	9.4	14.3	12.8	14.8	21.0	18.9	21.8	27.6	24.9	28.7	34.1	30.8	35.5	42.0	38.0	43.7
630	630.0	631.9	622.4	637.6	10.3	9.1	10.5	16.1	14.4	16.6	23.7	21.1	24.5	31.0	28.0	32.2	38.4	34.7	40.0	47.2	42.7	49.2



## PVC PIPE

### uPVC SCREEN & CASING PIPES FOR BORE / TUBEWELL CONFORMING TO **IS12818**

VPL offers variety of casing pipes along with the required accessories to complete the bore well system requirements in all respect. Manufactured using latest material and technology, these pipes are completely free from the problems associated with the conventional metal pipes. These pipes are rigorously tested to suit the specific application requirements. These casing pipes offers superior performance at a lower cost which makes them the preferred choice of the quality conscious customers across the country.

#### FEATURES

Excellent corrosion resistant - Unlike metal pipes, uPVC casing pipes are completely immune to corrosion and offer good resistance to aggressive elements in the soil which could cause encrustation of well screens.

Quick and convenient installation- These pipes can be easily assembled and installed using threaded joints. These pipes are suitable where drilling is done by hand, with light weight drilling rig or even with large capacity drilling machines.

Excellent strength and stiffness - These pipes have excellent stiffness and meet all the mechanical properties as per IS:12818. They have excellent hydrostatic collapse pressure that is capable of withstanding the external hydraulic pressure which these pipes would be subjected to during construction of the well.

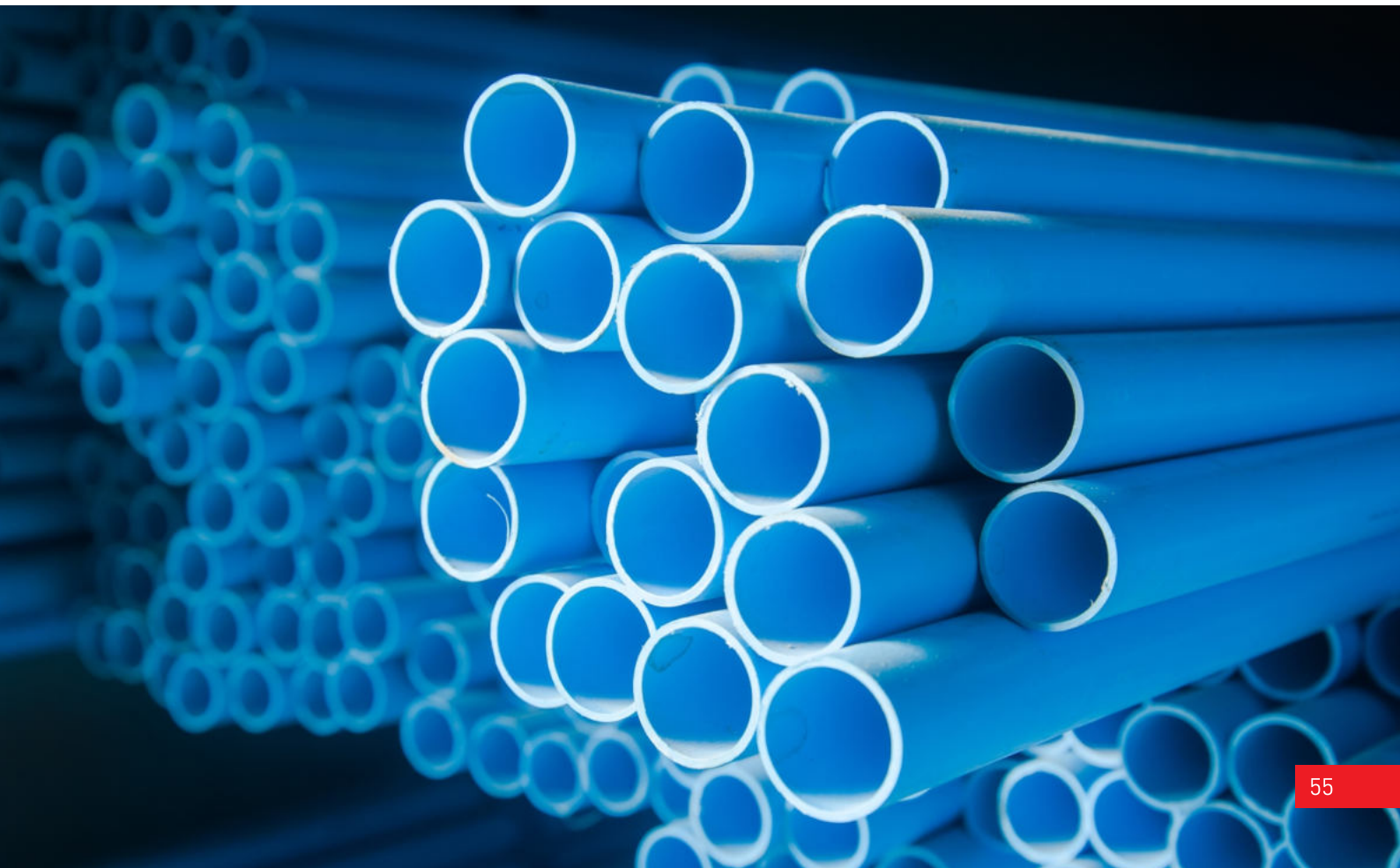
Non-toxic - The material of the pipe is non-toxic and hence

does not impart any taste, odour or colour to water. It also does not release any harmful substance in the water which could pose health problems. It also resists bacteria, making it completely safe for drinking water.

Non-conductive - uPVC is a non-conductor of electricity eliminating any electro chemical reaction with ground water which could cause encrustation of screens.

Long lasting - As the material is free from rusting, weathering and chemical reactions and with excellent mechanical properties, Supreme casing pipes last a lifetime.

Economical - Apart from all the advantages listed above, uPVC casing pipes and screens are the most economical bore-well solution as compared to other materials or even alternative uPVC casing pipes available in the market.

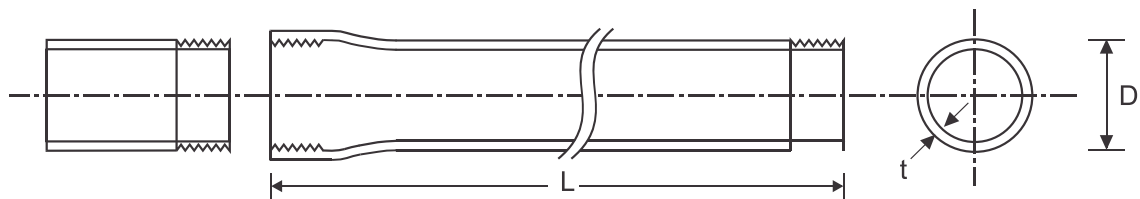


## PVC PIPE

These pipes are manufactured as per BIS standards (IS 12818) and are available in deep blue colour. One end of the pipe is male threaded where as other end is a female threaded socket.

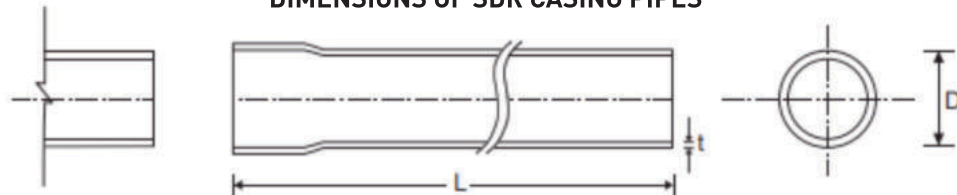
Threads are either 'V' type or trapezoid type and protection caps are provided on the threads to protect the threads in transit. Two types of pipes viz. Shallow Well (C.S.) and Medium Well (C.M.) are available. Shallow well pipes can be used for depths up to 80 m and medium well pipes can be used up to 250 m of depth.

**DIMENSIONS OF CASING PIPES**



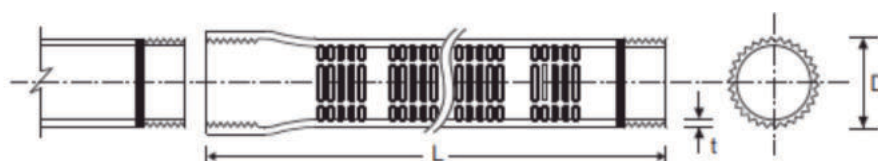
These economical pipes, manufactured as per company standards and are suitable for shallow depths where soil formation is favorable. Use of these pipes for a particular application needs to be examined on case to case basis. One end of the pipe is plain where as other end is socketed for solvent weld joint. These pipes are available in blue colour.

**DIMENSIONS OF SDR CASING PIPES**



These pipes are provided with 'V' shape ribs on its exterior surface. The special design of this structure with fine slots provided on the pipes, prevent entry of even small particles and hence permeability of the screen is maintained. These pipes are generally used in combined wells or used for specific formation where normal screen pipes do not work e.g. fine sand. These pipes are provided with male and female threaded ends.

**DIMENSIONS OF RIBBED SCREEN CASING PIPES**



## PVC PIPE

### DIMENSION OF MEDIUM WELL CASING 'CM' PIPES

SIZE (MM)	O.D		INCHES	OD OVER CONNECTION ON MAX.	THICKNESS	
	MIN. OD	MAX. OD			MIN.	MAX.
35	42	42.2	1"	46	3.50	4.00
40	48	48.2	1 1/2"	52	3.50	4.00
50	60	60.2	2"	65	4.00	4.60
80	88	88	3"	94	4.00	4.60
100	113	113.3	4"	120	5.00	5.70
115	125	125.3	4 1/2"	132	5.00	5.70
125	140	140.4	5"	150	6.50	7.30
150	165	165.4	6"	178	7.50	8.50
170	200	200.5	7"	215	8.80	9.80
200	225	225.5	8"	243	10.00	11.20
250	280	280.5	10"	298	12.50	14.00
300	330	330.6	12"	352	14.50	16.20

### DIMENSION OF 'RMS' SCREEN PIPES WITH RIBS

SIZE (MM)	O.D		INCHES	OD OVER CONNECTION ON MAX.	THICKNESS	
	MIN. OD	MAX. OD			MIN.	MAX.
35	46	46.2	1"	50	3.50	4.00
40	52	52.2	1 1/2"	56	3.50	4.00
50	64	64.2	2"	69	4.00	4.60
80	92	92.3	3"	98	4.00	4.60
100	117	117.3	4"	124	5.00	5.70
115	129	129.3	4 1/2"	136	5.00	5.70
125	144	144.4	5"	154	6.50	7.30
150	169	169.4	6"	182	7.50	8.50
170	204	204.5	7"	219	8.80	9.80
200	229	229.5	8"	247	10.00	11.20
250	284	284.5	10"	302	12.50	14.00
300	334	334.6	12"	356	14.50	16.20



DIMENSION OF SHALLOW WELL CASING 'CS' PIPES

SIZE (MM)	O.D		INCHES	OD OVER	THICKNESS	
	MIN. OD	MAX. OD		CONNECTION ON MAX.	MIN.	MAX.
150	165	165.4	6"	174	5.70	6.50
175	200	200.5	7"	211	7.00	7.80
200	225	225.5	8"	238	7.60	8.80
250	280	280.5	10"	292	9.60	11.00
300	330	330.6	12"	346	11.20	13.30



### SCREEN / SLOTTED PIPES FOR CASING

Screen or slotted pipes are used for casing in ground water section to allow water to enter inside the well. These pipes can also be used to provide soak-ways for the storm water/rain water to infiltrate it back into surrounding areas. Thus we can recharge the ground water and prevent run off of rain water. These percolation pipes can also used in roof top rain water harvesting in the form of percolation pit, to recharge the ground water. These pipes can also be used for controlled and reduced volume of discharge of rain water into existing main sewer systems and water courses.

Dimension Details of Screen / Slots of Casing Pipes Conforming to IS 12818						
Size	No of Rows	Slot Width	Distance between slots	Slot Width	Distance Between Slots	Slot Length
35	3	0.5	6	1.5	9.5	25
40	3	0.5	6	1.5	9.5	28
50	3	0.5	6	1.5	9.5	36
80	3	0.5	6	1.5	9.5	56
100	5	0.5	6	1.5	9.5	43
115	5	0.5	5.5	1.5	8.5	48
125	5	0.5	5.5	1.5	8.5	48
150	5	0.5	5.5	1.5	8.5	57
175	5	0.5	5.5	1.5	8.5	56
200	6	0.5	5.5	1.5	8.5	65

Dimension details of screen/slots of SDR pipes/ pipes conforming to IS 4985 used as casing				
Size	No of Rows	Slot Width	Distance Between Slots	Slot Length
110	3	1.5	10	70
140	5	1.5	10	50
160	5	1.5	10	55
180	5	1.5	10	80
200	5	1.5	10	90
225	5	1.5	10	90
250	6	1.5	10	95
315	8	1.5	10	90
400	8	1.5	10	90

## PVC PIPE

### uPVC THREADED PIPES

As per **ASTM D-1785**

These pipes are manufactured as per ASTM D 1785 standard in Schedule 40, Schedule 80& Schedule 120 pressure class. It can be used for an array of applications, including: Hot and cold-water distribution in residential, commercial and industrial spaces. Carrying portable water and edible fluids Transportation of chemicals and other hot, corrosive fluids Solar heating, central heating and radiant floor heating applications.

These pipes are manufactured with two different jointing methods: Threaded joints & Solvent Cement Joints

#### FEATURES

- Stronger, resilient and longer lasting
- Excellent corrosion and chemical resistance
- Light weight, easy and fast installation
- Hygienic and safe for carrying drinking water
- Optimum flow rates
- Unaffected by termites, fungus or bacteria
- No algae formation
- 100% Leak proof joints
- No root penetration
- No galvanic action with CP and other fittings
- Bad conductor of electricity



Nominal Size		Outside Diameter (D) in (MM)	SCHEDULE 40				SCHEDULE 80				SCHEDULE 120			
			Wall Thickness (t) In (MM)	Working Pressure		Wall Thickness (t) In (MM)	Working Pressure		Wall Thickness (t) In (MM)	Working Pressure		Wall Thickness (t) In (MM)	Working Pressure	
(MM)	inch			kgf / cm2	psi		kgf / cm2	psi		kgf / cm2	psi		kgf / cm2	psi
15	1/2	21.34±0.10	2.77 + 0.51	20.7	300	3.73 + 0.51	29.0	420	4.32 + 0.51	35.2	510			
20	3/4	26.67±0.10	2.87 + 0.51	16.5	240	3.91 + 0.51	23.4	340	4.32 + 0.51	26.9	390			
25	1	33.40±0.13	3.38 + 0.51	15.5	225	4.55 + 0.53	22.1	320	5.08 + 0.61	24.8	360			
32	1 1/4	42.16±0.13	3.56 + 0.51	12.7	185	4.85 + 0.58	17.9	260	5.46 + 0.66	20.7	300			
40	1 1/2	48.26±0.15	3.68 + 0.51	11.4	165	5.08 + 0.61	16.5	240	5.72 + 0.68	18.6	270			
50	2	60.32±0.15	3.91 + 0.51	09.6	140	5.54 + 0.66	13.8	200	6.35 + 0.76	16.5	240			
65	2 1/2	75.20±0.10	5.16 + 0.61	10.3	150	7.01 + 0.48	14.5	210	7.62 + 0.91	15.9	230			
80	3	88.90±0.20	5.49 + 0.66	08.9	130	7.62 + 0.91	13.1	190	8.89 + 1.07	15.2	220			
100	4	114.30±0.23	6.02 + 0.71	07.6	110	8.56 + 1.02	11.0	160	11.10 + 1.32	15.2	220			
125	5	141.30±0.25	6.55 + 0.79	06.5	90	9.52 + 1.14	09.7	140	12.70 + 1.52	13.7	200			
150	6	168.28±0.28	7.11 + 0.86	06.5	90	10.97 + 1.32	09.7	140	14.27 + 1.70	13.1	190			
200	8	219.08±0.38	8.18 + 0.99	05.5	80	12.70 + 1.52	08.3	120	-	-	-			



### uPVC COLUMN PIPES

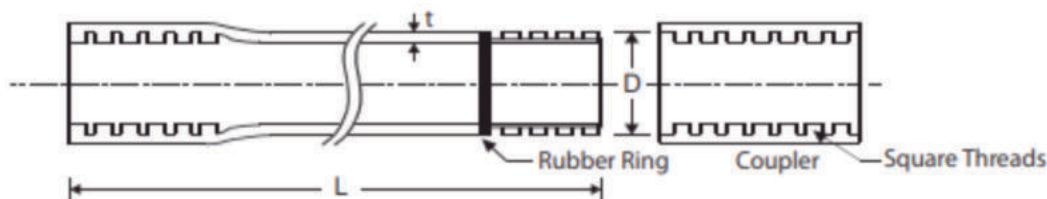
Column Pipes are manufactured with latest plant and machinery with the High-grade PVC resin with various other imported chemicals to sustain high tensile loads subjected on it by the weight of the Submersible Pump-set and vibration generated by it while running. These pipes have heavy duty square threads along with a permanently joint separate socket attached to one end of the pipe. To ensure leak proof joints high quality EPDM rubber rings are provided on both ends of the pipes and inside the socket as well.

Available in various sizes starting from 25 mm to 150 mm diameter in various categories, thick and thin technology to ensure uniform thickness across the length of the pipe and the square threads for extra strength, are some of the unique features of VPL Column Pipes.

#### FEATURES

- Column pipes offer many advantages like light in weight, high tensile load capacity, leak proof joints and long life making them very economical.
- Special compound - Manufactured from especially designed uPVC compound to make it sufficiently strong against loads and pressure that it may encounter during installation and use.
- Square threads - Unique square thread design makes the joints fairly strong with sufficient safety factor to take care of load of entire assembly along with weight of the pump. These specially designed threads also make them suitable for easy joining and re-joining several times.
- Sealing ring - Specially designed D type and flat rubber sealing rings provided on the threads make the joints watertight and help absorb pump vibrations

Dimensions of Column Pipes for Submersible Pumps.



## PVC PIPE

DIMENSIONS OF COLUMN PIPES									
SIZE	TYPE	OD OF TYPE		END OF WALL THICKNESS		BARREL THICKNESS		PIPE LENGTH IN (MM)	THICK PORTION OF BOTH SIDE IN (MM)
		MIN.	MAX.	MIN.	MAX.	MIN.	MAX.		
1" DN : 25mm	Belling	32.6	33.3	3.3	4.2	1.4	2.3	3050±10	150
	Eco	32.6	33.3	3.3	4.2	1.6	2.5	2998±3	150
	Light	32.6	33.3	3.6	4.5	2.4	3.3	2998±3	150
	Med.	32.6	33.3	4.2	5.1	2.9	3.8	2998±3	200
	Std.	32.6	33.3	5.5	6.4	3.8	4.7	2998±3	200
1.25" DN:32mm	Belling	41.6	42.3	4.1	5	1.8	2.9	3050±10	150
	Eco	41.6	42.3	4.1	5	1.8	2.9	2998±3	150
	Light	41.6	42.3	4.5	5.45	2.4	3.2	2998±3	150
	Med.	41.6	42.3	4.8	5.7	2.8	3.9	2998±3	200
	Std.	41.6	42.3	5.7	6.6	3.8	4.9	2998±3	200
	Heavy	41.6	42.3	7.1	8	5	5.9	2998±3	250
1.5" DN:40mm	Eco	47.6	48.3	4.3	5.2	2.5	3.4	2998±3	150
	Light	47.6	48.3	4.5	5.35	2.7	3.6	2998±3	150
	Med.	47.6	48.3	5.2	6	3.3	4.4	2998±3	200
	Std.	47.6	48.3	6	6.9	4	4.9	2998±3	200
	Heavy	47.6	48.3	8.4	9.2	5.2	6.1	2998±3	250
	Sup.Havey	47.6	48.3	9.2	10	6	6.9	2998±3	250
2" DN :50mm	Eco	59.5	60.3	4.1	5	2	2.9	2998±3	200
	Med.	59.5	60.3	5.1	6	2.5	3.4	2998±3	200
	Std.	59.5	60.3	6.2	7	3.9	4.8	2998±3	200
	Heavy	59.5	60.3	7.7	8.5	5.7	6.6	2998±3	250
	Sup.Havey	59.5	60.3	9	10.4	6.5	7.7	2998±3	250
2.5" DN:65mm	Med.	74.5	75.3	5.3	6.2	2.6	3.4	2998±3	200
	Std.	74.5	75.3	6.5	7.35	3.9	4	2998±3	200
	Heavy	74.5	75.3	8.8	9.7	6.4	7.8	2998±3	250
	Sup.Havey	74.5	75.3	10.8	11.2	7.7	9	2998±3	250
3" DN:80mm	Med.	87.5	88.3	5.7	6.6	3	4	2998±3	200
	Std.	87.5	88.3	7.2	8.1	4.9	5.2	2998±3	200
	Heavy	87.5	88.3	9.7	10.2	7.2	8.5	2998±3	250
	Sup.Havey	87.5	88.3	12.4	14.5	9.7	11.2	2998±3	250
4" DN :100mm	Med.	112.5	113.3	6.5	7	3.6	4.8	2998±3	200
	Std.	112.5	113.3	8.2	9.5	5.6	7	2998±3	200
	Heavy	112.5	113.3	12.2	14	9	10.5	2998±3	250
	Sup.Havey	112.5	113.3	15.8	17.5	12.7	14.5	2998±3	250
5" DN 125mm	Std.	139.5	140.3	12.9	14.5	8.7	9	2998±3	250
	Heavy	139.5	140.3	16.3	18	13	14.5	2998±3	250
	Sup.Havey	139.5	140.3	19.6	21.5	16	18.5	2998±3	250
6" DN 150mm	Heavy	164.5	165.4	17.5	18.5	13.9	14.5	2998±3	250
	Sup.Havey	164.5	165.43.3	20.5	22.8	18	20.1	2998±3	250

### uPVC PIPES FOR USE IN UNDERGROUND DRAINAGE & SEWERAGE SYSTEM CONFORMING TO **IS 15328**

VPL offers economical, high performance drainage systems to meet the demanding needs of today's drain and sewer market. Like all our other products, they are cost effective, strong and resistant to impact and are easy to install. There is a range of drainage accessories designed to meet the needs of the most stringent building regulations. Their overall-flexibility ensures that VPL can supply all domestic and commercial requirements for foul water and surface water drainage, up to and including the main sewers.

Solid wall pipe and fittings, predominately used for private drainage but suitable for public and private sewers. Also available with rubber joint leak proof systems.

These pipes are self socketed at one end & plain at other end. Sockets are made on automatic socketing machine with accuracy. Socket has groove inside to retain rubber ring. The rubber ring joint ensures trouble free water tight joint with allowance to expansion / contraction.

#### FEATURES

- Specially designed for underground non-pressure applications
- Easy to install
- Hygienic and leak proof
- Smooth inner bore for better flow rate of water
- Lower installation & maintenance cost as compared to conventional pipes
- Excellent stiffness and impact resistance
- Easy of jointing when using uPVC joints & fittings

#### APPLICATIONS

- Specially Recommended for Underground Drainage
- Sewerage Systems.
- Industrial/Chemical Effluent Conveyance.
- Lining of Existing Sewerage lines.
- Storm Water Drainage.
- Acid and slurries transportation.



## PVC PIPE

DIMENSIONS OF PIPES (IS: 15328)							
Nominal Outside (MM)	Mean Outside Diameter of		Outside Diameter of Pipe at Any		Wall Thickness		
	Min.	Max.	Min.	Max.	SN-2 (SDR51)	SN-4 (SDR41)	SN-8 (SDR34)
63	63.0	63.3	62.2	63.8	-	-	2.7 + 0.4
75	75.0	75.3	74.1	75.9	-	-	2.8 + 0.5
90	90.0	90.3	88.9	91.2	-	-	2.9 + 0.5
110	110.0	110.4	108.6	111.4	-	-	3.2 + 0.5
125	125.0	125.4	123.5	126.5	-	3.2 + 0.5	3.7 + 0.7
160	160.0	160.5	158.0	162.0	3.2 + 0.5	4.0 + 0.6	4.7 + 0.7
200	200.0	200.6	197.6	202.4	3.9 + 0.6	4.9 + 0.7	5.9 + 0.8
250	250.0	250.8	247.0	253.0	4.9 + 0.7	6.2 + 0.8	7.3 + 1.0
315	315.0	316.0	311.2	318.8	6.2 + 0.8	7.7 + 1.0	9.2 + 1.2
400	400.0	401.2	395.2	404.8	7.9 + 1.0	9.8 + 1.2	11.7 + 1.4



# UPVC PIPES FOR SOIL AND WASTE DISCHARGE SYSTEM INSIDE BUILDINGS INCLUDING VENTILATION AND RAINWATER SYSTEM CONFORMING TO **IS 13592**

uPVC SWR Drainage System is an easy & economical product for drainage of soil waste & rain water application in residential, commercial & industrial buildings with many advantages over the conventional piping systems.

SWR systems include solvent-weld and push-fit options for both soil, waste and rain water drainage: a comprehensive range of products and accessories. Industry leading and world class range of solvent and push-fit soil and waste solutions offer unrivalled installation options, high quality finish, superior technology and are suitable for all types of commercial and domestic installations.

### FEATURES

- High quality and wide range - The system consists of pipes and a wide range of fittings with various traps, which makes the system complete in all respect and hence customer need not to depend on conventional systems.
- Strong and long lasting - This system is highly resilient, tough and durable with high tensile strength and high impact strength. Moreover it is free from problems caused by scale formation, rusting, weathering and chemical action and hence it lasts for lifetime.
- Excellent chemical and corrosion resistance - Being non-metallic, this system is completely free from corrosion and offers very good resistance to wide range of chemicals.
- UV resistance - It eliminates the adverse effect of sunlight and weather and can safely used for outdoor installations.
- Quick and convenient installation - Being extremely light in weight and provided with special rubber jointing technique, installation of this system becomes very easy.
- Quick and efficient removal of waste without leakage - Mirror smooth and restriction free inner surface of pipes and fittings ensures superior flow characteristics making the system is free from problems of clogging and drain choke-up. System is completely leak-proof and designed to maintain high standards of hygiene.
- Adequate and easy access for cleaning and clearing obstructions.
- Least maintenance - Once installed VPL S.W.R. drainage system needs minimal maintenance.
- Cost effective - VPL S.W.R. drainage system is more cost effective than any conventional drainage system.

DIMENSIONS					
Nominal Outside Diameter  (MM)	Tolerance Outside on Outside Diameter  (MM)	Wall Thickness (MM)			
		TYPE - A		TYPE - B	
		Min.	Max.	Min.	Max.
50	+0.3	1.8	2.2	3.2	3.8
63	+0.3	1.8	2.2	3.2	3.8
75	+0.3	1.8	2.2	3.2	3.8
90	+0.4	1.9	2.3	3.2	3.8
110	+0.4	2.2	2.7	3.2	3.8
160	+0.5	3.2	3.8	4.0	4.6





RIGID PVC CONDUIT FOR ELECTRICAL INSTALLATIONS  
CONFORMING TO **IS 9537 (Part-3)**

An electrical conduit is a tubing system used for protection and routing of electrical wiring. PVC conduit is the lightest in weight compared to other conduit materials, and usually lower in cost than other forms of conduit such as Steel and G. I. Conduits.

FEATURES

- Non conductor of electricity.
- High mechanical strength in concealed and open conditions.
- Smooth finished inner surface ensures friction free & easy wiring.
- Corrosion free and resistant to bacterial, termite and fungal growth.
- Moisture-resistant and flame retardant.
- Due to light weight easy to handle, install & transport.
- Economical, durable & maintenance free.
- Easy to replace.
- No deformation or bending.
- No cracking.
- Non toxic.

S.No.	Nominal Size (MM)	Maximum O.D. (MM)	Minimum O.D. (MM)	Minimum Internal Diameter		
				Light Mechanical Strength (MM)	Medium Mechanical Strength (MM)	Heavy Mechanical Strength (MM)
1	20	20	19.70	17.40	16.90	15.80
2	25	25	24.60	22.10	21.40	20.60
3	32	32	31.60	28.60	27.80	26.60
4	40	40	39.60	35.80	35.40	34.40
5	50	50	49.50	45.10	44.30	43.20
6	63	63	62.10	57.00	-	-



### cPVC PIPES FOR POTABLE HOT AND COLD WATER DISTRIBUTION CONFORMING TO **IS 15778**

cPVC sets a tough new standard for performance in hot and cold water plumbing systems. With an advanced, new chemical formula, CPVC solves many of the problems of both copper and conventional CPVC, while delivering exceptional value.

#### FEATURES

CPVC is resistant to low-pH water, coastal salt air or corrosive soil. It also offers several other outstanding benefits:

- Economical than traditional pipe material.
- Full, unrestricted water flow.
- Extremely cost-effective pricing.
- Cement fusing.
- Excellent heat retention.
- Very quiet operation.

#### Dimensional details & pressure ratings of SDR-13.5 (Class-2) CPVC Pipes as per IS-15778 & ASTM D-2846

Nominal Size		Mean Outside Dia. (MM)		Wall Thickness (MM)		Pressure at 27°C		Pressure at 82°C	
IN	(MM)	Average	Tolerance	(MM)	Tolerance	(kg/cm)	MPA	(kg/cm)	MPA
1/2	15	15.9	± 0.1	1.65	± 0.25	21.8	2.18	5.5	0.55
3/4	20	22.2	± 0.1	1.95	± 0.25	21.8	2.18	5.5	0.55
1	25	28.6	± 0.1	2.36	± 0.25	21.8	2.18	5.5	0.55
1 (1/4)	32	34.9	± 0.1	2.85	± 0.25	21.8	2.18	5.5	0.55
1 (1/2)	40	41.3	± 0.1	3.85	± 0.25	21.8	2.18	5.5	0.55
2	50	54.3	± 0.1	4.25	± 0.25	21.8	2.18	5.5	0.55

#### Dimensional details & pressure ratings of SDR-11 (Class-1) CPVC Pipes as per IS-15778 & ASTM D-2846

Nominal Size		Mean Outside Dia. (MM)		Wall Thickness (MM)		Pressure at 27°C		Pressure at 82°C	
IN	(MM)	Average	Tolerance	(MM)	Tolerance	(kg/cm)	MPA	(kg/cm)	MPA
1/2	15	15.9	± 0.1	1.95	± 0.25	27.6	2.76	6.8	0.68
3/4	20	22.2	± 0.1	2.25	± 0.25	27.6	2.76	6.8	0.68
1	25	28.6	± 0.1	2.85	± 0.25	27.6	2.76	6.8	0.68
1 (1/4)	32	34.9	± 0.1	3.45	± 0.25	27.6	2.76	6.8	0.68
1 (1/2)	40	41.3	± 0.1	4.05	± 0.25	27.6	2.76	6.8	0.68
2	50	54.3	± 0.1	5.20	± 0.25	27.6	2.76	6.8	0.68



# **STEEL PIPES & TUBES**

---



## STEEL PIPES & TUBE

ERW pipes & tubes are made from HR coils manufactured by reputed steel producer. After being longitudinally slitted & edge preparation, the strip is progressively formed into a circular, rectangular, square shape by passing it through a series of forming rolls.

Continuous welding is carried out by a high frequency induction welding machine, and the seam is formed by fusing the edges without any filler metal. The welded pie, after cooling is cut in appropriate length after attaining its specified inside and outside diameter.

The pipes & tubes are conveyed to the finishing bay for finishing, testing & inspection. Hydro testing of pipes is undertaken to detect leaks and fissures prior to galvanizing and threading. The pipes are subsequently galvanized / black varnished / threaded / painted / powder coated as per specification / client requirement.

ERW pipes & tubes are extensively used in agriculture, industry, construction activities like scaffolding and casing in bore wells. Rectangular and square hollow sections are used for structural purpose considering the challenging and varied applications the pipes are produced to meet national and international specification.

### WATER PIPE LINES

Water Mains, Plumbing, Sewerage Systems  
Industrial Water Line, Plant Piping  
IS:1239, IS:3589, ASTM A 53, JIS G 3444  
EN 10255, EN 10217-1, AS:1074  
ASNZ:1163

### FIRE FIGHTING SYSTEM

ASTM A 53, ASTM A 795  
IS:3589, IS:1239

### POWER PROJECTS

Ash Handling System, LP Piping,  
IS:3589, IS:1239

### CONSTRUCTION INDUSTRIES

Scaffolding & Structural Purposes.  
IS:1161, IS:4923, EN 39  
EN 10219 - Part 1 & 2, AS NZ:1163  
ASTM A 500  
Electrical Poles & Telecom Tower (IS:1161)

### AGRICULTURE & IRRIGATION

Deep Tubewells & casing pipes IS:4270

### OTHER PURPOSES

Supply of Exhaust Piping, cold storage industry  
LPG Cylinder supporting rings (IS:1239)  
Steel Tubes for Idlers & belt conveyors (IS:9295)  
Electrical Poles & telecom Tower (IS:1161)  
HVAC (Heating Ventilation Air-Conditioning)



## STEEL PIPES & TUBE

### STEEL TUBES FOR USE IN WATER, GAS & AIR LINES CONFORMING TO IS 1239

N.B. & SERIES		OUTSIDE DIAMETER		WALL THICKNESS		NOMINAL WEIGHT BLACK TUBES				NOMINAL WEIGHT GALVANIZED TUBES				SOCKETS	
						PLAIN END		SCREWED & SOCKETED		PLAIN END		SCREWED & SOCKETED		Min. O.D.	MIN. LENGTH
(MM)		Min. (MM)	Max. (MM)	Min.	SWG	KG/M	M/ TONE	KG/M	M/ TONE	KG/M	M/ TONE	KG/M	M/ TONE	(MM)	(MM)
15	L	21.0	21.4	2.00	14	0.947	1056	0.956	1043	0.990	1010	1.002	998	27.0	37.0
	M	21.0	21.8	2.60	12	1.21	830	1.22	822	1.25	801	1.260	794		
	H	21.0	21.8	3.20	10	1.44	696	1.45	691	1.48	677	1.489	671		
20	L	26.4	26.9	2.30	13	1.38	726	1.39	718	1.43	698	1.448	690	32.5	39.0
	M	26.5	27.3	2.60	12	1.56	642	1.57	636	1.61	620	1.628	614		
	H	26.5	27.3	3.20	10	1.87	535	1.88	530	1.92	520	1.939	516		
25	L	33.2	33.8	2.60	12	1.98	505	2.00	489	2.05	488	2.077	482	39.5	46.0
	M	33.3	34.2	3.20	10	2.41	415	2.43	411	2.48	404	2.501	400		
	H	33.3	34.2	4.00	8	2.93	341	2.95	338	3.00	334	3.022	331		
32	L	41.9	42.5	2.60	12	2.54	394	2.57	388	2.63	380	2.669	375	49.0	51.0
	M	42.0	42.9	3.20	10	3.10	323	3.13	319	3.19	314	3.227	310		
	H	42.0	42.9	4.00	8	3.79	264	3.82	261	3.88	258	3.920	255		
40	L	47.8	48.4	2.90	11	3.23	309	3.27	305	3.33	300	3.383	296	56.0	51.0
	M	47.9	48.8	3.20	10	3.56	281	3.60	277	3.66	273	3.709	270		
	H	47.9	48.8	4.00	8	4.37	229	4.41	226	4.47	224	4.518	221		
50	L	59.6	60.2	2.90	11	4.08	245	4.15	241	4.21	238	4.277	234	68.0	60.0
	M	59.7	60.8	3.60	9	5.03	199	5.10	196	5.16	197	5.234	191		
	H	59.7	60.8	4.50	7	6.19	161	6.26	160	6.32	158	6.390	156		
65	L	75.2	76.0	3.20	10	5.71	175	5.83	172	5.88	170	5.992	167	84.0	69.0
	M	75.3	76.6	3.60	9	6.42	156	6.54	153	6.59	152	6.702	149		
	H	75.3	76.6	4.50	7	7.93	126	8.05	124	8.09	124	8.206	122		
80	L	87.9	88.7	3.20	10	6.72	149	6.89	145	6.91	145	7.081	141	98.0	75.0
	M	88.0	89.5	4.00	8	8.36	120	8.53	117	8.55	117	8.725	115		
	H	88.0	89.5	4.80	6	9.9	101	10.10	99	10.13	99	10.300	97		
100	L	113.0	113.9	3.60	9	9.75	103	10.00	100	10.00	100	10.248	98	124.0	87.0
	M	113.1	115.0	4.50	7	12.2	82	12.50	80	12.40	81	12.657	79		
	H	113.1	115.0	5.40	5	14.5	69	14.80	68	14.71	68	14.966	67		
125	M	138.5	140.8	4.80	6	15.90	63	16.40	61	16.27	61	16.654	60	151.0	96.0
	H	138.5	140.8	5.40	5	17.9	56	18.40	55	18.18	55	18.568	54		
150	M	163.9	166.5	4.80	6	18.90	53	19.55	51	19.35	52	19.841	50	178.0	96.0
	H	163.9	166.5	5.40	5	21.3	47	21.90	46	21.64	46	22.133	45		

#### TOLERANCES

##### (A) THICKNESS

Light Tubes + Not Limited  
- 8%

Medium & Heavy Tubes + Not Limited  
- 10%

##### (B) WEIGHT

Single Tube ± 10%  
(Light Series)

Single Tubes (Medium & Heavy Series ) + Not Limited  
- 10 %

For Quantities Per Load of 10 Tonnes Minimum (Light Series) + 7.5%  
- 5%

For quantities per load of 10 Tonnes ± 7.5%  
Minimum Medium & Heavy Series

##### (C) LENGTH

Unless Otherwise Specified 4 to 7 Meters

## STEEL PIPES & TUBE

### STEEL TUBES FOR WATER & SEWAGE PURPOSE

CONFORMING TO **IS 3589**

N.B. Size (MM)	Outside Diameter (MM)	Wall Thickness (MM)	Weight KG/M (MM)	Weight M / TONNE
150	168.3	2.6	10.6	94
		3.2	13.0	77
		4.0	16.2	62
		4.5	18.2	55
200	219.1	2.6	13.9	72
		3.6	19.1	52
		4.5	23.8	42
		6.3	33.1	30
250	273	3.6	23.9	42
		4.0	26.5	38
		5.0	33	30
		6.3	41.4	24

N.B. Size (MM)	Outside Diameter (MM)	Wall Thickness (MM)	Weight KG/M (MM)	Weight M / TONNE
300	323.9	4.0	31.6	31
		4.5	35.4	28
		5.6	44	23
		7.1	55.5	18
350	355.6	4.0	34.8	29
		5.0	43.2	23
		5.6	48.3	21
		8.0	68.6	15
400	406.4	4.0	39.7	25
		5.0	49.5	20
		6.3	62.2	16
		8.8	86.3	12

#### A - PHYSICAL PROPERTIES

Grade	Y.S. MPa Min	T.S. MPa Min	% Age Elongation Min
FE 330	195	330	20
FE 410	235	410	18
FE 450	275	450	15

#### B - TOLERANCES

1. Outside Diameter of Pipe  $\pm 0.75\%$
2. Thickness Upto 406.4mm OD  $\pm 10\%$
3. Unless otherwise specified, length are in single random lengths from 4to7 meters and double random length From 7 to 14 Meters





## STEEL PIPES & TUBE

### STEEL TUBES FOR WATER WELLS (CASING PIPES) CONFORMING TO **IS 4270**

N.B. Size (MM)	Outside Diameter (MM)	Wall Thickness (MM)	Weight (Plain END) (MM)
100	114.3	5.0	13.48
125	141.3	5.0	16.80
150	168.3	5.0	20.13
175	193.7	5.4	25.10
200	219.1	5.4	28.46
225	244.5	6.0	35.29
250	273.1	7.1	46.57
300	323.9	7.1	55.47
350	355.6	8.0	68.57
350	355.6	10.0	85.22
350	355.6	12.0	101.67
400	406.4	8.0	78.60
400	406.4	10.0	97.75
400	406.4	12.0	116.71

#### A - PHYSICAL PROPERTIES

Grade	Y.S. MPa Min	T.S. MPa Min	% Age Elongation Min
FE 410	235	410	15
FE 450	275	450	13

#### B - TOLERANCES

1. Outside Diameter of Pipe  $\pm 1.0\%$
2. Thickness Upto 406.4mm OD  $+ 15\% \text{ \& } - 12.5\%$
3. Weight Single Tube  $+ 10\% \text{ \& } - 8\%$
4. Length Unless Otherwise Specified 4 to 7 Mtrs.



## STEEL PIPES & TUBE

### STEEL TUBES FOR IDLERS BELT CONVEYORS CONFORMING TO IS 9295

Outside Diameter (MM)	Wall Thickness (MM)	Mass Kg/Mtr.	Mtrs. / TONNE	Outside Diameter (MM)	Wall Thickness (MM)	Mass Kg/Mtr.	Mtrs. / TONNE
63.50	3.65	5.39	186	139.70	4.50	15.00	67
	4.05	5.87	170		4.85	16.13	62
	4.50	6.55	153		5.40	17.90	56
	4.85	7.01	143		6.30	20.73	48
76.10	3.65	6.52	153	152.40	4.50	16.40	61
	4.05	7.20	139		4.85	17.65	57
	4.50	7.95	126		5.40	19.50	51
	4.85	8.52	117		6.30	22.70	44
88.9	4.05	8.47	118	165.10	4.50	17.80	56
	4.50	9.36	107		4.85	19.17	52
	4.85	10.05	99		5.40	21.27	47
	5.40	11.12	90		6.30	24.68	41
101.60	4.05	9.74	103	168.30	4.50	18.20	55
	4.50	10.78	93		4.85	19.55	51
	4.85	11.57	86		5.40	21.69	46
	5.40	12.81	78		6.30	25.17	40
114.30	4.50	12.19	82	219.10	5.40	28.50	35
	4.85	13.09	76		6.30	33.06	30
	5.40	14.50	69		7.10	37.12	27
	6.30	16.78	60				

#### A - PHYSICAL PROPERTIES

Grade	Y.S. MPa Min	T.S. MPa Min	% Age Elongation Min
ERW 210	210	330	20
ERW 240	240	410	18
ERW 310	310	450	15

#### B - TOLERANCES

- Outside Diameter  $\pm 0.8\%$
- Ovality Below 168.3mm OD 0.5mm
- Ovality Including 168.3mm and Above 1.0mm
- Weight Kg/Mtr. : Single Tube  $+ 10\%$
- For Truck Load of Ten Tonnes  $\pm 7.5\%$
- Thickness  $\pm 10\%$

## STEEL PIPES & TUBE

### THIN WALLED FLEXIBLE QUICK COUPLING PIPES CONFORMING TO IS 11722

These pipes are versatile, economical and reliable piping system available. It is easier, faster and safer to install than normal welding, threading or flanging pipes resulting in lower installation and labor costs. These pipes are intended for water supply where transportation and quick assembly of pipes are the main requisite.

#### APPLICATIONS

- Irrigation including sprinkler irrigation
- Construction site water supply in civil engineering and construction projects, compressed air pipelines and networks at construction sites.
- Temporary on emergency water service
- Suction lines (Tube wells)
- De-watering in flood relief operations
- Dust suppression through sprinkling in mining, ore handling, etc.
- Wellpoint de-watering networks
- Aeration in fish farming
- Fire preventing and fighting (Coal, yard/pits, timber yard/raw material stock yards for paper mills)

Outside Diameter	Wall Thickness Type A*	Wall Thickness Type B#	Wall Thickness Type C#
25.4	-	1.40	2.00
31.8	-	1.40	2.00
38.1	-	1.40	2.00
50.8	1.00	1.60	2.50
63.5	-	1.60	2.50
76.2	1.00	1.60	2.50
101.6	1.00	1.60	3.00
127.0	1.25	1.60	3.00
152.4	1.40	1.60	3.40
203.2	-	2.00	4.00
254.0	-	2.60	4.50
304.8	-	3.10	5.00

\*Pressure activated couplers.

#mechanically clamped couplers.



# STEEL TUBES FOR STRUCTURAL PURPOSES

## STEEL TUBES

CONFORMING TO **IS 1161**

NB MM (1)	OD MM (2)	Thk MM (3)	Mass kg/m (4)	Area of Cress - Section cm <sup>2</sup> (5)	Internal Volume cm <sup>3</sup> /m (6)	Surface		Moment of Inertia cm <sup>4</sup> /m (9)	Modulus of Section cm <sup>3</sup> (10)	Radius of Gyration cm (11)	Square of Radius of Gyration cm <sup>2</sup> (12)
						External cm <sup>3</sup> /m (7)	Internal cm <sup>3</sup> /m (8)				
15	21.3	2	0.952	1.21	235	669	543	0.57	0.54	0.69	0.47
	21.3	2.6	1.20	1.53	204	669	506	0.68	0.64	0.67	0.45
	21.3	3.2	1.43	1.82	174	669	468	0.77	0.72	0.65	0.42
20	26.9	2.3	1.40	1.78	391	845	701	1.36	1.01	0.87	0.76
	26.9	2.6	1.56	1.98	370	845	682	1.48	1.10	0.86	0.75
	26.9	3.2	1.87	2.38	330	845	644	1.70	1.27	0.85	0.71
25	33.7	2.6	1.99	2.54	638	1059	895	3.09	1.84	1.10	1.22
	33.7	3.2	2.41	3.07	585	1059	858	3.60	2.14	1.08	1.18
	33.7	4	2.93	3.73	519	1059	807	4.19	2.49	1.06	1.12
32	42.4	2.6	2.55	3.25	1087	1332	1169	6.46	3.05	1.41	1.99
	42.4	3.2	3.09	3.94	1018	1332	1131	7.62	3.59	1.39	1.93
	42.4	4	3.79	4.83	929	1332	1081	8.99	4.24	1.36	1.86
40	48.3	2.9	3.25	4.14	1419	1517	1335	10.70	4.43	1.61	2.59
	48.3	3.2	3.56	4.53	1379	1517	1316	11.59	4.80	1.60	2.56
	48.3	4	4.37	5.57	1276	1517	1266	13.77	5.70	1.57	2.47
50	60.3	2.9	4.11	5.23	2333	1894	1712	21.59	7.16	2.03	4.13
	60.3	3.6	5.03	6.41	2215	1894	1668	25.87	8.58	2.01	4.03
	60.3	4.5	6.19	7.89	2067	1894	1612	30.90	10.25	1.98	3.92
65	76.1	2.9	5.24	6.67	3882	2391	2209	44.74	11.76	2.59	6.71
	76.1	3.6	6.44	8.20	3728	2391	2165	54.01	14.19	2.57	6.59
	76.1	4.5	7.95	10.12	3536	2391	2108	65.12	17.11	2.54	6.43
80	88.9	3.2	6.76	8.62	5346	2793	2592	79.21	17.82	3.03	9.19
	88.9	4	8.38	10.67	5140	2793	2542	96.34	21.67	3.00	9.03
	88.9	4.8	9.96	12.68	4939	2793	2491	112.49	25.31	2.98	8.87
90	101.6	3.6	8.70	11.08	6999	3192	2966	133.24	26.23	3.47	12.02
	101.6	4	9.63	12.26	6881	3192	2941	146.28	28.80	3.45	11.93
	101.6	4.8	11.46	14.60	6648	3192	2890	171.39	33.74	3.43	11.74
100	114.3	3.6	9.83	12.52	9009	3591	3365	191.98	33.59	3.92	15.33
	114.3	4.5	12.19	15.52	8709	3591	3308	234.32	41.00	3.89	15.10
	114.3	5.4	14.50	18.47	8413	3591	3252	274.54	48.04	3.85	14.86
110	127	4.5	13.59	17.32	10936	3990	3707	325.29	51.23	4.33	18.78
	127	4.8	14.47	18.43	10825	3990	3688	344.50	54.25	4.32	18.69
	127	5.4	16.16	20.63	10605	3990	3651	382.04	60.16	4.30	18.52
125	139.7	4.5	15.00	19.11	13417	4389	4106	437.20	62.59	4.78	22.87
	139.7	4.8	15.97	20.34	13295	4389	4087	463.33	66.33	4.77	22.78
	139.7	5.4	17.89	22.78	13050	4389	4050	514.50	73.66	4.75	22.58
135	152.4	4.5	16.41	20.91	16151	4788	4505	572.24	75.10	5.23	27.37
	152.4	4.8	17.47	22.26	16016	4788	4486	606.76	79.63	5.22	27.26
	152.4	5.4	19.58	24.94	15748	4788	4448	674.51	88.52	5.20	27.05
150	165.1	4.5	17.82	22.70	19138	5187	4904	732.57	88.74	5.68	32.27
	165.1	4.8	18.98	24.17	18991	5187	4885	777.13	94.14	5.67	32.15
	165.1	5.4	21.27	27.09	18699	5187	4847	864.70	104.75	5.65	31.92
	165.1	5.9	23.20	29.50	18465	5189	4818	970.00	113.40	5.63	31.72
	165.1	6.3	24.67	31.43	18265	5187	4791	992.28	120.20	5.62	31.57
	165.1	8	30.99	39.48	17460	5187	4684	1221.25	147.94	5.56	30.93
150	168.3	4.5	18.18	23.16	19931	5287	5005	777.32	92.36	5.79	33.56
	168.3	4.8	19.35	24.66	19781	5287	4986	824.57	97.99	5.78	33.44
	168.3	5.4	21.69	27.64	19483	5287	4948	917.69	109.05	5.76	33.21
	168.3	6.3	25.17	32.06	19040	5287	4891	1053.42	125.18	5.73	32.85
	168.3	8	31.63	40.29	18218	5287	4785	1297.27	154.16	5.67	32.20
	168.3	10	39.04	49.73	17273	5287	4659	1563.98	185.86	5.61	31.45



## STEEL TUBES FOR STRUCTURAL PURPOSES

NB MM (1)	OD MM (2)	Thk MM (3)	Mass kg/m (4)	Area of Cress - Section cm <sup>2</sup> (5)	Internal Volume cm <sup>3</sup> /m (6)	Surface		Moment of Inertia cm <sup>4</sup> /m (9)	Modulus of Section cm <sup>3</sup> (10)	Radius of Gyration cm (11)	Square of Radius of Gyration cm <sup>2</sup> (12)
						External cm <sup>3</sup> /m (7)	Internal cm <sup>3</sup> /m (8)				
175	193.7	4.8	22.36	28.49	26619	6085	5784	1271.39	131.27	6.68	44.63
	193.7	5.4	25.08	31.94	26273	6085	5746	1416.97	146.31	6.66	44.36
	193.7	5.9	27.33	34.81	25987	6085	5715	1536.13	158.61	6.64	44.31
	193.7	6.3	29.12	37.09	25759	6085	5689	1630.05	168.31	6.63	43.95
	193.7	8	36.64	46.67	24801	6085	5583	2015.54	208.11	6.57	43.19
	193.7	10	45.30	57.71	23697	6085	5457	2441.59	252.10	6.50	42.31
	193.7	12	53.77	68.50	22618	6085	5331	2839.20	293.15	6.44	41.45
200	219.1	4.8	25.37	32.32	34471	6883	6582	1856.03	169.42	7.58	57.43
	219.1	5.6	29.49	37.56	33947	6883	6531	2141.61	195.49	7.55	57.02
	219.1	5.9	31.02	39.52	33751	6883	6513	2247.01	205.11	7.54	56.86
	219.1	6.3	33.06	42.12	33491	6883	6487	2386.14	217.81	7.53	56.65
	219.1	8	41.65	53.06	32397	6883	6381	2959.63	270.16	7.47	55.78
	219.1	10	51.57	65.69	31134	6883	6255	3598.44	328.47	7.40	54.78
	219.1	12	61.29	78.07	29895	6883	6129	4199.88	383.38	7.33	53.79
225	244.5	5.9	34.72	44.23	42529	7681	7310	3149.12	257.60	8.44	71.21
	244.5	6.3	37.01	47.14	42237	7681	7285	3346.03	273.70	8.42	70.97
	244.5	8	46.66	59.44	41007	7681	7179	4160.45	340.32	8.37	70.00
	244.5	10	57.83	73.67	39584	7681	7053	5073.15	414.98	8.30	68.86
250	273	5.9	38.86	49.51	53584	8577	8206	4417.18	323.60	9.45	89.22
	273	6.3	41.44	52.79	53256	8577	8181	4695.82	344.02	9.43	88.96
	273	8	52.28	66.60	51875	8577	8074	5851.71	428.70	9.37	87.86
	273	10	64.86	82.62	50273	8577	7948	7154.09	524.11	9.31	86.59
	273	12	77.24	98.39	48695	8577	7823	8396.14	615.10	9.24	85.33
300	323.9	6.3	49.34	62.86	76111	10176	9780	7928.90	489.59	11.23	126.14
	323.9	8	62.32	79.39	74458	10176	9673	9910.08	611.92	11.17	124.82
	323.9	10	77.41	98.61	72536	10176	9547	12158.34	750.75	11.10	123.29
	323.9	12	92.30	117.58	70639	10176	9422	14319.56	884.20	11.04	121.78
350	355.6	8	68.58	87.36	90759	11172	10669	13201.37	742.48	12.29	151.11
	355.6	10	85.23	108.57	88457	11172	10543	16223.50	912.46	12.22	149.42
	355.6	12	101.68	129.53	86361	11172	10418	19139.47	1076.46	12.16	147.76

### TOLERANCES

#### (A) Outside diameter:

- 1) Up to and including 48.3 mm : + 0.4 mm  
- 0.8 mm
- 2) Over 48.3 mm : ± 1.0 percent

#### (B) Thickness (for all size) :

- 1) Welded tubes : ± 10 percent
- 2) Seamless tubes : + Not limited  
- 12.5 percent

#### (C) Weight :

- 1) Single tube : ± 10 percent
- 2) 10 tonne lots : ± 7.5 percent

## STEEL TUBES FOR STRUCTURAL PURPOSES

### STEEL HOLLOW SECTION (SHS & RHS)

#### CONFORMING TO **IS 4923**

Closed Structural (RHS / SHS) manufactured our company has several techno economic advantages over Conventional Structural.

- The raw material used to make these structural comes from reputed steel producer.
- The remarkable strength around their axis which leads to decisive advantages with regards to application technology.
- Closed Structural's behave move efficiently than Conventional Structural's due to their high torsional rigidity as well compressive strength.
- Their higher strength to weight ratio results in upto 30 to 40% saving in steel.
- The smooth, uniform profile of these sections minimize corrosion and facilitate easy, at-site fabrication.
- They also enhance the aesthetic appeal of structures.

#### APPLICATION

- Agricultural Implement Frames
- Amusement Park and Playground Equipments
- Automobile Chassis
- Bridges
- Bus Stands
- Conveyor Gantries, Trestles Cranes
- Drilling Rags
- Exhibition Stalls
- Furniture, Partition Frames
- Flood Light Masts
- Guard Rails, Staircases
- Industrial Lifting Equipment
- Industrial Sheds
- Large Span Portal Frames Material Storage
- Racks
- Mine Roof Support System (cogs, props)
- Pallets
- Pedestrian Walkovers (Footbridge)
- Sign Supporting Structure
- Space Frames
- Sports Galleries
- Transmission Line Towers
- Trolleys
- Truck and Bus Body Members
- Trusses, Columns and Purlings
- And lots of other applications....



## STEEL TUBES FOR STRUCTURAL PURPOSES

### SQUARE HOLLOW SECTION (SHS)

CONFORMING TO **IS 4923**

SHS DxD	DEPTH D	WIDTH D	THICKNESS	WEIGHT	AREA OF SECTION	MOMENT OF INERTIA	RADIUS OF GYRATION	ELASTIC OF MODULUS	PLASTIC MODULUS
(MM)	(MM)	(MM)	(MM)	KG/M	Cm2	Cm4	Cm	Cm3	Cm3
1	2	3	4	5	6	7	8	9	10
20.0 X 20.0	20.0	20.0	2.0	1.15	1.33	0.58	0.68	0.61	0.61
	20.0	20.0	2.6	1.46	2.17	0.63	0.66	0.66	0.66
25.0 X 25.0	25.0	25.0	2.6	1.69	2.16	1.72	0.89	1.38	1.76
	25.0	25.0	3.2	1.98	2.53	1.89	0.86	1.51	1.98
32.0 X 32.0	32.0	32.0	2.6	2.26	2.88	4.02	1.18	2.51	3.11
	32.0	32.0	3.2	2.69	3.42	4.54	1.15	2.84	3.59
	32.0	32.0	4.0	3.19	4.07	5.02	1.11	3.14	4.11
40.0 X 40.0	40.0	40.0	2.6	2.92	3.72	8.45	1.51	4.22	5.12
	40.0	40.0	3.2	3.49	4.45	9.72	1.48	4.86	6.01
	40.0	40.0	3.6	3.85	4.91	10.45	1.46	5.22	6.53
	40.0	40.0	4.0	4.20	5.35	11.07	1.44	5.54	7.01
49.5 X 49.5	50	50	2.9	4.07	5.19	18.37	1.88	7.42	8.93
	50	50	3.6	4.93	6.28	21.42	1.85	8.66	10.60
	50	50	4.5	5.95	7.58	24.64	1.80	9.96	12.47
60.0 X 60.0	60.0	60.0	2.6	4.55	5.8	31.33	2.33	10.44	13.35
	60.0	60.0	3.6	6.11	7.79	40.37	2.28	13.46	16.22
	60.0	60.0	4.5	7.43	9.47	47.20	2.23	15.73	19.32
72.0 X 72.0	72.0	72.0	3.2	6.71	8.54	66.32	2.79	18.42	21.80
	72.0	72.0	4.0	8.22	10.47	79.03	2.75	21.95	26.32
	72.0	72.0	4.8	9.66	12.31	90.31	2.71	25.09	30.49
80.0 X 80.0	80.0	80.0	3.2	7.51	9.57	92.71	3.11	27.29	27.92
	80.0	80.0	4.0	9.22	11.75	111.05	3.07	27.76	33.07
	80.0	80.0	4.8	11.03	13.85	127.58	3.04	31.90	38.45
91.5 X 91.5	91.5	91.5	3.6	9.67	12.32	156.49	3.56	34.21	40.24
	91.5	91.5	4.5	11.88	15.14	187.57	3.52	41.00	48.79
	91.5	91.5	5.4	14.01	17.85	215.68	3.48	47.14	56.77
100.0 X 100.0	100.0	100.0	4.0	11.73	14.95	226.35	3.89	45.27	53.30
	100.0	100.0	5.0	14.41	18.36	271.10	3.84	54.22	64.59
	100.0	100.0	6.0	16.98	21.63	311.47	3.79	62.69	75.10
113.5 X 113.5	113.5	113.5	4.5	14.99	19.10	372.88	4.42	65.71	77.33
	113.5	113.5	4.8	15.92	20.28	393.31	4.40	69.30	81.81
	113.5	113.5	5.4	17.74	22.60	432.58	4.38	76.23	90.55
	113.5	113.5	6.0	19.53	24.87	469.81	4.35	82.79	98.96
132.0 X 132.0	132.0	132.0	4.8	18.71	23.83	634.39	5.16	96.12	112.69
	132.0	132.0	5.4	20.88	26.59	700.11	5.13	106.08	125.02
	132.0	132.0	6.0	23.01	29.31	762.98	5.10	115.60	136.98
150.0 X 150.0	150.0	150.0	5.0	22.26	28.36	982.12	5.89	130.95	152.98
	150.0	150.0	6.0	26.40	33.63	1145.91	5.84	152.79	179.88
180.0 X 180.0	180.0	180.0	4.0	21.90	27.90	1434.00	7.17	159.00	184.00
	180.0	180.0	5.0	27.20	34.60	1755.00	7.12	195.00	226.00
	180.0	180.0	6.0	32.05	40.83	2036.00	7.06	226.00	280.00
	180.0	180.0	8.0	42.50	54.10	2633.00	6.98	293.00	346.00

Apart from above mentioned sizes, we also manufacture customized and need based requirement.

## STEEL TUBES FOR STRUCTURAL PURPOSES

### RECTANGULAR HOLLOW SECTION (RHS)

CONFORMING TO **IS 4923**

RHS DXB	DEPTH D	WIDTH D	THICKNESS	WEIGHT	AREA OF SECTION	MOMENT OF INERTIA		RADIUS OF GYRATION		ELASTIC OF MODULUS		PLASTIC MODULUS ABOUT	
						X-X	Y-Y	X-X	Y-Y	X-X	Y-Y	X-X	Y-Y
						Cm <sup>4</sup>		Cm		Cm <sup>3</sup>		Cm <sup>3</sup>	
(MM)	(MM)	(MM)	(MM)	KG/M	Cm <sup>2</sup>	7	8	9	10	11	12	13	14
50.0 X 25.0	50	25	2.9	2.98	3.80	10.93	3.60	1.70	0.97	4.37	2.88	5.72	3.48
	50	25	3.2	3.24	4.13	11.63	3.80	1.68	0.95	4.65	3.04	6.14	3.73
60.0 X 40.0	60	40	2.9	4.12	5.25	24.74	13.11	2.17	1.58	8.25	6.56	10.25	7.73
66.0 X 33.0	66	33	2.9	4.07	5.19	27.33	9.12	2.29	1.33	8.28	5.53	10.59	6.49
	66	33	3.6	4.93	6.28	31.87	10.52	2.25	1.29	9.66	6.37	12.56	7.66
	66	33	4.5	5.95	7.58	36.64	11.93	2.20	1.25	11.10	7.23	14.77	8.94
75.0 X 25.0	75	25	2.9	4.12	5.25	29.82	7.72	2.38	1.21	8.52	5.14	11.07	6.04
	75	25	3.2	4.50	5.73	32.04	8.24	2.37	1.20	9.15	5.49	11.98	6.51
	75	25	4.0	5.45	6.95	37.23	9.42	2.31	1.16	10.64	6.28	14.20	7.66
80.0 X 40.0	80	40	2.9	5.03	6.41	50.87	17.11	2.82	1.63	12.72	8.56	16.07	9.88
	80	40	3.2	5.50	7.01	54.94	18.41	2.80	1.62	13.74	9.21	17.46	10.72
	80	40	4.0	6.71	8.55	64.79	21.49	2.75	1.59	16.20	10.74	20.91	12.77
96.0 X 48.0	96	48	3.2	6.71	8.54	98.61	33.28	3.40	1.97	20.54	13.87	25.85	15.91
	96	48	4.0	8.22	10.47	117.54	39.32	3.50	1.94	24.94	16.30	31.21	19.14
	96	48	4.8	9.66	12.31	134.35	44.55	3.30	1.90	27.99	18.56	36.13	22.08
100.0 X 50.0	100	50	3.2	7.01	8.93	112.29	37.95	3.60	2.06	22.46	15.18	28.20	17.37
	100	50	4.0	8.59	10.95	134.14	44.95	3.50	2.03	26.83	17.98	34.10	20.93
122.0 X 61.0	122	61	3.6	9.67	12.32	232.61	78.83	4.34	2.35	38.13	25.84	47.71	29.42
	122	61	4.5	11.88	15.14	278.39	93.78	4.29	2.49	45.73	30.75	57.85	35.56
	122	61	5.4	14.01	17.85	320.83	107.03	4.24	2.45	52.60	35.09	67.29	41.22
145.0 X 82.0	145	82	4.8	15.92	20.28	555.16	228.50	5.23	3.36	76.57	55.73	94.93	63.93
	145	82	5.4	17.74	22.60	610.85	250.59	5.20	3.33	84.26	61.12	105.07	70.66
172.0 X 92.0	172	92	4.8	18.71	23.83	917.13	346.91	6.20	3.82	106.64	75.41	132.08	85.61
	172	92	5.4	20.88	26.59	1012.47	381.74	6.17	3.79	117.73	82.99	146.55	94.86
200.0 X 100.0	200	100	5.0	22.26	28.36	1459.28	496.94	9.03	4.72	231.34	99.39	181.38	112.10
	200	100	6.0	26.40	33.63	1703.34	576.92	9.20	4.67	284.95	115.38	213.28	131.51
	200	100	8.0	34.38	43.79	2146.27	719.19	8.07	4.57	284.95	143.84	272.81	167.44
220.0 X 140.0	220	140	5.0	26.97	34.36	2313.39	1155.24	8.21	6.54	210.31	165.03	253.74	186.31
	220	140	6.3	33.81	43.07	2849.53	1417.84	8.13	6.48	259.05	202.55	315.09	231.02

Grade	Y.S. MPa Min	T.S. MPa Min	Elongation	
			25.4 MM & Under	Over 25.4 MM
YSt - 210	310	210	12	20
YSt - 240	410	240	10	15
YSt - 310	450	310	8	10



## RIGID STEEL CONDUIT & ACCESSORIES

### RIGID STEEL CONDUIT FOR ELECTRICAL INSTALLATIONS CONFORMING TO **IS 9537 (Part-2)**

Black stove enameled Steel Conduit Pipes and Galvanized Steel Conduit Pipes have high corrosion resistance and considered non-combustible.

These rigid steel conduit can be used indoors, outdoors, underground, concealed or exposed, for future wiring changes and provide excellent mechanical protection to conductors & cables.

DIMENSIONS			
Nominal Size of Conduit (MM)	Outside Diameter (MM)	Tolerance in Outside Diameter (MM)	Thickness (MM)
20	20	-0.3	1.4 to 1.8
25	25	-0.4	1.4 to 1.8
32	32	-0.4	1.4 to 1.8
40	40	-0.4	1.6 to 2.2
50	50	-0.5	1.6 to 2.2



## STEEL TUBES FOR CITY GAS DISTRIBUTION

---

### CONFORMING TO **IS: 1239 & IS: 13871**

Galvanized Iron (GI) pipes are used in above ground service lines up to consumer meter or meter control valve. GI Pipes are used for transportation of Piped Natural Gas in households.

Sizes : NB 15 mm, NB 20 mm, NB 25 mm

Supplied as :

- a) Galvanised Pipe
- b) Galvanised & Powder Coated pipes

Approved by :

- Indraprastha Gas Ltd.
- Adani Gas Ltd.
- Maharashtra Natural Gas Ltd
- GAIL Gas Ltd.
- Bhagyanagar Gas Ltd.
- Avantika Gas Ltd.
- Assam Gas Ltd.
- Godavari Gas Ltd.
- Green Gas Ltd.
- Gujarat Gas Limited



# **LED LIGHTS**

## LED LIGHT

**BR Green Industries Pvt Ltd.** (formerly Axiom Exim Pvt Ltd.), a manufacturing company of "VPL Group" under the brand name "VPL India LED" which deals in energy efficient lighting products for domestic, industrial and commercial use.

The corporate office and manufacturing unit is situated at Bawana industrial area in New Delhi.

Website : [www.brgreen.in](http://www.brgreen.in), Email : [info@brgreen.in](mailto:info@brgreen.in)



### LED FLOOD LIGHT

MODEL	AXE-FL-20	AXE-FL-30	AXE-FL-50	AXE-FL-100	AXE-FL-150	AXE-FL-200	AXE-FL-250
Power	20W	30W	50W	100W	150W	200W	250W
Lumens	2000	3000	5000	10000	15000	20000	25000
Efficacy	100 lm / W						
Input Specification	AC 100-300 VAC, 50Hz, PF > 0.9, Surge Protection 4 KV, THD < 10%						
CCT	3000 K - 6500 K						
CRI	> 80						
BIS Certified	IS 10322 (Part 5 / Sec 5) : 2013, R 81008443						

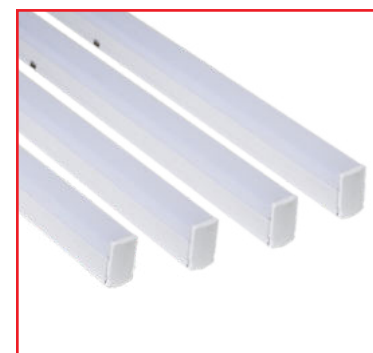


### LED STREET LIGHT

MODEL	AXE-SL-20	AXE-SL-30	AXE-SL-50	AXE-SL-100	AXE-SL-150	AXE-SL-200	AXE-SL-250
Power	20W	30W	50W	100W	150W	200W	250W
Lumens	2000	3000	5000	10000	15000	20000	25000
Efficacy	100 lm / W						
Input Specification	AC 100 - 300 VAC, 50Hz, PF > 0.9, Surge Protection 4 KV, THD < 10%						
CCT	3000 K - 6500 K						
CRI	> 80						
BIS Certified	IS 10322 (Part 5 / Sec 3) : 2012, R 81004502						

### LED TUBE LIGHT

MODEL	AXE-TL-5W	AXE-TL-10W	AXE-TL-20W	AXE-TL-24W	AXE-TL-30W	AXE-TL-40W
Power	5W	7W	9W	12W	15W	10W
Lumens	500	700	900	1200	1500	900
Efficacy	100 lm / W					
Input Specification	AC 100 - 300VAC, 50Hz, PF > 0.9, Surge Protection 3.5 KV, THD < 15%					
CCT	3000 K - 6500 K					
CRI	> 80					
BIS Certified	IS 10322 (Part 5 / Sec 1) : 2012, R 81005770					



### LED HIGH WATTAGE BULB

MODEL	AXE-LM-30W	AXE-LM-40W	AXE-LM-50W
Power	30W	40W	50W
Lumens	3000	4000	5000
Efficacy	100 lm / W		
Input Specification	AC 100 300 VAC, 50Hz, PF > 0.9, Surge Protection 4 KV, THD < 15%		
CCT	3000 K - 6500 K		
CRI	> 80		



## LED LIGHT



### LED O LAMP

MODEL	AXE-LM-30W	AXE-LM-40W
Power	7W	14W
Lumens	700	1400
Efficacy	100 lm / W	
Input Specification	AC 100 300 VAC, 50Hz, PF > 0.9, Surge Protection 3.5 KV, THD < 15%	
CCT	3000 K - 6500 K	
CRI	> 80	

### LED EMERGENCY BULB

MODEL	AC SPECIFICATION	DC SPECIFICATION	BATTERY SPECIFICATION
Power	9W	-	Charging Time 8-10 Hours
Lumens	900	350	Back-up Time 4 Hour Maximum
CCT	3000K - 6500K	3000K - 6500K	Battery Type Lithium
Input Specification	AC 100-300 VAC, 50Hz, PF > 0.9, Surge Protection 3.5 KV, THD < 15%		Rated Capacity of Battery 2200mAH
Efficacy	100 lm / W		Overcharging Protection Yes
CRI	> 80		



### LED CONCEAL DOWN LIGHT

MODEL	AXE-DL-3W	AXE-DL-7W	AXE-DL-6W	AXE-DL-6W	AXE-DL-6W	AXE-DL-6W
Power	3W	7W	6W	6W	6W	6W
Lumens	240	560	480	-	-	-
CTC	CW / WW / Red / Green / Blue / Pink	CW / WW / Red / Green / Blue / Pink	TRI Color CW / WW / / NW	TRI Color Red / Green / (Red + Green)	TRI Color Red / Blue / (Red + Blue)	TRI Color Blue / Green / (Blue + Green)
Input Specification	AC 100 - 300 VAC, 50Hz, PF > 0.9, Surge Protection 4 KV, THD < 15%					
Efficacy	80 lm / W					
CRI	> 80					

### LED PC Panel

MODEL	AXE-PC-8W	AXE-PC-15W	AXE-PC-22W	AXE-TPC-12W
Power	8W	15W	22W	12W
Lumens	800	1500	2200	1080
Efficacy	100 lm / W			90 lm / W
Input Secification	AC 100 300 VAC, 50Hz, PF > 0.9, Surge Protection 3.5 KV, THD < 15%			
CCT	3000 K - 6500 K			TRI Color CW / WW / NW
CRI	> 80			



### LED BULB

MODEL	AXE-LB-5	AXE-LB-7	AXE-LB-9	AXE-LB-12	AXE-LB-10	AXE-LB-15
Power	5W	7W	9W	12W	10W	15W
Lumens	500	700	900	1200	900	1500
Efficacy	100 lm / W			90 lm / W		
Input Specification	AC 100 300 VAC, 50Hz, PF > 0.9, Surge Protection 4 KV, THD < 15%					
CCT	3000 K - 6500 K			Tri Color CW-WW-NW		
CRI	> 80					
BIS Certified	IS 16102 (Part 1) : 2012, R-85001252					

EXPORTS



EXPORTS





[www.vishalpipes.com](http://www.vishalpipes.com)

**EXPORT SALES**

[vivek@vishalpipes.com](mailto:vivek@vishalpipes.com)

**INSTITUTIONAL & CORPORATE SALES**

[kavish@vishalpipes.com](mailto:kavish@vishalpipes.com)

**STEEL FABRICATION**

[vishal@vplgroup.com](mailto:vishal@vplgroup.com)

**GOVERNMENT SALES**

[govt.sales@vplgroup.com](mailto:govt.sales@vplgroup.com)

**DOMESTIC SALES**

[jai@vishalpipes.com](mailto:jai@vishalpipes.com)

**LED LIGHTS**

[sahil@brgreen.in](mailto:sahil@brgreen.in)

**VISHAL PIPES LTD.**

**CORPORATE OFFICE :**

32, Nishant Kunj, 1st Floor,  
Near Kohat Enclave Metro Station  
Pitampura, New Delhi - 110034 (India)  
Ph. : +91-11-46205620 (100 Lines)

**HEAD OFFICE :**

C-101, Dadu Dayal House  
R.D.C.Raj Nagar  
Ghaziabad – 201002, U.P. (India)  
Ph. : +91-120-4636100 (100 Lines)